

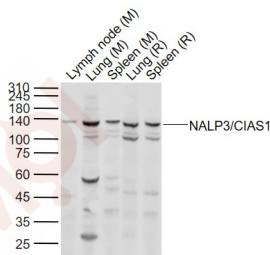
## Anti-NLRP3 Polyclonal Antibody 3

### Product Details

**Ig Type:** IgG  
**Reactivity:** Human, Mouse (predicted: Rat)  
**Molecular Weight:** Theoretical: 114 kDa. Actual: 120 kDa.  
**Purification:** Protein A purified

### Applications

**Sample:**  
 Lane 1: Lymph node (Mouse) Lysate at 40 µg  
 Lane 2: Lung (Mouse) Lysate at 40 µg  
 Lane 3: Spleen (Mouse) Lysate at 40 µg  
 Lane 4: Lung (Rat) Lysate at 40 µg  
 Lane 5: Spleen (Rat) Lysate at 40 µg  
**Verified Activity:**  
 Primary: Anti-NALP3/CIAS1 (TMAB-01245) at 1/1000 dilution  
 Secondary: IRDye800CW Goat Anti-Rabbit IgG at 1/20000 dilution  
 Predicted band size: 114-118 kDa  
 Observed band size: 120 kDa



**Application:** WB  
**Recommended:** WB: 1:500-2000

### Properties

**Stability & Storage:** Store at -20°C or -80°C for 12 months. Avoid repeated freeze-thaw cycles.  
**Shipping:** Shipping with blue ice.

### Antigen Details

**Immunogen:** KLH conjugated synthetic peptide: mouse NALP3/CIAS1  
**Antigen Species:** Mouse  
**Gene ID:** 216799  
**Uniprot ID:** Q8R4B8  
**Synonyms:** Mast cell maturation-associated-inducible protein 1; LRR and PYD domains-containing protein 3; Cryopyrin; Cold autoinflammatory syndrome 1 protein homolog; Cias1; NACHT, LRR and PYD domains-containing protein 3; Pypaf1; Nlrp3; Mmig1; PYRIN-containing APAF1-like protein 1; Nalp3

Biology Area: TNF,Inflammatory mediators,Macrophage / Inflamm.,NFkB Pathway

---

### Research Background

May function as an inducer of apoptosis. Interacts selectively with ASC and this complex may function as an upstream activator of NF-kappa-B signaling. Inhibits TNF-alpha induced activation and nuclear translocation of RELA/NF-KB p65. Also inhibits transcriptional activity of RELA. Activates caspase-1 in response to a number of triggers including bacterial or viral infection which leads to processing and release of IL1B and IL18.

Subcellular Location : Cytoplasm.

**Inhibitor · Natural Compounds · Compound Libraries · Recombinant Proteins**

This product is for Research Use Only· Not for Human or Veterinary or Therapeutic Use

Tel:781-999-4286 E\_mail:info@targetmol.com Address:34 Washington Street,Wellesley Hills,MA 02481