

## Anti-NLRP3 Polyclonal Antibody

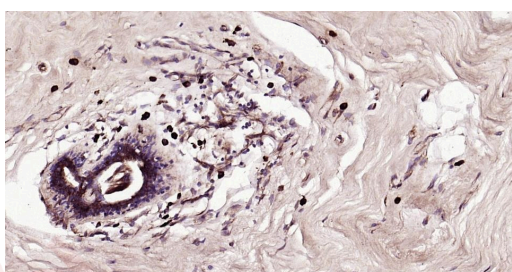
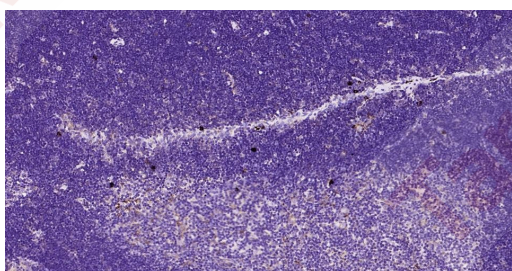
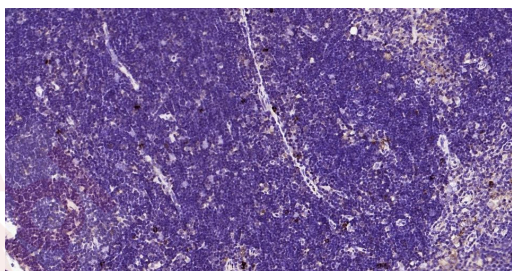
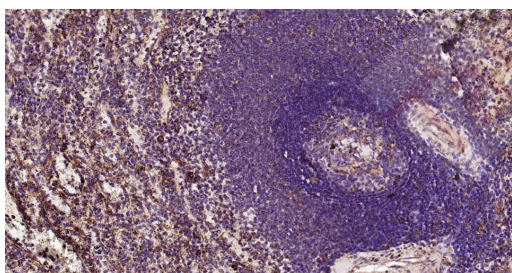
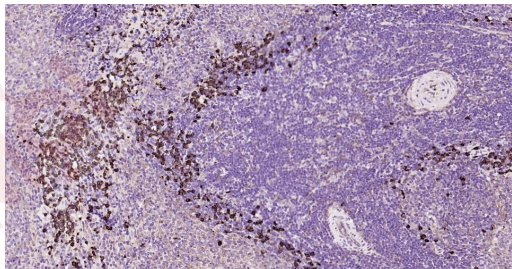
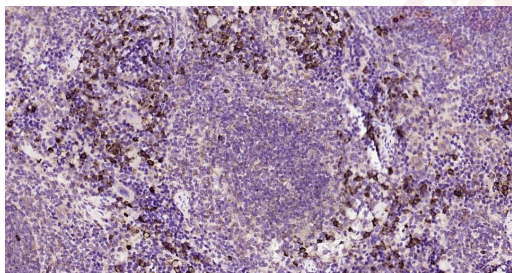
### Product Details

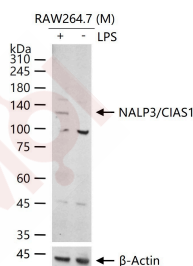
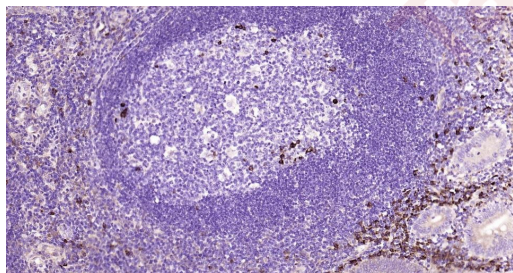
Ig Type:	IgG
Reactivity:	Human,Mouse,Rat
Molecular Weight:	Theoretical: 114 kDa. Actual: 120 kDa.
Purification:	Protein A purified

### Applications

#### Verified Activity:

1. Paraformaldehyde-fixed, paraffin embedded Mouse Spleen; Antigen retrieval by boiling in sodium citrate buffer (pH6.0) for 15 min; Antibody incubation with NALP3/CIAS1 Polyclonal Antibody, Unconjugated (TMAB-01243) at 1:200 overnight at 4°C, followed by conjugation to the secondary antibody and DAB staining.
2. Paraformaldehyde-fixed, paraffin embedded Rat Spleen; Antigen retrieval by boiling in sodium citrate buffer (pH6.0) for 15 min; Antibody incubation with NALP3/CIAS1 Polyclonal Antibody, Unconjugated (TMAB-01243) at 1:200 overnight at 4°C, followed by conjugation to the secondary antibody and DAB staining.
3. Paraformaldehyde-fixed, paraffin embedded Human Spleen; Antigen retrieval by boiling in sodium citrate buffer (pH6.0) for 15 min; Antibody incubation with NALP3/CIAS1 Polyclonal Antibody, Unconjugated (TMAB-01243) at 1:200 overnight at 4°C, followed by conjugation to the secondary antibody and DAB staining.
4. Paraformaldehyde-fixed, paraffin embedded Mouse Thymus; Antigen retrieval by boiling in sodium citrate buffer (pH6.0) for 15 min; Antibody incubation with NALP3/CIAS1 Polyclonal Antibody, Unconjugated (TMAB-01243) at 1:200 overnight at 4°C, followed by conjugation to the secondary antibody and DAB staining.
5. Paraformaldehyde-fixed, paraffin embedded Rat Thymus; Antigen retrieval by boiling in sodium citrate buffer (pH6.0) for 15 min; Antibody incubation with NALP3/CIAS1 Polyclonal Antibody, Unconjugated (TMAB-01243) at 1:200 overnight at 4°C, followed by conjugation to the secondary antibody and DAB staining.
6. Paraformaldehyde-fixed, paraffin embedded Human Chronic inflammatory mastitis; Antigen retrieval by boiling in sodium citrate buffer (pH6.0) for 15 min; Antibody incubation with NALP3/CIAS1 Polyclonal Antibody, Unconjugated (TMAB-01243) at 1:200 overnight at 4°C, followed by conjugation to the secondary antibody and DAB staining.
7. Paraformaldehyde-fixed, paraffin embedded Human Purulent appendicitis; Antigen retrieval by boiling in sodium citrate buffer (pH6.0) for 15 min; Antibody incubation with NALP3/CIAS1 Polyclonal Antibody, Unconjugated (TMAB-01243) at 1:200 overnight at 4°C, followed by conjugation to the secondary antibody and DAB staining.
8. RAW264.7 (M) cells were treated with or without LPS (10 µg/ml) for 8h, 25 µg total protein per Lane of cell lysates probed with NALP3/CIAS1 polyclonal antibody, unconjugated (TMAB-01243) at 1:1000 dilution and 4°C overnight incubation. Followed by conjugated secondary antibody incubation at RT for 60 min.





Application: IF,IHC-Fr,IHC-P,WB

Recommended WB: 1:500-2000; IHC-P: 1:100-500; IHC-Fr: 1:100-500; IF: 1:100-500

### Properties

Stability & Storage: Store at -20°C or -80°C for 12 months. Avoid repeated freeze-thaw cycles.

Shipping: Shipping with blue ice.

### Antigen Details

Immunogen: KLH conjugated synthetic peptide: human Cryopyrin

Antigen Species: Human

Gene ID: 114548

Uniprot ID: Q96P20

Synonyms: LRR and PYD domains-containing protein 3;NALP3;PYRIN-containing APAF1-like protein 1; NACHT, LRR and PYD domains-containing protein 3;CIAS1;Cryopyrin;PYPAF1;Caterpillar protein 1.1 (CLR1.1);Cold-induced autoinflammatory syndrome 1 protein;Angiotensin/vasopressin receptor AII/AVP-like;NLRP3;C1orf7

Biology Area: TNF,Inflammatory mediators,Macrophage / Inflamm.,NFkB Pathway

### Research Background

May function as an inducer of apoptosis. Interacts selectively with ASC and this complex may function as an upstream activator of NF-kappa-B signaling. Inhibits TNF-alpha induced activation and nuclear translocation of RELA/NF-KB p65. Also inhibits transcriptional activity of RELA. Activates caspase-1 in response to a number of triggers including bacterial or viral infection which leads to processing and release of IL1B and IL18. Subcellular Location : Cytoplasm.

**Inhibitor · Natural Compounds · Compound Libraries · Recombinant Proteins**

This product is for Research Use Only· Not for Human or Veterinary or Therapeutic Use

Tel:781-999-4286

E\_mail:info@targetmol.com

Address:34 Washington Street,Wellesley Hills,MA 02481