

Anti-NKX2-1 Polyclonal Antibody

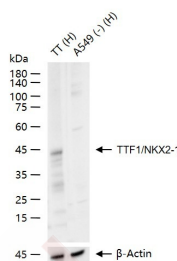
Product Details

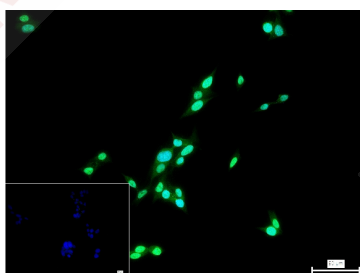
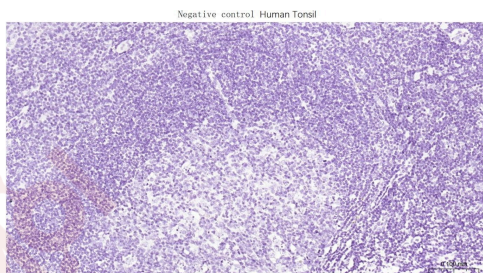
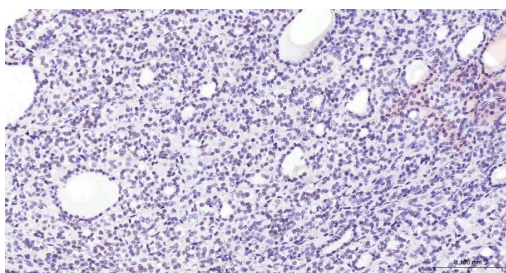
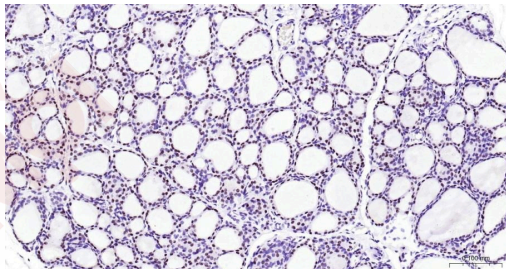
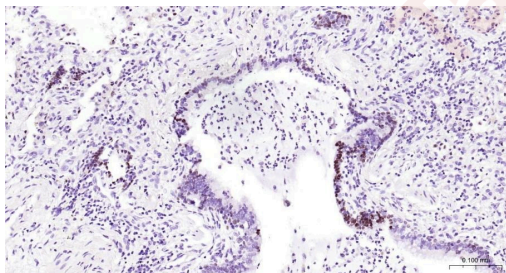
Ig Type:	IgG
Reactivity:	Human,Mouse,Rat
Molecular Weight:	Theoretical: 38 kDa. Actual: 40 kDa.
Purification:	Protein A purified

Applications

Verified Activity:

- 25 µg total protein per Lane of various lysates probed with TTF1/NKX2-1 polyclonal antibody, unconjugated (TMAB-01242) at 1:1000 dilution and 4°C overnight incubation. Followed by conjugated secondary antibody incubation at RT for 60 min.
- Paraformaldehyde-fixed, paraffin embedded Human Lung cancer; Antigen retrieval by boiling in sodium citrate buffer (pH6.0) for 15 min; Antibody incubation with TTF1/NKX2-1 Polyclonal Antibody, Unconjugated (TMAB-01242) at 1:200 overnight at 4°C, followed by conjugation to the secondary antibody and DAB staining.
- Paraformaldehyde-fixed, paraffin embedded Rat Thyroid Gland; Antigen retrieval by boiling in sodium citrate buffer (pH6.0) for 15 min; Antibody incubation with TTF1/NKX2-1 Polyclonal Antibody, Unconjugated (TMAB-01242) at 1:200 overnight at 4°C, followed by conjugation to the secondary antibody and DAB staining.
- Paraformaldehyde-fixed, paraffin embedded Human Thyroid Gland; Antigen retrieval by boiling in sodium citrate buffer (pH6.0) for 15 min; Antibody incubation with TTF1/NKX2-1 Polyclonal Antibody, Unconjugated (TMAB-01242) at 1:200 overnight at 4°C, followed by conjugation to the secondary antibody and DAB staining.
- (Negative control) Paraformaldehyde-fixed, paraffin embedded Human Tonsil; Antigen retrieval by boiling in sodium citrate buffer (pH6.0) for 15 min; Antibody incubation with TTF1/NKX2-1 Polyclonal Antibody, Unconjugated (TMAB-01242) at 1:200 overnight at 4°C, followed by conjugation to the secondary antibody and DAB staining.
- 4% Paraformaldehyde-fixed TT (H) cell; Triton X-100 at RT for 20 min; Antibody incubation with (TTF1/NKX2-1) polyclonal Antibody, unconjugated (TMAB-01242) 1:100, 90 min at 37°C; followed by conjugated Goat Anti-Rabbit IgG antibody (green) at 37°C for 90 min, DAPI (blue) was used to stain the cell nucleus. PBS instead of the primary antibody was used as the blank control.





Application: FCM, ICC/IF, IF, IHC-Fr, IHC-P, WB

Recommended FCM=1 µg/Test; ICC/IF=1:50-200; IF=1:100-500; IHC-Fr=1:100-500; IHC-P=1:100-500; WB=1:500-2000

Properties

Stability & Storage: Store at -20°C or -80°C for 12 months. Avoid repeated freeze-thaw cycles.

Shipping: Shipping with blue ice.

Antigen Details

Immunogen:	KLH conjugated synthetic peptide: human TTF-1
Antigen Species:	Human
Gene ID:	7080
Uniprot ID:	P43699
Synonyms:	Thyroid nuclear factor 1;TTF-1;NKX2A;TTF1;TITF1;Thyroid transcription factor 1;Thyroid-specific enhancer-binding protein;Homeobox protein Nkx-2.1;T/EBP;Homeobox protein NK-2 homolog A

Research Background

This gene encodes a protein initially identified as a thyroid-specific transcription factor. The encoded protein binds to the thyroglobulin promoter and regulates the expression of thyroid-specific genes but has also been shown to regulate the expression of genes involved in morphogenesis. Mutations and deletions in this gene are associated with benign hereditary chorea, choreoathetosis, congenital hypothyroidism, and neonatal respiratory distress, and may be associated with thyroid cancer. Multiple transcript variants encoding different isoforms have been found for this gene. This gene shares the symbol/alias 'TFF1' with another gene, transcription termination factor 1, which plays a role in ribosomal gene transcription. [provided by RefSeq, Apr 2011]

Inhibitor · Natural Compounds · Compound Libraries · Recombinant Proteins

This product is for Research Use Only · Not for Human or Veterinary or Therapeutic Use

Tel:781-999-4286 E_mail:info@targetmol.com Address:34 Washington Street,Wellesley Hills,MA 02481