

Anti-NKG2D/CD314 Polyclonal Antibody

Product Details

| | |
|-------------------|--------------------------------------|
| Ig Type: | IgG |
| Reactivity: | Human, Mouse (predicted: Rat) |
| Molecular Weight: | Theoretical: 25 kDa. Actual: 26 kDa. |
| Purification: | Protein A purified |

Applications

1. Blank control (blue line): Mouse thymus cells (blue).
 Primary Antibody (green line): Rabbit Anti-NKG2D antibody (TMAB-01240)
 Dilution: 1 µg/10⁶ cells;
 Isotype Control Antibody (orange line): Rabbit IgG.
 Secondary Antibody (white blue line): Goat anti-rabbit IgG-PE
 Dilution: 1 µg/test.

Protocol

The cells were fixed with 70% methanol (Overnight at 4°C). Cells stained with Primary Antibody for 30 min at room temperature. The cells were then incubated in 1 X PBS/2% BSA/10% goat serum to block non-specific protein-protein interactions followed by the antibody for 15 min at room temperature. The secondary antibody used for 40 min at room temperature.

Verified Activity:

2. Blank control: SW480. Primary Antibody (green line): Rabbit Anti-NKG2D antibody (TMAB-01240)

Dilution: 2 µg/Test;

Secondary Antibody: Goat anti-rabbit IgG-FITC

Dilution: 0.5 µg/Test.

Protocol

The cells were incubated in 5% BSA to block non-specific protein-protein interactions for 30 min at room temperature. Cells stained with Primary Antibody for 30 min at room temperature. The secondary antibody used for 40 min at room temperature.

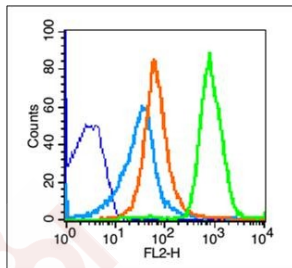
3. Sample: Lung (Mouse) Lysate at 40 µg

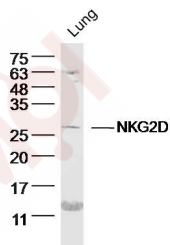
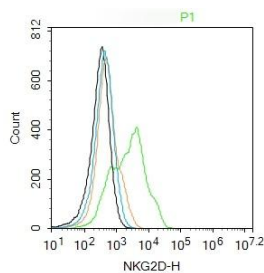
Primary: Anti-NKG2D (TMAB-01240) at 1/300 dilution

Secondary: IRDye800CW Goat Anti-Rabbit IgG at 1/20000 dilution

Predicted band size: 25 kDa

Observed band size: 26 kDa





Application: FCM,WB

Recommended WB: 1:500-2000; FCM: 2µg/Test

Properties

Stability & Storage: Store at -20°C or -80°C for 12 months. Avoid repeated freeze-thaw cycles.

Shipping: Shipping with blue ice.

Antigen Details

Immunogen: KLH conjugated synthetic peptide: rat NKG2D

Antigen Species: Rat

Gene ID: 24934

Uniprot ID: O70215

Synonyms: NK lectin-like receptor;NKG2 D type II integral membrane protein;CD 314;D12S2489E;Killer cell lectin-like receptor subfamily K;Killer cell lectin like receptor subfamily K member 1;Klrk1; CD314;NKG2-D type II integral membrane protein;natural killer cell group 2D;NKG2 D activating NK receptor;CD314 antigen;NKG2-D-activating NK receptor;KLR;NKLLR;NKG2-D isoform b;NKR P2;NKG2D;NK cell receptor D;Nkrp2

Research Background

This locus represents naturally occurring read-through transcription between the neighboring KLRC4 (killer cell lectin-like receptor subfamily C, member 4) and KLRK1 (killer cell lectin-like receptor subfamily K, member 1) genes on chromosome 12. The read-through transcript includes an alternate 5' exon and lacks a significant portion of the KLRC4 coding sequence, including the start codon, and it thus encodes the KLRK1 protein. [provided by RefSeq, Dec 2010]

Inhibitor · Natural Compounds · Compound Libraries · Recombinant Proteins

This product is for Research Use Only · Not for Human or Veterinary or Therapeutic Use

Tel:781-999-4286 E_mail:info@targetmol.com Address:34 Washington Street,Wellesley Hills,MA 02481