

## Anti-NF- $\kappa$ B p65 Polyclonal Antibody

### Product Details

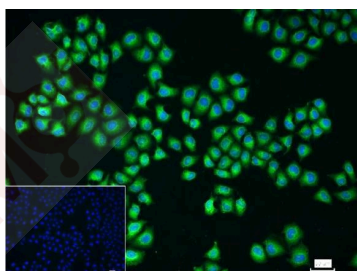
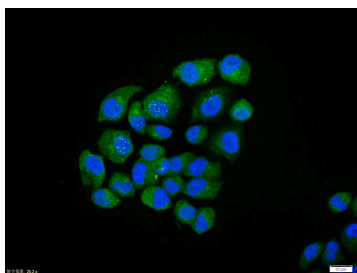
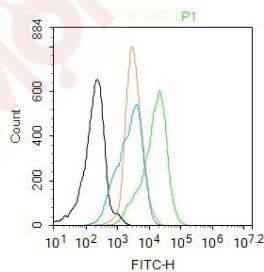
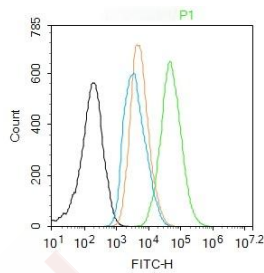
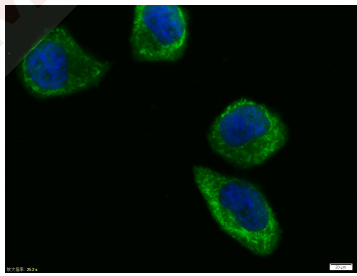
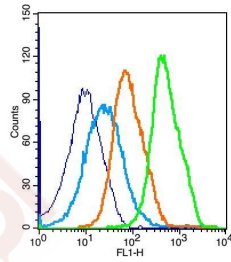
Ig Type:	IgG
Reactivity:	Human, Mouse (predicted: Rat, Chicken, Dog, Pig, Cow, Horse, Rabbit, Zebrafish, Sheep)
Molecular Weight:	Theoretical: 61 kDa.
Purification:	Protein A purified

### Applications

1. Blank control: mouse splenocytes (blue)  
Isotype Control Antibody: Rabbit IgG (orange);  
Secondary Antibody: Goat anti-rabbit IgG-FITC (white blue),  
Dilution: 1:100 in 1 X PBS containing 0.5% BSA;  
Primary Antibody Dilution: 1  $\mu$ L in 100  $\mu$ L 1X PBS containing 0.5% BSA (green).
2. Tissue/cell: Hela cell; 4% Paraformaldehyde-fixed; Triton X-100 at room temperature for 20 min; Blocking buffer (normal goat serum) at 37°C for 20 min; Antibody incubation with (NF $\kappa$ B p65) polyclonal Antibody, Unconjugated (TMAB-01229) 1:100, 90 minutes at 37°C; followed by a FITC conjugated Goat Anti-Rabbit IgG antibody at 37°C for 90 minutes, DAPI (blue) was used to stain the cell nucleus.
3. Blank control: A431. Primary Antibody (green line): Rabbit Anti-NF $\kappa$ B p65 antibody  
Dilution: 1  $\mu$ g/10<sup>6</sup> cells;  
Isotype Control Antibody (orange line): Rabbit IgG.  
Secondary Antibody: Goat anti-rabbit IgG-FITC  
Dilution: 1  $\mu$ g/test.  
Protocol  
The cells were fixed with 4% PFA (10 min at room temperature) and then permeabilized with 90% ice-cold methanol for 20 min at -20°C. The cells were then incubated in 5% BSA to block non-specific protein-protein interactions for 30 min at room temperature. Cells stained with Primary Antibody for 30 min at room temperature. The secondary antibody used for 40 min at room temperature.
4. Blank control: HL-60. Primary Antibody (green line): Rabbit Anti-NF $\kappa$ B p65 antibody (TMAB-01229)  
Dilution: 1  $\mu$ g/10<sup>6</sup> cells;  
Isotype Control Antibody (orange line): Rabbit IgG.  
Secondary Antibody: Goat anti-rabbit IgG-FITC  
Dilution: 1  $\mu$ g/test.  
Protocol  
The cells were fixed with 4% PFA (10 min at room temperature) and then permeabilized with 90% ice-cold methanol for 20 min at -20°C. The cells were then incubated in 5% BSA to block non-specific protein-protein interactions for 30 min at room temperature. Cells stained with Primary Antibody for 30 min at room temperature. The secondary antibody used for 40 min at room temperature.
5. Tissue/cell: MCF7 cell; 4% Paraformaldehyde-fixed; Triton X-100 at room temperature for 20 min; Blocking buffer (normal goat serum) at 37°C for 20 min; Antibody incubation with (NF $\kappa$ B p65) polyclonal Antibody, Unconjugated (TMAB-01229) 1:100, 90 minutes at 37°C; followed by a FITC conjugated Goat Anti-Rabbit IgG antibody at 37°C for 90 minutes, DAPI (blue) was used to stain the cell nucleus.

Verified Activity:

6. 4% Paraformaldehyde-fixed Hela (H) cell; Triton X-100 at RT for 20 min; Antibody incubation with (NFKB p65) polyclonal Antibody, unconjugated (TMAB-01229) 1:100, 90 min at 37°C; followed by conjugated Goat Anti-Rabbit IgG antibody (green ) at 37°C for 90 min, DAPI (blue) was used to stain the cell nucleus. PBS instead of the primary antibody was used as the blank control.



## A DRUG SCREENING EXPERT

---

Application: FCM,ICC/IF  
Recommended ICC/IF: 1:50-200; FCM: 1µg/Test

---

### Properties

Stability & Storage: Store at -20°C or -80°C for 12 months. Avoid repeated freeze-thaw cycles.  
Shipping: Shipping with blue ice.

---

### Antigen Details

Immunogen: KLH conjugated synthetic peptide: human NFkBp65  
Antigen Species: Human  
Gene ID: 5970  
Uniprot ID: Q04206  
Synonyms: NFkB3;p65;v-rel avian reticuloendotheliosis viral oncogene homolog A  
Biology Area: RelA (p65),NFkB pathway,Inflammatory mediators,RelA (p65),NFkB pathway,Obesity,Host Immune Response,Host Virus Interaction,Alzheimer's disease,NFkB Pathway

---

### Research Background

NF-kappa-B is a ubiquitous transcription factor involved in several biological processes. It is held in the cytoplasm in an inactive state by specific inhibitors. Upon degradation of the inhibitor, NF-kappa-B moves to the nucleus and activates transcription of specific genes. NF-kappa-B is composed of NFkB1 or NFkB2 bound to either REL, RELA, or RELB. The most abundant form of NF-kappa-B is NFkB1 complexed with the product of this gene, RELA. Four transcript variants encoding different isoforms have been found for this gene. [provided by RefSeq, Sep 2011].

**Inhibitor · Natural Compounds · Compound Libraries · Recombinant Proteins**

This product is for Research Use Only · Not for Human or Veterinary or Therapeutic Use

Tel:781-999-4286 E\_mail:info@targetmol.com Address:34 Washington Street,Wellesley Hills,MA 02481