

## Anti-NFE2L2 Polyclonal Antibody

### Product Details

Ig Type:	IgG
Reactivity:	Human,Mouse,Rat
Molecular Weight:	Theoretical: 68 kDa. Actual: 90-110 kDa.
Purification:	Protein A purified

### Applications

#### Verified Activity:

1. Paraformaldehyde-fixed, paraffin embedded Mouse Lung; Antigen retrieval by boiling in sodium citrate buffer (pH6.0) for 15 min; Antibody incubation with Nrf2 Polyclonal Antibody, Unconjugated (TMAB-01226) at 1:200 overnight at 4°C, followed by conjugation to the SP Kit (Rabbit) and DAB staining.
2. Paraformaldehyde-fixed, paraffin embedded Mouse Testicles; Antigen retrieval by boiling in sodium citrate buffer (pH6.0) for 15 min; Antibody incubation with Nrf2 Polyclonal Antibody, Unconjugated (TMAB-01226) at 1:200 overnight at 4°C, followed by conjugation to the SP Kit (Rabbit) and DAB staining.
3. Paraformaldehyde-fixed, paraffin embedded Human Testicles; Antigen retrieval by boiling in sodium citrate buffer (pH6.0) for 15 min; Antibody incubation with Nrf2 Polyclonal Antibody, Unconjugated (TMAB-01226) at 1:200 overnight at 4°C, followed by conjugation to the SP Kit (Rabbit) and DAB staining.
4. Paraformaldehyde-fixed, paraffin embedded Mouse Cerebrum; Antigen retrieval by boiling in sodium citrate buffer (pH6.0) for 15 min; Antibody incubation with Nrf2 Polyclonal Antibody, Unconjugated (TMAB-01226) at 1:200 overnight at 4°C, followed by conjugation to the SP Kit (Rabbit) and DAB staining.
5. Paraformaldehyde-fixed, paraffin embedded Mouse Heart; Antigen retrieval by boiling in sodium citrate buffer (pH6.0) for 15 min; Antibody incubation with Nrf2 Polyclonal Antibody, Unconjugated (TMAB-01226) at 1:200 overnight at 4°C, followed by conjugation to the SP Kit (Rabbit) and DAB staining.
6. Paraformaldehyde-fixed, paraffin embedded Human Liver Cancer; Antigen retrieval by boiling in sodium citrate buffer (pH6.0) for 15 min; Antibody incubation with Nrf2 Polyclonal Antibody, Unconjugated (TMAB-01226) at 1:200 overnight at 4°C, followed by conjugation to the SP Kit (Rabbit) and DAB staining.
7. Paraformaldehyde-fixed, paraffin embedded Human Cervical Cancer; Antigen retrieval by boiling in sodium citrate buffer (pH6.0) for 15 min; Antibody incubation with Nrf2 Polyclonal Antibody, Unconjugated (TMAB-01226) at 1:200 overnight at 4°C, followed by conjugation to the SP Kit (Rabbit) and DAB staining.
8. Paraformaldehyde-fixed, paraffin embedded Human Skin Cancer; Antigen retrieval by boiling in sodium citrate buffer (pH6.0) for 15 min; Antibody incubation with Nrf2 Polyclonal Antibody, Unconjugated (TMAB-01226) at 1:200 overnight at 4°C, followed by conjugation to the SP Kit (Rabbit) and DAB staining.
9. Paraformaldehyde-fixed, paraffin embedded Human Tonsil; Antigen retrieval by boiling in sodium citrate buffer (pH6.0) for 15 min; Antibody incubation with Nrf2 Polyclonal Antibody, Unconjugated (TMAB-01226) at 1:200 overnight at 4°C, followed by conjugation to the SP Kit (Rabbit) and DAB staining.
10. Paraformaldehyde-fixed, paraffin embedded Human Breast Cancer; Antigen retrieval by boiling in sodium citrate buffer (pH6.0) for 15 min; Antibody incubation with Nrf2 Polyclonal

Antibody, Unconjugated (TMAB-01226) at 1:200 overnight at 4°C, followed by conjugation to the SP Kit (Rabbit) and DAB staining.

11. Paraformaldehyde-fixed, paraffin embedded Human Pancreatic Cancer; Antigen retrieval by boiling in sodium citrate buffer (pH6.0) for 15 min; Antibody incubation with Nrf2 Polyclonal Antibody, Unconjugated (TMAB-01226) at 1:200 overnight at 4°C, followed by conjugation to the SP Kit (Rabbit) and DAB staining.

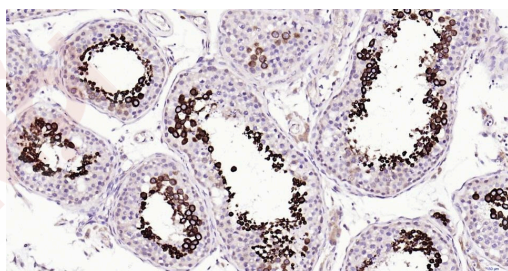
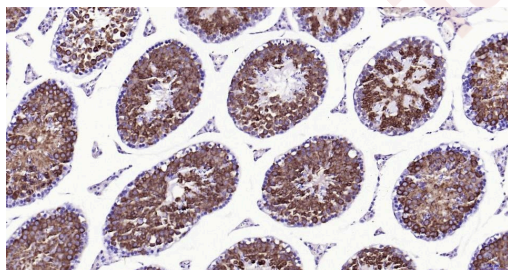
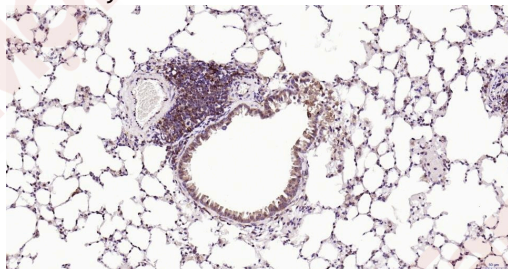
12. HeLa (H) cells were treated with or without MG-132 (10 µM) for 10h, 25 µg total protein per Lane of cell lysates probed with Nrf2 monoclonal antibody, unconjugated at 1:1000 dilution and 4°C overnight incubation. Followed by conjugated secondary antibody incubation at RT for 60 min.

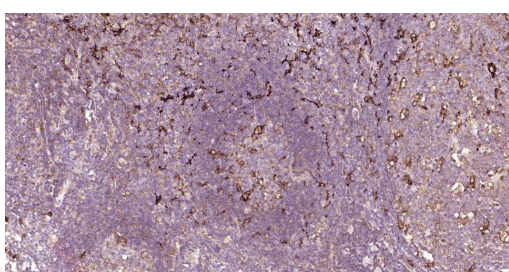
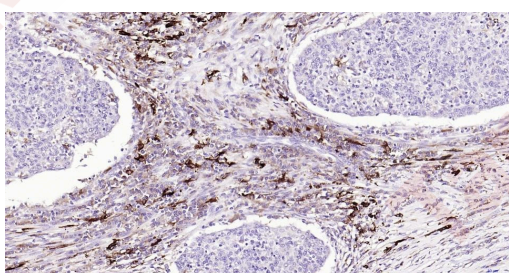
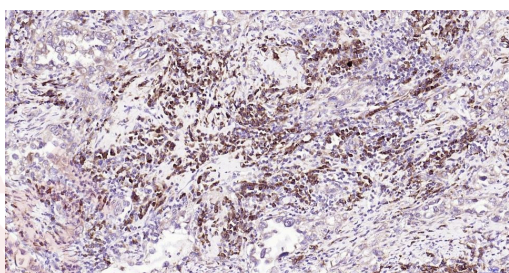
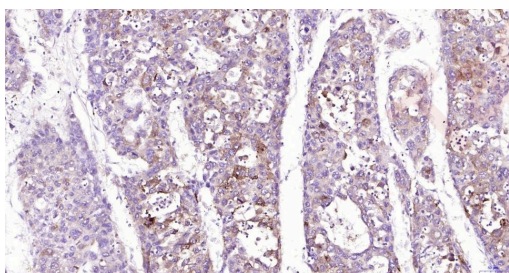
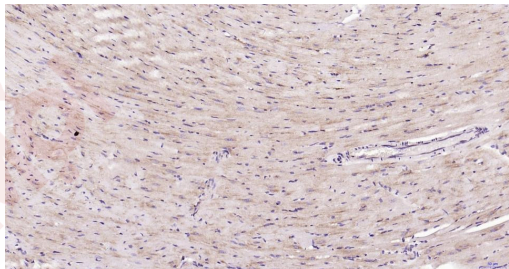
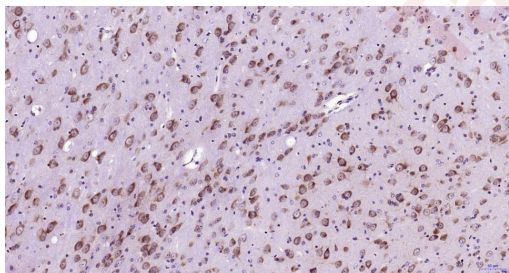
13. Paraformaldehyde-fixed, paraffin embedded Rat Liver; Antigen retrieval by boiling in sodium citrate buffer (pH6.0) for 15 min; Antibody incubation with Nrf2 Polyclonal Antibody, Unconjugated (TMAB-01226) at 1:200 overnight at 4°C, followed by conjugation to the secondary antibody and DAB staining.

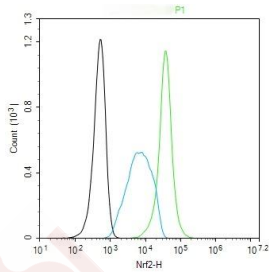
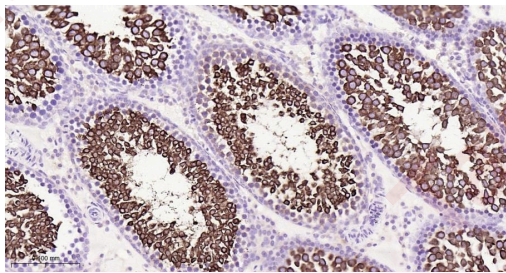
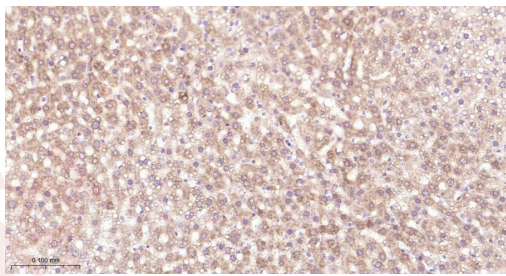
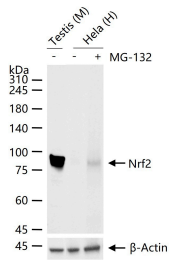
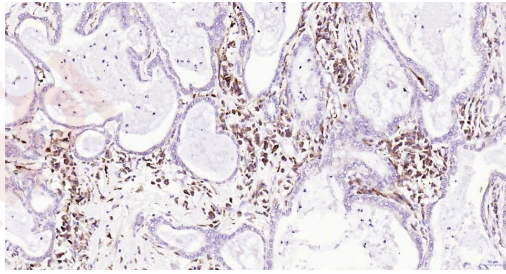
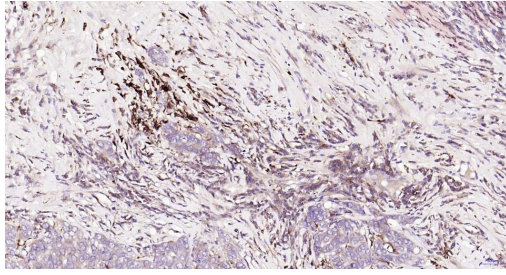
14. Paraformaldehyde-fixed, paraffin embedded Rat Testicles; Antigen retrieval by boiling in sodium citrate buffer (pH6.0) for 15 min; Antibody incubation with Nrf2 Polyclonal Antibody, Unconjugated (TMAB-01226) at 1:200 overnight at 4°C, followed by conjugation to the secondary antibody and DAB staining.

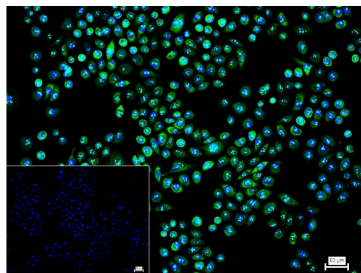
15. The HeLa (treated with MG-132 (10 µM, 10h)) (H) cells were fixed with 4% PFA (10 min at room temperature) and then permeabilized with 90% ice-cold methanol for 20 min at -20°C, the cells then were incubated in 5% BSA to block non-specific protein-protein interactions (30 min at room temperature). Primary Antibody (green): Rabbit Anti-Nrf2 antibody (TMAB-01226): 1 µg/10<sup>6</sup> cells; Secondary Antibody (white blue): Goat anti-Rabbit IgG-BF488: 1 µg/test. Blank control (black): PBS.

16. 4% Paraformaldehyde-fixed HeLa (treated with MG-132 (10 µM, 10h))(H) cell; Triton X-100 at RT for 20 min; Antibody incubation with (Nrf2) polyclonal Antibody, unconjugated (TMAB-01226) 1:100, 90 min at 37°C; followed by conjugated Goat Anti-Rabbit IgG antibody (green) at 37°C for 90 min, DAPI (blue) was used to stain the cell nucleus. PBS instead of the primary antibody was used as the blank control.









Application: FCM,ICC/IF,IF,IHC-Fr,IHC-P,WB

Recommended FCM=1 µg/Test; ICC/IF=1:100-500; IF=1:200-1000; IHC-Fr=1:200-1000; IHC-P=1:200-1000; WB=1:1000-5000

### Properties

Stability & Storage: Store at -20°C or -80°C for 12 months. Avoid repeated freeze-thaw cycles.

Shipping: Shipping with blue ice.

### Antigen Details

Immunogen: KLH conjugated synthetic peptide: human Nrf2

Antigen Species: Human

Gene ID: 4780

Uniprot ID: Q16236

Synonyms: NFE2-related factor 2;Nuclear factor erythroid 2-related factor 2;NRF2;NFE2L2;Nrf-2;Nuclear factor, erythroid derived 2, like 2;NF-E2-related factor 2

Biology Area: Cardiac metabolism,Oxidative Stress,ChIP antibodies,Other factors,Mitochondrial transcription, Mitochondrial Biogenesis,Oxidative stress

### Research Background

Nuclear factor erythroid 2-related factor 2 (Nrf2) is a transcription factor which regulates the expression of many detoxification and antioxidant enzymes. Nrf2 can potentially play a significant role in adaptive responses to oxidative stress. Nrf2 belongs to the Cap N Collar (CNC-bZIP) subfamily of basic /leucine zipper (bZIP) transcription factors.

**Inhibitor · Natural Compounds · Compound Libraries · Recombinant Proteins**

This product is for Research Use Only · Not for Human or Veterinary or Therapeutic Use

Tel:781-999-4286 E\_mail:info@targetmol.com Address:34 Washington Street,Wellesley Hills,MA 02481