

## Anti-NET1 Polyclonal Antibody

### Product Details

Ig Type:	IgG
Reactivity:	Human,Mouse,Rat (predicted:Chicken,Dog,Pig,Cow,Horse,Rabbit,Sheep)
Molecular Weight:	Theoretical: 65 kDa. Actual: 65 kDa.
Purification:	Protein A purified

### Applications

1. Tissue/cell: mouse brain tissue; 4% Paraformaldehyde-fixed and paraffin-embedded; Antigen retrieval: citrate buffer (0.01M, pH6.0), Boiling bathing for 15 min; Block endogenous peroxidase by 3% Hydrogen peroxide for 30 min; Blocking buffer (normal goat serum) at 37°C for 20 min; Incubation: Anti-NET1 Polyclonal Antibody, Unconjugated (TMAB-01216) 1:200, overnight at 4° C, followed by conjugation to the secondary antibody and DAb staining.

2. Sample:

Jurkat (Human) Cell Lysate at 30 µg

Skin (Mouse) Lysate at 40 µg

Skin (Rat) Lysate at 40 µg

Primary: Anti-NET1 (TMAB-01216) at 1/1000 dilution

Secondary: IRDye800CW Goat Anti-Rabbit IgG at 1/20000 dilution

Predicted band size: 65 kDa

Observed band size: 65 kDa

3. Sample:

Lane 1: Mouse Cerebrum tissue lysates

Lane 2: Mouse Cerebellum tissue lysates

Lane 3: Mouse Heart tissue lysates

Lane 4: Rat Cerebrum tissue lysates

Lane 5: Rat Cerebellum tissue lysates

Lane 6: Rat Stomach tissue lysates

Lane 7: Human K562 cell lysates

Lane 8: Human A431 cell lysates

Lane 9: Human HepG2 cell lysates

Lane 10: Human MCF-7 cell lysates

Primary: Anti-NET1 (TMAB-01216) at 1/1000 dilution

Secondary: IRDye800CW Goat Anti-Rabbit IgG at 1/20000 dilution

Predicted band size: 65 kDa

Observed band size: 62 kDa

4. HepG2 cell; 4% Paraformaldehyde-fixed; Triton X-100 at room temperature for 20 min;

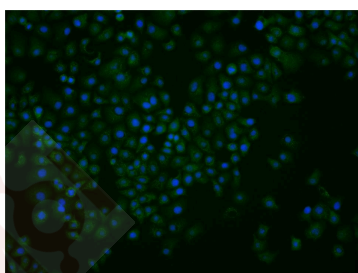
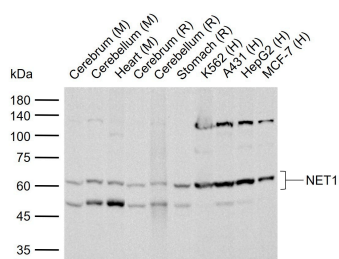
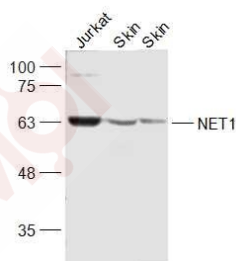
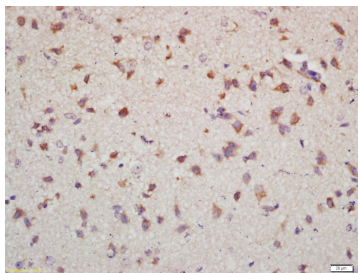
Blocking buffer (normal goat serum) at 37°C for 20 min; Antibody incubation with (NET1)

polyclonal Antibody, Unconjugated (TMAB-01216) 1:25, 90 minutes at 37°C; followed by a

conjugated Goat Anti-Rabbit IgG antibody at 37°C for 90 minutes, DAPI (blue) was used to stain

the cell nucleus.

Verified Activity:



Application: IF,IHC-Fr,IHC-P,WB

Recommended IF=1:100-500; IHC-Fr=1:100-500; IHC-P=1:100-500; WB=1:500-2000

### Properties

Stability & Storage: Store at -20°C or -80°C for 12 months. Avoid repeated freeze-thaw cycles.

Shipping: Shipping with blue ice.

### Antigen Details

Immunogen: KLH conjugated synthetic peptide: human NET1

Antigen Species: Human

Gene ID: 10276

Uniprot ID: Q7Z628

Synonyms: Norepinephrine transporter;NAT1;Sodium dependent noradrenaline transporter;SLC6A5;NET1; Solute carrier family 6(neurotransmitter transporter norepinephrine) member 5;SLC6A2;NET; Solute carrier family 6 member 2

Biology Area: Ras family,Other factors,Ras Family

### Research Background

This gene is part of the family of Rho guanine nucleotide exchange factors. Members of this family activate Rho proteins by catalyzing the exchange of GDP for GTP. The protein encoded by this gene interacts with RhoA within the cell nucleus and may play a role in repairing DNA damage after ionizing radiation. Pseudogenes of this gene are located on the long arms of chromosomes 1, 7 and 18. Alternative splicing results in multiple transcript variants that encode different protein isoforms.

**Inhibitor · Natural Compounds · Compound Libraries · Recombinant Proteins**

This product is for Research Use Only· Not for Human or Veterinary or Therapeutic Use

Tel:781-999-4286 E\_mail:info@targetmol.com Address:34 Washington Street,Wellesley Hills,MA 02481