

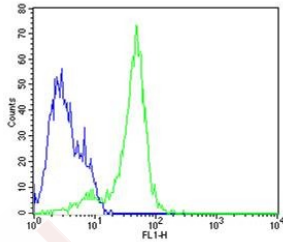
Anti-Nestin/NES Polyclonal Antibody

Product Details

Ig Type: IgG
Reactivity: Mouse (predicted:Rat)
Molecular Weight: Theoretical: 209 kDa.
Purification: Protein A purified

Applications

Cell: Neuro-2a
Concentration: 1:100
Host/Isotype: Rabbit/IgG
Verified Activity: Flow cytometric analysis of Rabbit IgG isotype control on Neuro-2a (blue) compared with primary antibody (Cat#: TMAB-01215)(green) followed by Alexa Fluor 488-conjugated goat anti-rabbit IgG (H+L) secondary antibody.



Application: FCM
Recommended: FCM: 1µg/Test

Properties

Stability & Storage: Store at -20°C or -80°C for 12 months. Avoid repeated freeze-thaw cycles.
Shipping: Shipping with blue ice.

Antigen Details

Immunogen: KLH conjugated synthetic peptide: rat Nestin
Antigen Species: Rat
Gene ID: 25491
Uniprot ID: P21263
Synonyms: Nbla00170;Intermediate filament protein;NEST_RAT;ESTM 46;FLJ21841;FLJ 21841;Nes;Nestin
Biology Area: Angiogenesis,Tumor antigens,Angiogenic Factors,Ectoderm,Intermediate Filaments,Neural Stem Cell marker,Neurogenesis,nestin,Ectoderm,Intracellular,Neuron Restricted Lineage

Research Background

Nestin is a Class VI intermediate filament expressed in the developing central nervous system (CNS) in early embryonic neuroepithelial stem cells. This protein has been widely used as a predominant marker for stem / progenitor cells, glioma cells, and tumor endothelial cells in the mammalian CNS. Furthermore, it is a superior

angiogenic marker to evaluate neovascularity of endothelial cells in tumor.

Inhibitor · Natural Compounds · Compound Libraries · Recombinant Proteins

This product is for Research Use Only · Not for Human or Veterinary or Therapeutic Use

Tel:781-999-4286 E_mail:info@targetmol.com Address:34 Washington Street,Wellesley Hills,MA 02481