

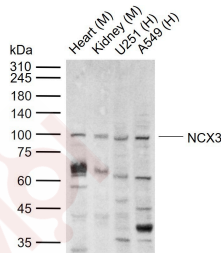
## Anti-NCX3 Polyclonal Antibody

### Product Details

**Ig Type:** IgG  
**Reactivity:** Human, Mouse (predicted: Rat, Chicken, Dog, Pig, Cow, Horse, Rabbit)  
**Molecular Weight:** Theoretical: 100 kDa. Actual: 100 kDa.  
**Purification:** Protein A purified

### Applications

**Sample:**  
 Lane 1: Mouse Heart tissue lysates  
 Lane 2: Mouse Kidney tissue lysates  
 Lane 3: Human U251 cell lysates  
**Verified Activity:** Lane 4: Human A549 cell lysates  
**Primary:** Anti-NCX3 (TMAB-01208) at 1/1000 dilution  
**Secondary:** IRDye800CW Goat Anti-Rabbit IgG at 1/20000 dilution  
**Predicted band size:** 100 kDa  
**Observed band size:** 100 kDa



**Application:** WB  
**Recommended:** WB: 1:500-2000

### Properties

**Stability & Storage:** Store at  $-20^{\circ}\text{C}$  or  $-80^{\circ}\text{C}$  for 12 months. Avoid repeated freeze-thaw cycles.  
**Shipping:** Shipping with blue ice.

### Antigen Details

**Immunogen:** KLH conjugated synthetic peptide: human NCX3  
**Antigen Species:** Human  
**Gene ID:** 6547  
**Uniprot ID:** P57103  
**Synonyms:** AW742262; NCX3; Sodium/calcium exchanger SLC8A3; Sodium/calcium exchanger 3; Na(+)/Ca(2+)-exchange protein 3; Solute carrier family 8 sodium calcium exchanger member 3; NAC3; Na+/Ca2+exchange protein 3; SCL8A3; Sodium calcium exchanger form 3; MGC90626; Na+/Ca2+exchanger 3

Research Background

SLC8A3 is a member of the sodium/calcium exchanger integral membrane protein family. Three mammalian isoforms in family 8 have been identified. Na<sup>+</sup>/Ca<sup>2+</sup> exchange proteins are involved in maintaining Ca<sup>2+</sup> homeostasis in a wide variety of cell types. The protein is regulated by intracellular calcium ions and is found in both the plasma membrane and intracellular organellar membranes, where exchange of Na<sup>+</sup> for Ca<sup>2+</sup> occurs in an electrogenic manner.

**Inhibitor · Natural Compounds · Compound Libraries · Recombinant Proteins**

This product is for Research Use Only · Not for Human or Veterinary or Therapeutic Use

Tel:781-999-4286 E\_mail:info@targetmol.com Address:34 Washington Street,Wellesley Hills,MA 02481