

Anti-NAV1.7 Polyclonal Antibody

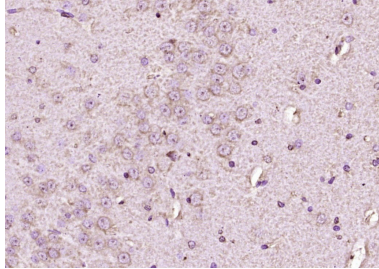
Product Details

Ig Type:	IgG
Reactivity:	Rat (predicted:Human,Mouse,Pig,Cow,Rabbit,Sheep)
Molecular Weight:	Theoretical: 219 kDa.
Purification:	Protein A purified

Applications

Verified Activity:

Paraformaldehyde-fixed, paraffin embedded (rat brain tissue); Antigen retrieval by boiling in sodium citrate buffer (pH6.0) for 15 min; Block endogenous peroxidase by 3% hydrogen peroxide for 20 min; Blocking buffer (normal goat serum) at 37°C for 30 min; Antibody incubation with (NAV1.7) Polyclonal Antibody, Unconjugated (TMAB-01203) at 1:200 overnight at 4°C, followed by operating according to SP Kit (Rabbit) instructions and DAB staining.



Application:	IF,IHC-Fr,IHC-P
Recommended	IHC-P: 1:100-500; IHC-Fr: 1:100-500; IF: 1:100-500

Properties

Stability & Storage:	Store at -20°C or -80°C for 12 months. Avoid repeated freeze-thaw cycles.
Shipping:	Shipping with blue ice.

Antigen Details

Immunogen:	KLH conjugated synthetic peptide: human NAV1.7
Antigen Species:	Human
Gene ID:	6335
Uniprot ID:	Q15858
Synonyms:	Sodium channel voltage gated type IX alpha polypeptide;SCN9A;hNE Na;Neuroendocrine sodium channel;Sodium channel protein type IX subunit alpha;PN1;FEB3B;Voltage gated sodium channel alpha subunit Nav1.7;Sodium channel voltage gated type IX alpha;Peripheral sodium channel 1;Sodium channel voltage gated type IX alpha subunit;Sodium channel protein type 9 subunit alpha;NE NA;NENA;Voltage gated sodium channel subunit alpha Nav1; ETHA;hNENa
Biology Area:	Channels,Sodium Channels,Cancer

Research Background

This gene encodes a voltage-gated sodium channel which plays a significant role in nociception signaling. Mutations in this gene have been associated with primary erythralgia, channelopathy-associated insensitivity to pain, and paroxysmal extreme pain disorder. [provided by RefSeq, Aug 2009]

Inhibitor · Natural Compounds · Compound Libraries · Recombinant Proteins

This product is for Research Use Only · Not for Human or Veterinary or Therapeutic Use

Tel:781-999-4286 E_mail:info@targetmol.com Address:34 Washington Street,Wellesley Hills,MA 02481