

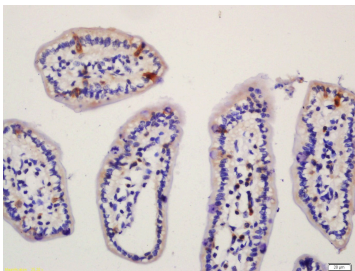
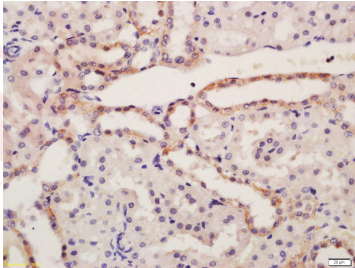
## Anti-NALP6 Polyclonal Antibody

### Product Details

Ig Type:	IgG
Reactivity:	Mouse,Rat (predicted:Human)
Molecular Weight:	Theoretical: 98 kDa.
Purification:	Protein A purified

### Applications

- Verified Activity:
1. Tissue/cell: rat kidney tissue; 4% Paraformaldehyde-fixed and paraffin-embedded; Antigen retrieval: citrate buffer (0.01M, pH6.0), Boiling bathing for 15 min; Block endogenous peroxidase by 3% Hydrogen peroxide for 30 min; Blocking buffer (normal goat serum) at 37°C for 20 min; Incubation: Anti-NALP6 Polyclonal Antibody, Unconjugated (TMAB-01200) 1:200, overnight at 4°C, followed by conjugation to the secondary antibody and DAb staining.
  2. Tissue/cell: mouse intestine tissue; 4% Paraformaldehyde-fixed and paraffin-embedded; Antigen retrieval: citrate buffer (0.01M, pH6.0), Boiling bathing for 15 min; Block endogenous peroxidase by 3% Hydrogen peroxide for 30 min; Blocking buffer (normal goat serum) at 37°C for 20 min; Incubation: Anti-NALP6 Polyclonal Antibody, Unconjugated (TMAB-01200) 1:200, overnight at 4°C, followed by conjugation to the secondary antibody and DAb staining.



Application:	IF,IHC-Fr,IHC-P
Recommended	IHC-P: 1:100-500; IHC-Fr: 1:100-500; IF: 1:100-500

### Properties

Stability & Storage: Store at -20°C or -80°C for 12 months. Avoid repeated freeze-thaw cycles.

Shipping: Shipping with blue ice.

---

### Antigen Details

Immunogen: KLH conjugated synthetic peptide: human NALP6

Antigen Species: Human

Gene ID: 171389

Uniprot ID: P59044

Synonyms: PYRIN containing APAF1 like protein 5;Nlrp6;PYPAF5;PAN3;NLR family, pyrin domain containing 6;NACHT, LRR and PYD domains-containing protein 6;Nucleotide binding oligomerization domain, leucine rich repeat and pyrin domain containing 6;NALP6;NACHT, leucine rich repeat and PYD containing 6;CLR11.4;NACHT, LRR and PYD containing protein 6

Biology Area: Caspases,Macrophage / Inflamm.,NFkB Pathway

---

### Research Background

NALPs are cytoplasmic proteins that form a subfamily within the larger CATERPILLER protein family. Most short NALPs, such as NALP6, have an N-terminal pyrin (MEFV; MIM 608107) domain (PYD), followed by a NACHT domain, a NACHT-associated domain (NAD), and a C-terminal leucine-rich repeat (LRR) region. The long NALP, NALP1 (MIM 606636), also has a C-terminal extension containing a function to find domain (FIIND) and a caspase recruitment domain (CARD). NALPs are implicated in the activation of proinflammatory caspases (e.g., CASP1; MIM 147678) via their involvement in multiprotein complexes called inflammasomes (Tschopp et al., 2003 [PubMed 12563287]). [supplied by OMIM, Mar 2008]

**Inhibitor · Natural Compounds · Compound Libraries · Recombinant Proteins**

This product is for Research Use Only · Not for Human or Veterinary or Therapeutic Use

Tel:781-999-4286 E\_mail:info@targetmol.com Address:34 Washington Street,Wellesley Hills,MA 02481