

Anti-N Cadherin Polyclonal Antibody

Product Details

Ig Type: IgG
Reactivity: Human, Mouse (predicted: Rat, Pig, Cow, Horse, Rabbit, Sheep)
Molecular Weight: Theoretical: 100 kDa. Actual: 120 kDa.
Purification: Protein A purified

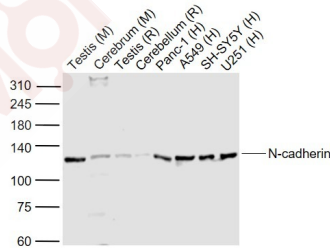
Applications

Sample:

Lane 1: Testis (Mouse) Lysate at 40 µg
Lane 2: Cerebrum (Mouse) Lysate at 40 µg
Lane 3: Testis (Rat) Lysate at 40 µg
Lane 4: Cerebellum (Rat) Lysate at 40 µg
Lane 5: Panc-1 (Human) Cell Lysate at 30 µg

Verified Activity:

Lane 6: A549 (Human) Cell Lysate at 30 µg
Lane 7: SH-SY5Y (Human) Cell Lysate at 30 µg
Lane 8: U251 (Human) Cell Lysate at 30 µg
Primary: Anti-N-cadherin (TMAB-01198) at 1/1000 dilution
Secondary: IRDye800CW Goat Anti-Rabbit IgG at 1/20000 dilution
Predicted band size: 130 kDa
Observed band size: 130 kDa



Application: WB
Recommended WB: 1:500-2000

Properties

Stability & Storage: Store at -20°C or -80°C for 12 months. Avoid repeated freeze-thaw cycles.
Shipping: Shipping with blue ice.

Antigen Details

Immunogen: KLH conjugated synthetic peptide: human N-cadherin
Antigen Species: Human
Gene ID: 1000
Uniprot ID: P19022
Synonyms: CDHN;NCAD;cadherin 2, type 1, N-cadherin (neuronal);CDw325;CD325
Biology Area: Cadherins,Cadherins,Surface Molecules

Research Background

This gene is a classical cadherin from the cadherin superfamily. The encoded protein is a calcium dependent cell-cell adhesion glycoprotein comprised of five extracellular cadherin repeats, a transmembrane region and a highly conserved cytoplasmic tail. The protein functions during gastrulation and is required for establishment of left-right asymmetry. At certain central nervous system synapses, presynaptic to postsynaptic adhesion is mediated at least in part by this gene product.

Inhibitor · Natural Compounds · Compound Libraries · Recombinant Proteins

This product is for Research Use Only· Not for Human or Veterinary or Therapeutic Use

Tel:781-999-4286 E_mail:info@targetmol.com Address:34 Washington Street,Wellesley Hills,MA 02481