

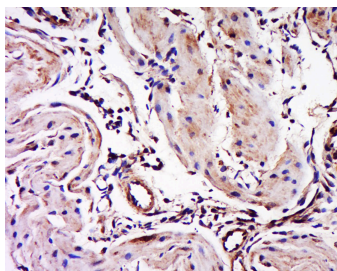
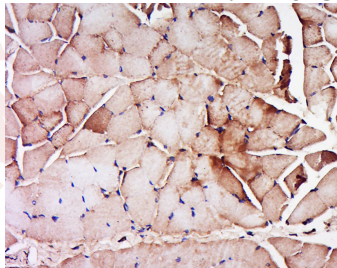
Anti-Myosin-3 Polyclonal Antibody

Product Details

Ig Type:	IgG
Reactivity:	Mouse,Rat (predicted:Human,Cow,Rabbit,Sheep,Pig)
Molecular Weight:	Theoretical: 224 kDa.
Purification:	Protein A purified

Applications

- Verified Activity:
1. Tissue/cell: Rat skeletal muscle; 4% Paraformaldehyde-fixed and paraffin-embedded; Antigen retrieval: citrate buffer (0.01M, pH6.0), Boiling bathing for 15 min; Block endogenous peroxidase by 3% Hydrogen peroxide for 30 min; Blocking buffer (normal goat serum) at 37°C for 20 min; Incubation: Anti-Myosin-3 Polyclonal Antibody, Unconjugated (TMAB-01197) 1:200, overnight at 4°C, followed by conjugation to the secondary antibody and DAb staining.
 2. Tissue/cell: Mouse placenta tissue; 4% Paraformaldehyde-fixed and paraffin-embedded; Antigen retrieval: citrate buffer (0.01M, pH6.0), Boiling bathing for 15 min; Block endogenous peroxidase by 3% Hydrogen peroxide for 30 min; Blocking buffer (normal goat serum) at 37°C for 20 min; Incubation: Anti-Myosin-3 Polyclonal Antibody, Unconjugated (TMAB-01197) 1:200, overnight at 4°C, followed by conjugation to the secondary antibody and DAb staining.



Application:	IF,IHC-Fr,IHC-P
Recommended	IHC-P: 1:100-500; IHC-Fr: 1:100-500; IF: 1:100-500

Properties

Stability & Storage: Store at -20°C or -80°C for 12 months. Avoid repeated freeze-thaw cycles.

Shipping: Shipping with blue ice.

Antigen Details

Immunogen: KLH conjugated synthetic peptide: human Myosin-3

Antigen Species: Human

Gene ID: 4621

Uniprot ID: P11055

Synonyms: SMHCE;Myosin-3;Muscle embryonic myosin heavy chain;Myosin heavy chain, fast skeletal muscle, embryonic;MYH3;Myosin heavy chain 3

Biology Area: Myosin

Inhibitor · Natural Compounds · Compound Libraries · Recombinant Proteins

This product is for Research Use Only · Not for Human or Veterinary or Therapeutic Use

Tel:781-999-4286 E_mail:info@targetmol.com Address:34 Washington Street,Wellesley Hills,MA 02481
