

Anti-Myogenin Polyclonal Antibody

Product Details

Ig Type:	IgG
Reactivity:	Mouse,Rat (predicted:Human,Dog,Pig,Cow,Horse,Rabbit,Sheep,GuineaPig)
Molecular Weight:	Theoretical: 25 kDa. Actual: 28 kDa.
Purification:	Protein A purified

Applications

Sample:

Lane 1: Mouse Heart tissue lysates

Lane 2: Rat Heart tissue lysates

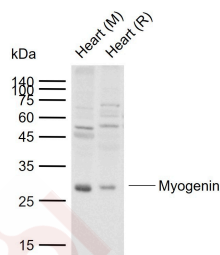
Verified Activity:

Primary: Anti-Myogenin (TMAB-01196) at 1/1000 dilution

Secondary: IRDye800CW Goat Anti-Rabbit IgG at 1/20000 dilution

Predicted band size: 25 kDa

Observed band size: 28 kDa



Application:	WB
Recommended	WB: 1:500-2000

Properties

Stability & Storage:	Store at -20°C or -80°C for 12 months. Avoid repeated freeze-thaw cycles.
Shipping:	Shipping with blue ice.

Antigen Details

Immunogen:	KLH conjugated synthetic peptide: human MYOG/Myogenin
Antigen Species:	Human
Gene ID:	4656
Uniprot ID:	P15173
Synonyms:	BHLHC3;MYOG;Class C basic helix-loop-helix protein 3(bHLHc3);MYF4;MYF 4;Myogenic factor 4 (Myf-4)
Biology Area:	HLH,Myogenesis

Research Background

Myogenin is a member of a family of myogenic regulatory genes, which includes MyoD, myf5 and MRF4. These genes encode a set of transcription factors, which are essential for muscle development. Transfection of myogenin

A DRUG SCREENING EXPERT

into multipotential mesodermal cells have been shown to convert the mesodermal cells to myoblasts. Expression of myogenin is restricted to cells of skeletal muscle origin. It is therefore a useful marker for tumors of the muscle lineage, being strongly expressed in alveolar rhabdomyosarcomas.

Inhibitor · Natural Compounds · Compound Libraries · Recombinant Proteins

This product is for Research Use Only · Not for Human or Veterinary or Therapeutic Use

Tel:781-999-4286 E_mail:info@targetmol.com Address:34 Washington Street,Wellesley Hills,MA 02481