

## Anti-MyoD1/Myf3 Polyclonal Antibody

### Product Details

Ig Type:	IgG
Reactivity:	Mouse,Rat (predicted:Human,Dog,Pig,Cow,Horse,Sheep)
Molecular Weight:	Theoretical: 35 kDa. Actual: 40 kDa.
Purification:	Protein A purified

### Applications

#### 1. Sample:

Lane 1: Liver (Mouse) Lysate at 40  $\mu$ g

Lane 2: Heart (Mouse) Lysate at 40  $\mu$ g

Primary: Anti-MyoD1/Myf3 (TMAB-01194) at 1/1000 dilution

Secondary: IRDye800CW Goat Anti-Rabbit IgG at 1/20000 dilution

Predicted band size: 40 kDa

Observed band size: 40 kDa

Verified Activity:

#### 2. Sample:

Lane 1: Skeletal muscle (Mouse) Lysate at 40  $\mu$ g

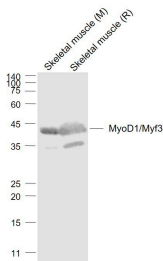
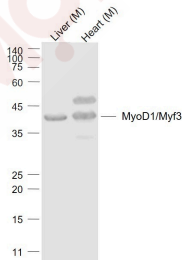
Lane 2: Skeletal muscle (Rat) Lysate at 40  $\mu$ g

Primary: Anti-MyoD1/Myf3 (TMAB-01194) at 1/1000 dilution

Secondary: IRDye800CW Goat Anti-Rabbit IgG at 1/20000 dilution

Predicted band size: 40 kDa

Observed band size: 40 kDa



Application: WB

Recommended WB: 1:500-2000

## A DRUG SCREENING EXPERT

---

### Properties

Stability & Storage: Store at -20°C or -80°C for 12 months. Avoid repeated freeze-thaw cycles.

Shipping: Shipping with blue ice.

---

### Antigen Details

Immunogen: KLH conjugated synthetic peptide: human MyoD1/Myf3

Antigen Species: Human

Gene ID: 4654

Uniprot ID: P15172

Synonyms: AI503393;MYOD1;Myogenic differentiation 1;MD1;bHLHc1;Myf-3;Class C basic helix-loop-helix protein 1;MYF3;PUM;MYOD;MGC156574;Myogenic factor 3

Biology Area: Muscle,HLH

---

### Research Background

This gene encodes a nuclear protein that belongs to the basic helix-loop-helix family of transcription factors and the myogenic factors subfamily. It regulates muscle cell differentiation by inducing cell cycle arrest, a prerequisite for myogenic initiation. The protein is also involved in muscle regeneration. It activates its own transcription which may stabilize commitment to myogenesis. [provided by RefSeq, Jul 2008]

**Inhibitor · Natural Compounds · Compound Libraries · Recombinant Proteins**

This product is for Research Use Only · Not for Human or Veterinary or Therapeutic Use

Tel:781-999-4286 E\_mail:info@targetmol.com Address:34 Washington Street,Wellesley Hills,MA 02481