

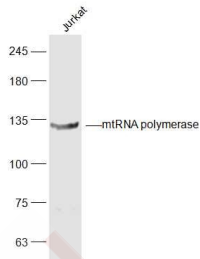
Anti-mtRNA polymerase Polyclonal Antibody

Product Details

Ig Type:	IgG
Reactivity:	Human (predicted:Mouse,Rat)
Molecular Weight:	Theoretical: 134 kDa. Actual: 134 kDa.
Purification:	Protein A purified

Applications

Sample:	Jurkat (Human) Cell Lysate at 30 µg
Verified Activity:	Primary: Anti-mtRNA polymerase (TMAB-01181) at 1/300 dilution Secondary: IRDye800CW Goat Anti-Rabbit IgG at 1/20000 dilution Predicted band size: 134 kDa Observed band size: 134 kDa



Application:	WB
Recommended	WB: 1:500-2000

Properties

Stability & Storage:	Store at -20°C or -80°C for 12 months. Avoid repeated freeze-thaw cycles.
Shipping:	Shipping with blue ice.

Antigen Details

Immunogen:	KLH conjugated synthetic peptide: human mtRNA polymerase
Antigen Species:	Human
Gene ID:	5442
Uniprot ID:	O00411
Synonyms:	POLRMT;DNA-directed RNA polymerase;MTRNAP;MtrPOL;APOLMT;polymerase, RNA, mitochondrial;RPOM;h-mtRPOL;DNA-directed RNA polymerase mitochondrial;polymerase (RNA) mitochondrial(DNA directed)
Biology Area:	Other factors,Nucleotide metabolism,Mitochondrial Biogenesis,Mitochondrial markers, Mitochondria

Research Background

This gene encodes a mitochondrial DNA-directed RNA polymerase. The gene product is responsible for

A DRUG SCREENING EXPERT

mitochondrial gene expression as well as for providing RNA primers for initiation of replication of the mitochondrial genome. Although this polypeptide has the same function as the three nuclear DNA-directed RNA polymerases, it is more closely related to RNA polymerases of phage and mitochondrial polymerases of lower eukaryotes. [provided by RefSeq, Jul 2008]

Inhibitor · Natural Compounds · Compound Libraries · Recombinant Proteins

This product is for Research Use Only · Not for Human or Veterinary or Therapeutic Use

Tel:781-999-4286 E_mail:info@targetmol.com Address:34 Washington Street,Wellesley Hills,MA 02481