

## Anti-MTNR1B Polyclonal Antibody

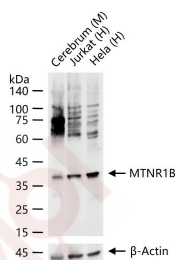
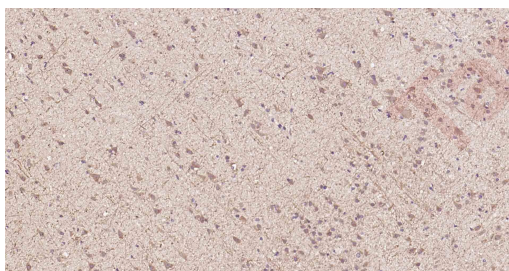
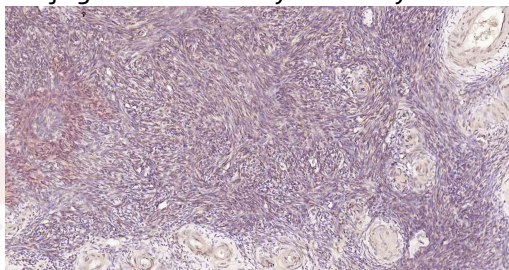
### Product Details

Ig Type:	IgG
Reactivity:	Human,Mouse
Molecular Weight:	Theoretical: 40 kDa. Actual: 40 kDa.
Purification:	Protein A purified

### Applications

1. Paraformaldehyde-fixed, paraffin embedded Human Ovary; Antigen retrieval by boiling in sodium citrate buffer (pH6.0) for 15 min; Antibody incubation with MTNR1B Polyclonal Antibody, Unconjugated (TMAB-01178) at 1:200 overnight at 4°C, followed by conjugation to the SP Kit (Rabbit) and DAB staining.
2. Paraformaldehyde-fixed, paraffin embedded Human Cerebrum; Antigen retrieval by boiling in sodium citrate buffer (pH6.0) for 15 min; Antibody incubation with MTNR1B Polyclonal Antibody, Unconjugated (TMAB-01178) at 1:200 overnight at 4°C, followed by conjugation to the SP Kit (Rabbit) and DAB staining.
3. 25 µg total protein per Lane of various lysates probed with MTNR1B polyclonal antibody, unconjugated (TMAB-01178) at 1:1000 dilution and 4°C overnight incubation. Followed by conjugated secondary antibody incubation at RT for 60 min.

Verified Activity:



Application: IF,IHC-Fr,IHC-P,WB

Recommended WB: 1:500-2000; IHC-P: 1:100-500; IHC-Fr: 1:100-500; IF: 1:100-500

### Properties

Stability & Storage: Store at -20°C or -80°C for 12 months. Avoid repeated freeze-thaw cycles.

Shipping: Shipping with blue ice.

---

### Antigen Details

Immunogen: KLH conjugated synthetic peptide: human MTNR1B

Antigen Species: Human

Gene ID: 4544

Uniprot ID: P49286

Synonyms: Mtnr1b;MGC129287;MTR1B;MT2;melatonin receptor;MEL1B;MEL-1B-R;MGC129286;MTNR-1B;  
Melatonin receptor 1B;melatonin receptor type 1B

Biology Area: Metabolism,More GPCR

---

### Research Background

This gene encodes one of two high affinity forms of a receptor for melatonin, the primary hormone secreted by the pineal gland. This receptor is a G-protein coupled, 7-transmembrane receptor that is responsible for melatonin effects on mammalian circadian rhythm and reproductive alterations affected by day length. The receptor is an integral membrane protein that is readily detectable and localized to two specific regions of the brain. The hypothalamic suprachiasmatic nucleus appears to be involved in circadian rhythm while the hypophysial pars tuberalis may be responsible for the reproductive effects of melatonin.

**[Inhibitor](#) · [Natural Compounds](#) · [Compound Libraries](#) · [Recombinant Proteins](#)**

This product is for Research Use Only. Not for Human or Veterinary or Therapeutic Use

Tel:781-999-4286 E\_mail:info@targetmol.com Address:34 Washington Street,Wellesley Hills,MA 02481