

## Anti-MTNR1A Polyclonal Antibody

### Product Details

Ig Type:	IgG
Reactivity:	Mouse,Rat (predicted:Human,Dog,Pig,Cow,Sheep)
Molecular Weight:	Theoretical: 39 kDa. Actual: 55 kDa.
Purification:	Protein A purified

### Applications

#### Sample:

Lane 1: Mouse Cerebrum tissue lysates

Lane 2: Mouse Pituitary tissue lysates

Lane 3: Mouse Testis tissue lysates

Lane 4: Rat Cerebrum tissue lysates

Verified Activity: Lane 5: Rat Pituitary tissue lysates

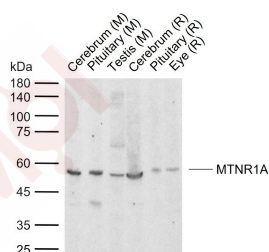
Lane 6: Rat Eye tissue lysates

Primary: Anti-MTNR1A (TMAB-01177) at 1/1000 dilution

Secondary: IRDye800CW Goat Anti-Rabbit IgG at 1/20000 dilution

Predicted band size: 39 kDa

Observed band size: 55 kDa



Application: WB

Recommended WB: 1:500-2000

### Properties

Stability & Storage: Store at -20°C or -80°C for 12 months. Avoid repeated freeze-thaw cycles.

Shipping: Shipping with blue ice.

### Antigen Details

Immunogen:	KLH conjugated synthetic peptide: the middle of human MTNR1A
Antigen Species:	Human
Gene ID:	4543
Synonyms:	Mel1a receptor;MT1;Melatonin receptor type 1A;Mel-1A-R;MTR1A;MT 1;Melatonin Receptor 1A
Biology Area:	Hypothalamic pituitary adrenal axis, Metabolism, More GPCR

---

### Research Background

This gene encodes one of two high affinity forms of a receptor for melatonin, the primary hormone secreted by the pineal gland. This receptor is a G-protein coupled, 7-transmembrane receptor that is responsible for melatonin effects on mammalian circadian rhythm and reproductive alterations affected by day length. The receptor is an integral membrane protein that is readily detectable and localized to two specific regions of the brain. The hypothalamic suprachiasmatic nucleus appears to be involved in circadian rhythm while the hypophysial pars tuberalis may be responsible for the reproductive effects of melatonin. [provided by RefSeq, Jul 2008]

**Inhibitor · Natural Compounds · Compound Libraries · Recombinant Proteins**

This product is for Research Use Only · Not for Human or Veterinary or Therapeutic Use

Tel: 781-999-4286    E\_mail: info@targetmol.com    Address: 34 Washington Street, Wellesley Hills, MA 02481