

Anti-MT-ND6 Polyclonal Antibody

Product Details

Ig Type: IgG
Reactivity: Human,Rat (predicted:Mouse,Dog,Cow,Horse,Sheep)
Molecular Weight: Theoretical: 19 kDa.
Purification: Protein A purified

Applications

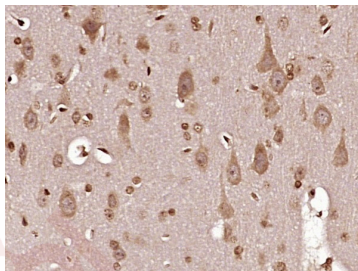
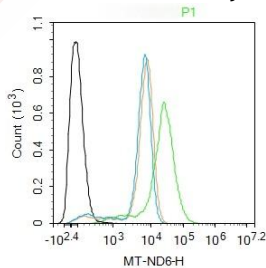
1. Blank control: THP-1. Primary Antibody (green line): Rabbit Anti-MT-ND6 antibody (TMAB-01176)
 Dilution: 1 µg/10⁶ cells;
 Isotype Control Antibody (orange line): Rabbit IgG.
 Secondary Antibody: Goat anti-rabbit IgG-FITC
 Dilution: 0.5 µg/test.

Protocol

Verified Activity:

The cells were fixed with 4% PFA (10 min at room temperature) and then permeabilized with 0.1% PBST for 20 min at room temperature. The cells were then incubated in 5% BSA to block non-specific protein-protein interactions for 30 min at room temperature. Cells stained with Primary Antibody for 30 min at room temperature. The secondary antibody used for 40 min at room temperature.

2. Paraformaldehyde-fixed, paraffin embedded (rat brain tissue); Antigen retrieval by boiling in sodium citrate buffer (pH6.0) for 15 min; Block endogenous peroxidase by 3% hydrogen peroxide for 20 min; Blocking buffer (normal goat serum) at 37°C for 30 min; Antibody incubation with (MT-ND6) Polyclonal Antibody, Unconjugated (TMAB-01176) at 1:400 overnight at 4°C, followed by operating according to SP Kit (Rabbit) instructions and DAB staining.



Application: FCM,IF,IHC-Fr,IHC-P

Recommended: IHC-P: 1:100-500; IHC-Fr: 1:100-500; IF: 1:100-500; FCM: 1ug/Test

Properties

Stability & Storage: Store at -20°C or -80°C for 12 months. Avoid repeated freeze-thaw cycles.

Shipping: Shipping with blue ice.

Antigen Details

Immunogen: KLH conjugated synthetic peptide: human MTND6

Antigen Species: Human

Gene ID: 4541

Uniprot ID: P03923

Synonyms: NADH6;NU6M;NADH-ubiquinone oxidoreductase chain 6;NADH Ubiquinone Oxidoreductase subunit ND6;MT ND6;NADH dehydrogenase subunit 6(complex I);ND6;mtND6;Mitochondrially encoded NADH dehydrogenase 6;NADH ubiquinone oxidoreductase chain 6;NADH dehydrogenase subunit 6

Biology Area: Integration of energy metabolism,Integration of energy,Mitochondrial markers,Complex I, Visual system,Mitochondrial

Research Background

NADH Dehydrogenase subunit 6 (MTND6) is 1 of the 7 mitochondrial DNA (mtDNA) encoded subunits (MTND1, MTND2, MTND3, MTND4L, MTND4, MTND5, MTND6) included among the approximately 41 polypeptides of respiratory Complex I. Complex I accepts electrons from NADH, transfers them to ubiquinone (Coenzyme Q10), and uses the energy released to pump protons across the mitochondria inner membrane. MTND6 has been proposed to be a component of the iron-protein fragment.

Inhibitor · Natural Compounds · Compound Libraries · Recombinant Proteins

This product is for Research Use Only · Not for Human or Veterinary or Therapeutic Use

Tel:781-999-4286 E_mail:info@targetmol.com Address:34 Washington Street,Wellesley Hills,MA 02481