

Anti-MRC1 Antibody (6P560)

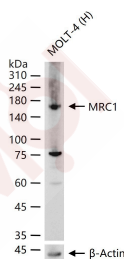
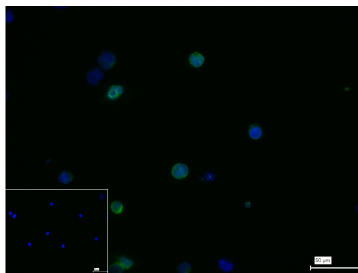
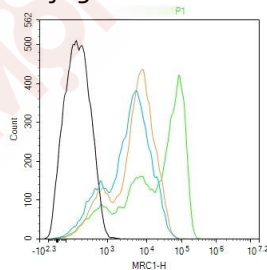
Product Details

Ig Type:	IgG
Reactivity:	Human
Molecular Weight:	Theoretical: 166/140 kDa. Actual: 165 kDa.
Clone:	6P560
Purification:	Protein A purified

Applications

Verified Activity:

1. The Molt-4 (H) cells were incubated in 5% BSA to block non-specific protein-protein interactions (30 min at room temperature). Primary Antibody (green): Rabbit Anti-MRC1 antibody (TMAB-01168): 1 $\mu\text{g}/10^6$ cells; Secondary Antibody (white blue): Goat anti-Rabbit IgG-FITC: 1 $\mu\text{g}/\text{test}$. Isotype Control (orange): Rabbit IgG. Blank control (black): PBS.
2. 4% Paraformaldehyde-fixed Molt-4 (H) cell; Triton X-100 at RT for 20 min; Antibody incubation with (MRC1) monoclonal Antibody, unconjugated (TMAB-01168) 1:100, 90 min at 37°C; followed by conjugated Goat Anti-Rabbit IgG antibody (green) at 37°C for 90 min, DAPI (blue) was used to stain the cell nucleus. PBS instead of the primary antibody was used as the blank control.
3. 25 μg total protein per Lane of various lysates probed with MRC1 monoclonal antibody, unconjugated (TMAB-01168) at 1:1000 dilution and 4°C overnight incubation. Followed by conjugated secondary antibody incubation at RT for 60 min.



A DRUG SCREENING EXPERT

Application: FCM,ICC/IF,WB

Recommended FCM=1 µg/Test; ICC/IF=1:50-200; WB=1:1000-2000

Properties

Stability & Storage: Store at -20°C or -80°C for 12 months. Avoid repeated freeze-thaw cycles.

Shipping: Shipping with blue ice.

Antigen Details

Immunogen: A synthesized peptide: human MRC1

Antigen Species: Human

Gene ID: 4360

Uniprot ID: P22897

Synonyms: C-type lectin domain family 13 member D-like;CLEC13D;Macrophage mannose receptor 1; MRC1L1;CD206;C-type lectin domain family 13 member D;MMR;Human mannose receptor (hMR);CLEC13DL;Macrophage mannose receptor 1-like protein 1;MRC1

Biology Area: Receptors,Macrophage / Inflamm.

Research Background

The recognition of complex carbohydrate structures on glycoproteins is an important part of several biological processes, including cell-cell recognition, serum glycoprotein turnover, and neutralization of pathogens. The protein encoded by this gene is a type I membrane receptor that mediates the endocytosis of glycoproteins by macrophages. The protein has been shown to bind high-mannose structures on the surface of potentially pathogenic viruses, bacteria, and fungi so that they can be neutralized by phagocytic engulfment. This gene is in close proximity to MRC1L1. The gene loci including this gene, MRC1L1, as well as LOC340843 and LOC340893, consist of two nearly identical, tandemly linked genomic regions, which are thought to be a part of a duplicated region. [provided by RefSeq].

Inhibitor · Natural Compounds · Compound Libraries · Recombinant Proteins

This product is for Research Use Only · Not for Human or Veterinary or Therapeutic Use

Tel:781-999-4286 E_mail:info@targetmol.com Address:34 Washington Street,Wellesley Hills,MA 02481