

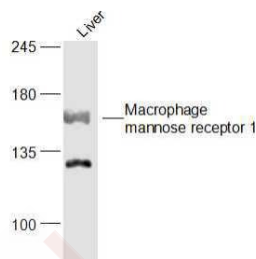
## Anti-MRC1 Polyclonal Antibody

## Product Details

Ig Type:	IgG
Reactivity:	Human,Rat (predicted:Mouse,Rabbit)
Molecular Weight:	Theoretical: 160 kDa. Actual: 160 kDa.
Purification:	Protein A purified

## Applications

Sample:	Liver (Rat) Lysate at 40 µg
Verified Activity:	Primary: Anti-Macrophage mannose receptor 1 (TMAB-01166) at 1/1000 dilution Secondary: IRDye800CW Goat Anti-Rabbit IgG at 1/20000 dilution Predicted band size: 160 kDa Observed band size: 160 kDa



Application:	WB
Recommended	WB: 1:500-2000

## Properties

Stability & Storage:	Store at -20°C or -80°C for 12 months. Avoid repeated freeze-thaw cycles.
Shipping:	Shipping with blue ice.

## Antigen Details

Immunogen:	KLH conjugated synthetic peptide: human Macrophage mannose receptor 1
Antigen Species:	Human
Gene ID:	4360
Uniprot ID:	P22897
Synonyms:	CLEC13D;Human mannose receptor (hMR);MRC1;C-type lectin domain family 13 member D-like;Macrophage mannose receptor 1;Macrophage mannose receptor 1-like protein 1;C-type lectin domain family 13 member D;CLEC13DL;CD206;MMR;MRC1L1
Biology Area:	Receptors,Macrophage / Inflamm.

## Research Background

The recognition of complex carbohydrate structures on glycoproteins is an important part of several biological processes, including cell-cell recognition, serum glycoprotein turnover, and neutralization of pathogens. The protein

## A DRUG SCREENING EXPERT

---

encoded by this gene is a type I membrane receptor that mediates the endocytosis of glycoproteins by macrophages. The protein has been shown to bind high-mannose structures on the surface of potentially pathogenic viruses, bacteria, and fungi so that they can be neutralized by phagocytic engulfment. This gene is in close proximity to MRC1L1. The gene loci including this gene, MRC1L1, as well as LOC340843 and LOC340893, consist of two nearly identical, tandemly linked genomic regions, which are thought to be a part of a duplicated region. [provided by RefSeq].

**Inhibitor · Natural Compounds · Compound Libraries · Recombinant Proteins**

This product is for Research Use Only · Not for Human or Veterinary or Therapeutic Use

Tel:781-999-4286 E\_mail:info@targetmol.com Address:34 Washington Street,Wellesley Hills,MA 02481