

Anti-MRC1 Antibody (6S133)

Product Details

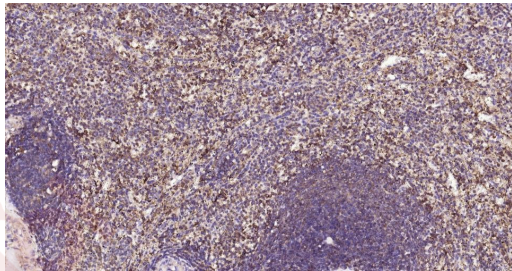
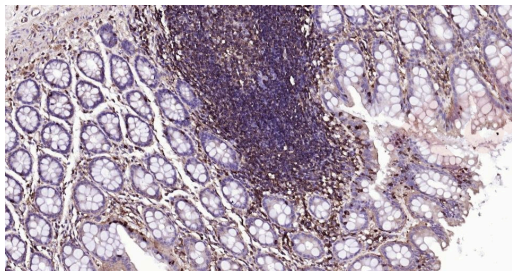
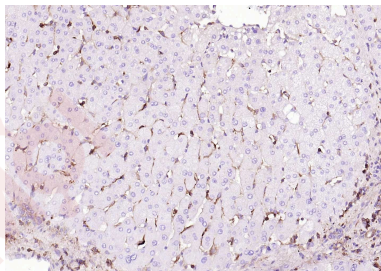
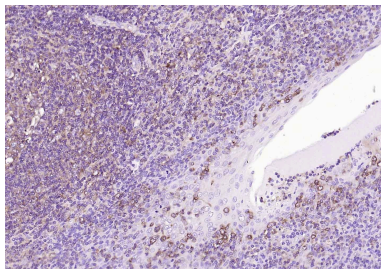
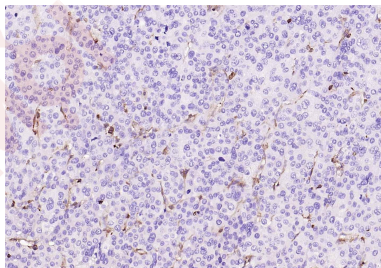
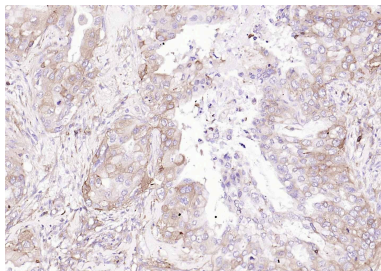
Ig Type:	IgG
Reactivity:	Human
Molecular Weight:	Theoretical: 160 kDa.
Clone:	6S133
Purification:	Protein A purified

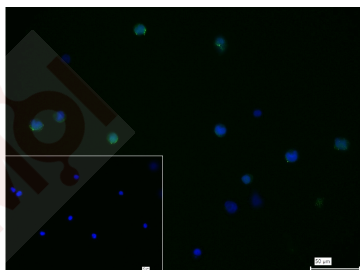
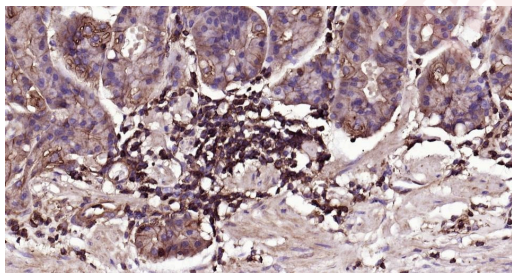
Applications

Verified Activity:

1. Paraformaldehyde-fixed, paraffin embedded (human lung carcinoma); Antigen retrieval by boiling in sodium citrate buffer (pH6.0) for 15 min; Block endogenous peroxidase by 3% hydrogen peroxide for 20 min; Blocking buffer (normal goat serum) at 37°C for 30 min; Incubation with (CD206) Monoclonal Antibody, Unconjugated (TMAB-01165) at 1:300 overnight at 4°C, followed by operating according to SP Kit (Rabbit) instructions and DAB staining.
2. Paraformaldehyde-fixed, paraffin embedded (human liver carcinoma); Antigen retrieval by boiling in sodium citrate buffer (pH6.0) for 15 min; Block endogenous peroxidase by 3% hydrogen peroxide for 20 min; Blocking buffer (normal goat serum) at 37°C for 30 min; Incubation with (CD206) Monoclonal Antibody, Unconjugated (TMAB-01165) at 1:300 overnight at 4°C, followed by operating according to SP Kit (Rabbit) instructions and DAB staining.
3. Paraformaldehyde-fixed, paraffin embedded (human tonsil); Antigen retrieval by boiling in sodium citrate buffer (pH6.0) for 15 min; Block endogenous peroxidase by 3% hydrogen peroxide for 20 min; Blocking buffer (normal goat serum) at 37°C for 30 min; Incubation with (CD206) Monoclonal Antibody, Unconjugated (TMAB-01165) at 1:300 overnight at 4°C, followed by operating according to SP Kit (Rabbit) instructions and DAB staining.
4. Paraformaldehyde-fixed, paraffin embedded (human liver); Antigen retrieval by boiling in sodium citrate buffer (pH6.0) for 15 min; Block endogenous peroxidase by 3% hydrogen peroxide for 20 min; Blocking buffer (normal goat serum) at 37°C for 30 min; Incubation with (CD206) Monoclonal Antibody, Unconjugated (TMAB-01165) at 1:300 overnight at 4°C, followed by operating according to SP Kit (Rabbit) instructions and DAB staining.
5. Paraformaldehyde-fixed, paraffin embedded Human Colon; Antigen retrieval by boiling in sodium citrate buffer (pH6.0) for 15 min; Antibody incubation with CD206 Monoclonal Antibody, Unconjugated (TMAB-01165) at 1:1000 overnight at 4°C, followed by conjugation to the SP Kit (Rabbit) and DAB staining.
6. Paraformaldehyde-fixed, paraffin embedded Human Spleen; Antigen retrieval by boiling in sodium citrate buffer (pH6.0) for 15 min; Antibody incubation with CD206 Monoclonal Antibody, Unconjugated (TMAB-01165) at 1:1000 overnight at 4°C, followed by conjugation to the SP Kit (Rabbit) and DAB staining.
7. Paraformaldehyde-fixed, paraffin embedded Human Fundus; Antigen retrieval by boiling in sodium citrate buffer (pH6.0) for 15 min; Antibody incubation with CD206 Monoclonal Antibody, Unconjugated (TMAB-01165) at 1:1000 overnight at 4°C, followed by conjugation to the SP Kit (Rabbit) and DAB staining.
8. 4% Paraformaldehyde-fixed Molt-4 (H) cell; Triton X-100 at RT for 20 min; Antibody incubation with (MRC1) monoclonal Antibody, unconjugated (TMAB-01165) 1:100, 90 min at 37°C; followed by conjugated Goat Anti-Rabbit IgG antibody (green) at 37°C for 90 min, DAPI (blue) was used to stain the cell nucleus. PBS instead of the primary antibody was used as the blank

control.





Application: ICC/IF,IF,IHC-Fr,IHC-P
Recommended IHC-P: 1:200-1000; IHC-Fr: 1:200-1000; ICC/IF: 1:50-200; IF: 1:200-1000

Properties

Stability & Storage: Store at -20°C or -80°C for 12 months. Avoid repeated freeze-thaw cycles.
Shipping: Shipping with blue ice.

Antigen Details

Immunogen: KLH conjugated synthetic peptide: human CD206
Antigen Species: Human
Gene ID: 4360
Uniprot ID: P22897
Synonyms: MRC1L1;MMR;MRC1;Macrophage mannose receptor 1;CD206;Human mannose receptor (hMR);CLEC13DL;C-type lectin domain family 13 member D-like;Macrophage mannose receptor 1-like protein 1;C-type lectin domain family 13 member D;CLEC13D
Biology Area: Receptors,Macrophage / Inflamm.

Research Background

The recognition of complex carbohydrate structures on glycoproteins is an important part of several biological processes, including cell-cell recognition, serum glycoprotein turnover, and neutralization of pathogens. The protein encoded by this gene is a type I membrane receptor that mediates the endocytosis of glycoproteins by macrophages. The protein has been shown to bind high-mannose structures on the surface of potentially pathogenic viruses, bacteria, and fungi so that they can be neutralized by phagocytic engulfment. This gene is in close proximity to MRC1L1. The gene loci including this gene, MRC1L1, as well as LOC340843 and LOC340893, consist of two nearly identical, tandemly linked genomic regions, which are thought to be a part of a duplicated region. [provided by RefSeq].

Inhibitor · Natural Compounds · Compound Libraries · Recombinant Proteins

This product is for Research Use Only · Not for Human or Veterinary or Therapeutic Use

Tel:781-999-4286 E_mail:info@targetmol.com Address:34 Washington Street,Wellesley Hills,MA 02481