

## Anti-MMP-9 Antibody (3R987)

## Product Details

Ig Type:	IgG
Reactivity:	Human,Mouse,Rat
Molecular Weight:	Theoretical: 100 kDa. Actual: 85 kDa.
Clone:	3R987
Purification:	Protein A purified

## Applications

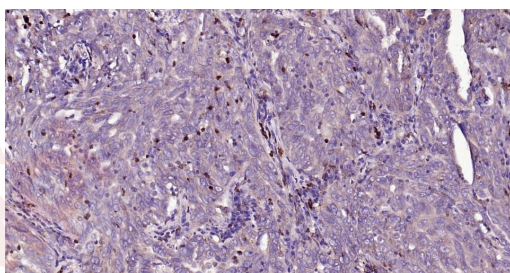
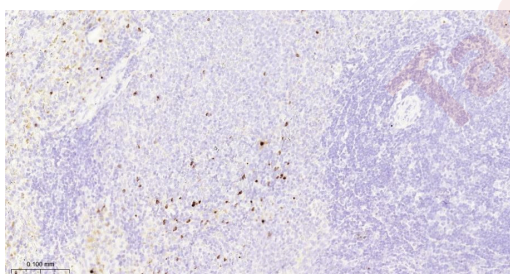
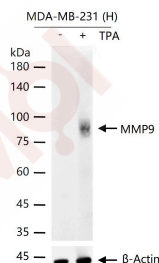
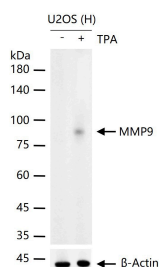
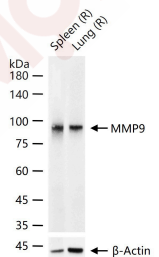
## Verified Activity:

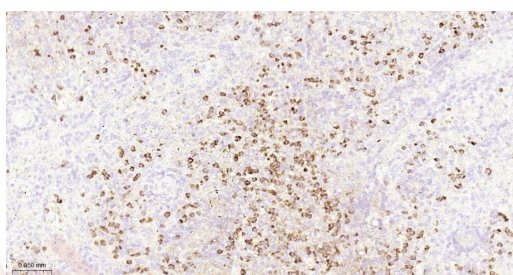
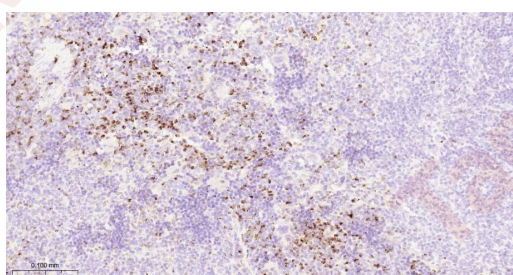
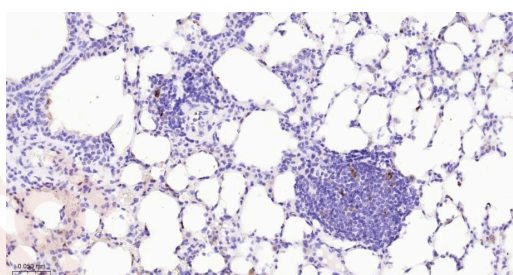
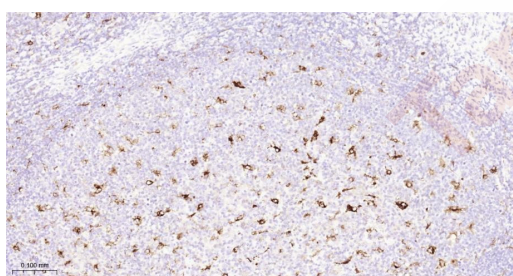
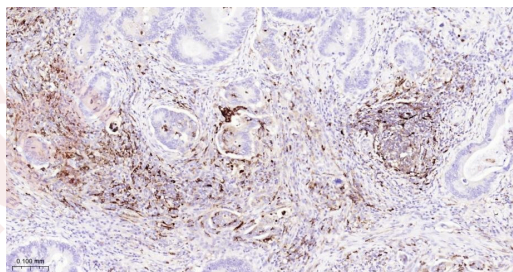
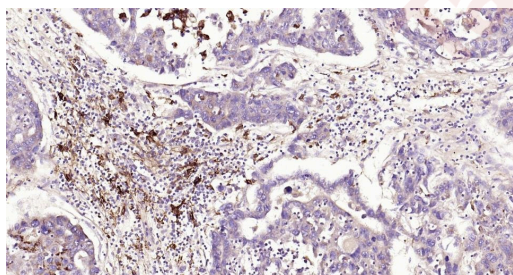
1. 25 µg total protein per Lane of various lysates probed with MMP9 monoclonal antibody, unconjugated (TMAB-01160) at 1:5000 dilution and 4°C overnight incubation. Followed by conjugated secondary antibody incubation at RT for 60 min.
2. U2OS (H) cells were treated with or without TPA (200nM,48h) for 30 min, 25 µg total protein per Lane of cell lysates probed with MMP9 monoclonal antibody, unconjugated (TMAB-01160) at 1:5000 dilution and 4°C overnight incubation. Followed by conjugated secondary antibody incubation at RT for 60 min.
3. MDA-MB-231 (H) cells were treated with or without TPA (200nM,24h) for 30 min, 25 µg total protein per Lane of cell lysates probed with MMP9 monoclonal antibody, unconjugated (TMAB-01160) at 1:5000 dilution and 4°C overnight incubation. Followed by conjugated secondary antibody incubation at RT for 60 min.
4. Paraformaldehyde-fixed, paraffin embedded Rat Spleen; Antigen retrieval by boiling in sodium citrate buffer (pH6.0) for 15 min; The section was incubated with MMP9 Monoclonal Antibody, Unconjugated (TMAB-01160) at 1:200 overnight at 4°C, followed by conjugation to the SP Kit (Rabbit) and DAB staining.
5. Paraformaldehyde-fixed, paraffin embedded Human Lung Cancer; Antigen retrieval by boiling in sodium citrate buffer (pH6.0) for 15 min; The section was incubated with MMP9 Monoclonal Antibody, Unconjugated (TMAB-01160) at 1:200 overnight at 4°C, followed by conjugation to the SP Kit (Rabbit) and DAB staining.
6. Paraformaldehyde-fixed, paraffin embedded Human Liver Cancer; Antigen retrieval by boiling in sodium citrate buffer (pH6.0) for 15 min; The section was incubated with MMP9 Monoclonal Antibody, Unconjugated (TMAB-01160) at 1:200 overnight at 4°C, followed by conjugation to the SP Kit (Rabbit) and DAB staining.
7. Paraformaldehyde-fixed, paraffin embedded Human Colon Cancer; Antigen retrieval by boiling in sodium citrate buffer (pH6.0) for 15 min; The section was incubated with MMP9 Monoclonal Antibody, Unconjugated (TMAB-01160) at 1:200 overnight at 4°C, followed by conjugation to the SP Kit (Rabbit) and DAB staining.
8. Paraformaldehyde-fixed, paraffin embedded Human Tonsil; Antigen retrieval by boiling in sodium citrate buffer (pH6.0) for 15 min; The section was incubated with MMP9 Monoclonal Antibody, Unconjugated (TMAB-01160) at 1:200 overnight at 4°C, followed by conjugation to the SP Kit (Rabbit) and DAB staining.
9. Paraformaldehyde-fixed, paraffin embedded Mouse Lung; Antigen retrieval by boiling in sodium citrate buffer (pH6.0) for 15 min; The section was incubated with MMP9 Monoclonal Antibody, Unconjugated (TMAB-01160) at 1:200 overnight at 4°C, followed by conjugation to the secondary antibody and DAB staining.
10. Paraformaldehyde-fixed, paraffin embedded Mouse Spleen; Antigen retrieval by boiling in

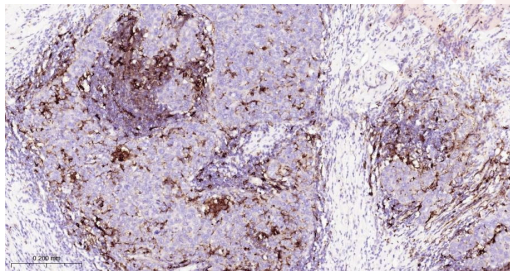
sodium citrate buffer (pH6.0) for 15 min; The section was incubated with MMP9 Monoclonal Antibody, Unconjugated (TMAB-01160) at 1:200 overnight at 4°C, followed by conjugation to the secondary antibody and DAB staining.

11. Paraformaldehyde-fixed, paraffin embedded Human Spleen; Antigen retrieval by boiling in sodium citrate buffer (pH6.0) for 15 min; The section was incubated with MMP9 Monoclonal Antibody, Unconjugated (TMAB-01160) at 1:200 overnight at 4°C, followed by conjugation to the secondary antibody and DAB staining.

12. Paraformaldehyde-fixed, paraffin embedded Human Breast Cancer; Antigen retrieval by boiling in sodium citrate buffer (pH6.0) for 15 min; The section was incubated with MMP9 Monoclonal Antibody, Unconjugated (TMAB-01160) at 1:200 overnight at 4°C, followed by conjugation to the secondary antibody and DAB staining.







Application: IF,IHC-Fr,IHC-P,WB

Recommended IF=1:200-1000; IHC-Fr=1:200-1000; IHC-P=1:200-1000; WB=1:2000-20000

### Properties

Stability & Storage: Store at -20°C or -80°C for 12 months. Avoid repeated freeze-thaw cycles.

Shipping: Shipping with blue ice.

### Antigen Details

Immunogen: A synthesized peptide: human MMP9

Antigen Species: Human

Gene ID: 4318

Uniprot ID: P14780

Synonyms: MMP-9;CLG4B;Gelatinase B;GELB;MANDP2

Biology Area: MMP,Protease inhibitors ELISA kits,Cancer proteins ELISA kits,Atherosclerotic proteins ELISA kits, MMPs,Thrombosis,MMP,MMPs,MMPs,MMPs

### Research Background

Proteins of the matrix metalloproteinase (MMP) family are involved in the breakdown of extracellular matrix in normal physiological processes, such as embryonic development, reproduction, and tissue remodeling, as well as in disease processes, such as arthritis and metastasis. Most MMP's are secreted as inactive proproteins which are activated when cleaved by extracellular proteinases. The enzyme encoded by this gene degrades type IV and V collagens. Studies in rhesus monkeys suggest that the enzyme is involved in IL-8-induced mobilization of hematopoietic progenitor cells from bone marrow, and murine studies suggest a role in tumor-associated tissue remodeling. [provided by RefSeq, Jul 2008].

**Inhibitor · Natural Compounds · Compound Libraries · Recombinant Proteins**

This product is for Research Use Only · Not for Human or Veterinary or Therapeutic Use

Tel:781-999-4286 E\_mail:info@targetmol.com Address:34 Washington Street,Wellesley Hills,MA 02481