

Anti-MMP-9 Polyclonal Antibody 3

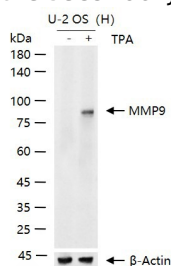
Product Details

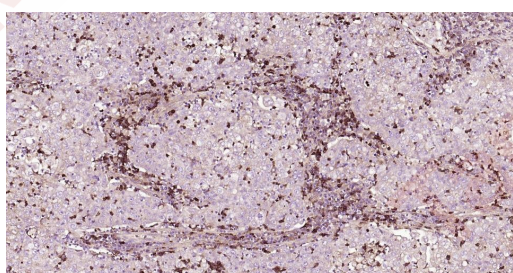
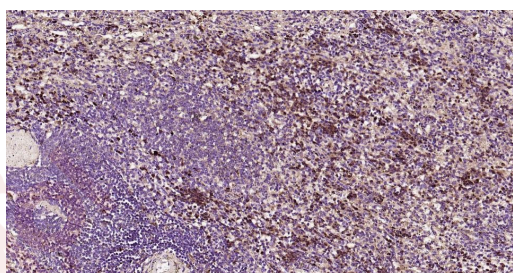
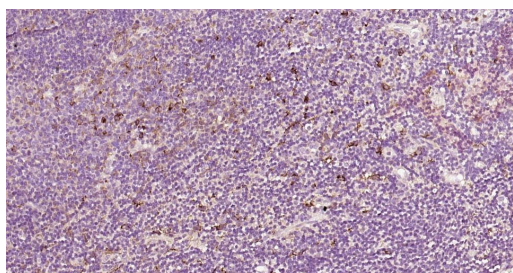
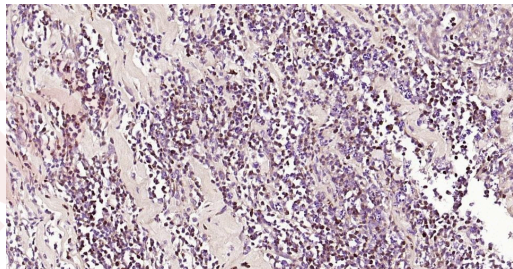
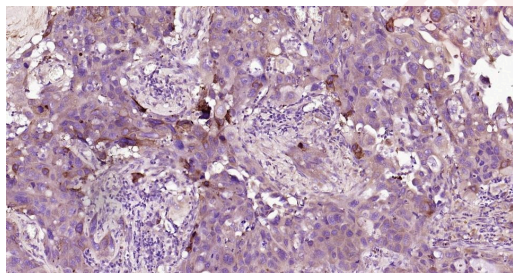
Ig Type:	IgG
Reactivity:	Human
Molecular Weight:	Theoretical: 78 kDa. Actual: 110 kDa.
Purification:	Protein A purified

Applications

- 25 µg total protein per Lane of various lysates probed with MMP9 polyclonal antibody, unconjugated (TMAB-01159) at 1:1000 dilution and 4°C overnight incubation. Followed by conjugated secondary antibody incubation at RT for 60 min.
- Paraformaldehyde-fixed, paraffin embedded Human Lung Cancer; Antigen retrieval by boiling in sodium citrate buffer (pH6.0) for 15 min; Antibody incubation with MMP9 Polyclonal Antibody, Unconjugated (TMAB-01159) at 1:200 overnight at 4°C, followed by conjugation to the secondary antibody and DAB staining.
- Paraformaldehyde-fixed, paraffin embedded Human Colon Cancer; Antigen retrieval by boiling in sodium citrate buffer (pH6.0) for 15 min; Antibody incubation with MMP9 Polyclonal Antibody, Unconjugated (TMAB-01159) at 1:200 overnight at 4°C, followed by conjugation to the secondary antibody and DAB staining.
- Paraformaldehyde-fixed, paraffin embedded Human Tonsil; Antigen retrieval by boiling in sodium citrate buffer (pH6.0) for 15 min; Antibody incubation with MMP9 Polyclonal Antibody, Unconjugated (TMAB-01159) at 1:200 overnight at 4°C, followed by conjugation to the secondary antibody and DAB staining.
- Paraformaldehyde-fixed, paraffin embedded Human Spleen; Antigen retrieval by boiling in sodium citrate buffer (pH6.0) for 15 min; Antibody incubation with MMP9 Polyclonal Antibody, Unconjugated (TMAB-01159) at 1:200 overnight at 4°C, followed by conjugation to the secondary antibody and DAB staining.
- Paraformaldehyde-fixed, paraffin embedded Human Gastric Cancer; Antigen retrieval by boiling in sodium citrate buffer (pH6.0) for 15 min; Antibody incubation with MMP9 Polyclonal Antibody, Unconjugated (TMAB-01159) at 1:200 overnight at 4°C, followed by conjugation to the secondary antibody and DAB staining.

Verified Activity:





Application: ELISA,IF,IHC-Fr,IHC-P,WB

Recommended WB: 1:500-2000; IHC-P: 1:100-500; IHC-Fr: 1:100-500; IF: 1:100-500; ELISA: 1:5000-10000

Properties

Stability & Storage: Store at -20°C or -80°C for 12 months. Avoid repeated freeze-thaw cycles.

Shipping: Shipping with blue ice.

Antigen Details

Immunogen:	KLH conjugated synthetic peptide: human MMP9
Antigen Species:	Human
Gene ID:	4318
Uniprot ID:	P14780
Synonyms:	Gelatinase B;GELB;CLG4B;MANDP2;MMP-9
Biology Area:	MMP,Protease inhibitors ELISA kits,Cancer proteins ELISA kits,Atherosclerotic proteins ELISA kits, MMPs,Thrombosis,MMP,MMPs,MMPs,MMPs

Research Background

Proteins of the matrix metalloproteinase (MMP) family are involved in the breakdown of extracellular matrix in normal physiological processes, such as embryonic development, reproduction, and tissue remodeling, as well as in disease processes, such as arthritis and metastasis. Most MMP's are secreted as inactive proproteins which are activated when cleaved by extracellular proteinases. The enzyme encoded by this gene degrades type IV and V collagens. Studies in rhesus monkeys suggest that the enzyme is involved in IL-8-induced mobilization of hematopoietic progenitor cells from bone marrow, and murine studies suggest a role in tumor-associated tissue remodeling. [provided by RefSeq, Jul 2008].

Inhibitor · Natural Compounds · Compound Libraries · Recombinant Proteins

This product is for Research Use Only · Not for Human or Veterinary or Therapeutic Use

Tel:781-999-4286 E_mail:info@targetmol.com Address:34 Washington Street,Wellesley Hills,MA 02481