

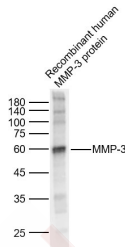
Anti-MMP-3 Polyclonal Antibody

Product Details

Ig Type: IgG
Reactivity: Human
Molecular Weight: Theoretical: 42/52 kDa. Actual: 60 kDa.
Purification: Protein A purified

Applications

Sample:
Lane 1: Recombinant human MMP-3 protein (50ng)
Verified Activity: Primary: Anti-MMP-3 (TMAB-01157) at 1/1000 dilution
Secondary: IRDye800CW Goat Anti-Rabbit IgG at 1/20000 dilution
Predicted band size: 52 kDa
Observed band size: 60 kDa



Application: WB
Recommended WB: 1:500-2000

Properties

Stability & Storage: Store at -20°C or -80°C for 12 months. Avoid repeated freeze-thaw cycles.
Shipping: Shipping with blue ice.

Antigen Details

Immunogen: KLH conjugated synthetic peptide: human MMP3
Antigen Species: Human
Gene ID: 4314
Uniprot ID: P08254
Synonyms: SL-1;MMP3;STMY1;Matrix metalloproteinase-3 (MMP-3);Transin-1;Stromelysin-1
MMPs,MMPs,MMPs,MMP,Thrombosis,MMPs,Other Metabolism Assay,Atherosclerotic proteins
Biology Area: ELISA kits,Cancer proteins ELISA kits,Developmental proteins ELISA kits,Protease inhibitors ELISA kits,MMP

Research Background

Proteins of the matrix metalloproteinase (MMP) family are involved in the breakdown of extracellular matrix in normal physiological processes, such as embryonic development, reproduction, and tissue remodeling, as well as in

A DRUG SCREENING EXPERT

disease processes, such as arthritis and metastasis. Most MMP's are secreted as inactive proproteins which are activated when cleaved by extracellular proteinases. This gene encodes an enzyme which degrades fibronectin, laminin, collagens III, IV, IX, and X, and cartilage proteoglycans. The enzyme is thought to be involved in wound repair, progression of atherosclerosis, and tumor initiation. The gene is part of a cluster of MMP genes which localize to chromosome 11q22.3. [provided by RefSeq, Jul 2008].

Inhibitor · Natural Compounds · Compound Libraries · Recombinant Proteins

This product is for Research Use Only · Not for Human or Veterinary or Therapeutic Use

Tel:781-999-4286 E_mail:info@targetmol.com Address:34 Washington Street,Wellesley Hills,MA 02481