

Anti-MMP-2 Polyclonal Antibody

Product Details

Ig Type:	IgG
Reactivity:	Human (predicted:Mouse,Rat,Pig,Cow,Horse,Rabbit,Sheep)
Molecular Weight:	Theoretical: 72 kDa. Actual: 60 kDa.
Purification:	Protein A purified

Applications

1. Paraformaldehyde-fixed, paraffin embedded (Rat brain); Antigen retrieval by boiling in sodium citrate buffer (pH6.0) for 15 min; Block endogenous peroxidase by 3% hydrogen peroxide for 20 min; Blocking buffer (normal goat serum) at 37°C for 30 min; Antibody incubation with (MMP2) Polyclonal Antibody, Unconjugated (TMAB-01154) at 1:400 overnight at 4°C, followed by operating according to SP Kit (Rabbit) instructions and DAB staining.

2. Blank control (blue line): Hela (blue).

Primary Antibody (green line): Rabbit Anti-MMP2 antibody (TMAB-01154)

Dilution: 1 µg/10⁶ cells;

Isotype Control Antibody (orange line): Rabbit IgG.

Secondary Antibody (white blue line): Goat anti-rabbit IgG-FITC

Dilution: 1 µg/test.

Protocol

The cells were fixed with 80% methanol (5 min at -20°C) and then permeabilized with 0.1% PBS-Tween for 20 min at room temperature. Cells stained with Primary Antibody for 30 min at room temperature. The cells were then incubated in 1 X PBS/2% BSA/10% goat serum to block non-specific protein-protein interactions followed by the antibody for 15 min at room temperature. The secondary antibody used for 40 min at room temperature.

3. Paraformaldehyde-fixed, paraffin embedded (Mouse brain); Antigen retrieval by boiling in sodium citrate buffer (pH6.0) for 15 min; Block endogenous peroxidase by 3% hydrogen peroxide for 20 min; Blocking buffer (normal goat serum) at 37°C for 30 min; Antibody incubation with (MMP2) Polyclonal Antibody, Unconjugated (TMAB-01154) at 1:400 overnight at 4°C, followed by operating according to SP Kit (Rabbit) instructions and DAB staining.

4. Sample:

SY5Y (Human) Cell Lysate at 30 µg

U2os (Human) Cell Lysate at 30 µg

U251 (Human) Cell Lysate at 30 µg

Siha (Human) Cell Lysate at 30 µg

Primary: Anti-MMP-2 (TMAB-01154) at 1/1000 dilution

Secondary: IRDye800CW Goat Anti-Rabbit IgG at 1/20000 dilution

Predicted band size: 62 kDa

Observed band size: 60 kDa

5. Sample:

A431 (Human) Cell Lysate at 30 µg

Mcf-7 (Human) Cell Lysate at 30 µg

Primary: Anti-MMP-2 (TMAB-01154) at 1/300 dilution

Secondary: IRDye800CW Goat Anti-Rabbit IgG at 1/20000 dilution

Predicted band size: 62 kDa

Observed band size: 62 kDa

Verified Activity:

6. Tissue/cell: U-87MG cell; 4% Paraformaldehyde-fixed; Triton X-100 at room temperature for 20 min; Blocking buffer (normal goat serum) at 37°C for 20 min; Antibody incubation with (MMP2) polyclonal Antibody, Unconjugated (TMAB-01154) 1:100, 90 minutes at 37°C; followed by a conjugated Goat Anti-Rabbit IgG antibody at 37°C for 90 minutes, DAPI (blue) was used to stain the cell nucleus.

7. Paraformaldehyde-fixed, paraffin embedded Human Glioma; Antigen retrieval by boiling in sodium citrate buffer (pH6.0) for 15 min; Antibody incubation with MMP2 Polyclonal Antibody, Unconjugated (TMAB-01154) at 1:400 overnight at 4°C, followed by conjugation to the SP Kit (Rabbit) and DAB staining.

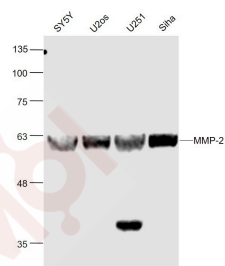
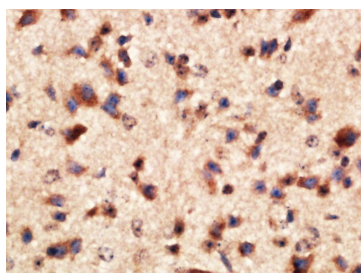
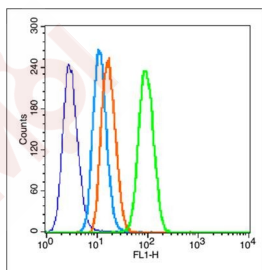
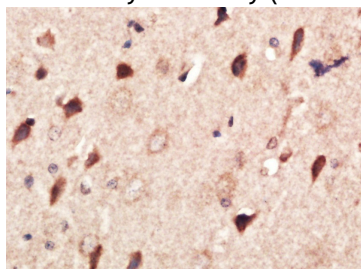
8. Paraformaldehyde-fixed, paraffin embedded Mouse Placenta; Antigen retrieval by boiling in sodium citrate buffer (pH6.0) for 15 min; Antibody incubation with MMP2 Polyclonal Antibody, Unconjugated (TMAB-01154) at 1:400 overnight at 4°C, followed by conjugation to the SP Kit (Rabbit) and DAB staining.

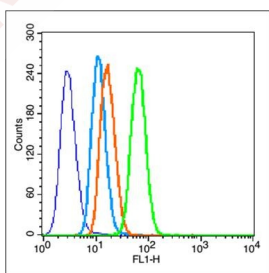
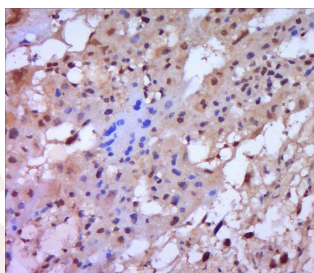
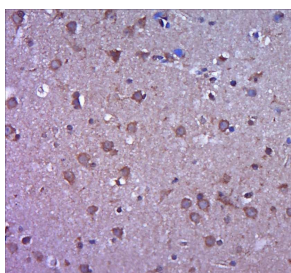
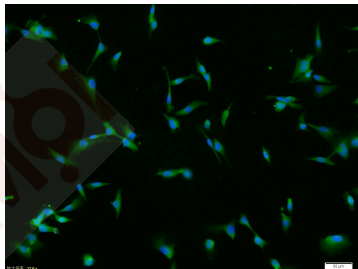
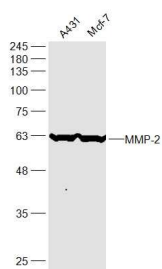
9. Blank control (blue line): Hela (fixed with 80% methanol (5 min at -20°C) and then permeabilized with 0.1% PBS-Tween for 20 min at room temperature).

Primary Antibody (green line): Rabbit Anti-MMP2 antibody (TMAB-01154), Dilution: 1 µg/10⁶ cells;

Isotype Control Antibody (orange line): Rabbit IgG.

Secondary Antibody (white blue line): Goat anti-rabbit IgG-FITC, Dilution: 1 µg/test.





Application: FCM, ICC/IF, IF, IHC-Fr, IHC-P, WB

Recommended FCM=1 µg/Test; ICC/IF=1:100-500; IF=1:200-800; IHC-Fr=1:200-800; IHC-P=1:200-800; WB=1:1000-5000

Properties

Stability & Storage: Store at -20°C or -80°C for 12 months. Avoid repeated freeze-thaw cycles.

Shipping: Shipping with blue ice.

Antigen Details

Immunogen: KLH conjugated synthetic peptide: human MMP2
Antigen Species: Human
Gene ID: 4313
Uniprot ID: P08253
Synonyms: MMP-2;MONA;TBE-1;MMP-II;matrix metalloproteinase 2;CLG4A;CLG4
Biology Area: Response to hypoxia,MMPs,MMPs,MMP,MMPs,Hypoxia,Cancer

Research Background

Proteins of the matrix metalloproteinase (MMP) family are involved in the breakdown of extracellular matrix in normal physiological processes, such as embryonic development, reproduction, and tissue remodeling, as well as in disease processes, such as arthritis and metastasis. Most MMP's are secreted as inactive proproteins which are activated when cleaved by extracellular proteinases. This gene encodes an enzyme which degrades type IV collagen, the major structural component of basement membranes. The enzyme plays a role in endometrial menstrual breakdown, regulation of vascularization and the inflammatory response. Mutations in this gene have been associated with Winchester syndrome and Nodulosis-Arthropathy-Osteolysis (NAO) syndrome. Two transcript variants encoding different isoforms have been found for this gene. [provided by RefSeq].

Inhibitor · Natural Compounds · Compound Libraries · Recombinant Proteins

This product is for Research Use Only · Not for Human or Veterinary or Therapeutic Use

Tel:781-999-4286 E_mail:info@targetmol.com Address:34 Washington Street,Wellesley Hills,MA 02481