

Anti-MMP-13 Polyclonal Antibody 3

Product Details

Ig Type:	IgG
Reactivity:	Human, Mouse, Rat (predicted: Rabbit, Dog)
Molecular Weight:	Theoretical: 52 kDa. Actual: 60 kDa.
Purification:	Protein A purified

Applications

1. Sample:

Lane 1: Raw264.7 (Mouse) Cell Lysate at 30 µg

Lane 2: Jurkat (Human) Cell Lysate at 30 µg

Lane 3: MCF-7 (Human) Cell Lysate at 30 µg

Lane 4: Molt-4 (Human) Cell Lysate at 30 µg

Lane 5: A431 (Human) Cell Lysate at 30 µg

Primary: Anti-MMP13 (TMAB-01153R) at 1/1000 dilution

Secondary: IRDye800CW Goat Anti-Rabbit IgG at 1/20000 dilution

Predicted band size: 60 kDa

Observed band size: 60 kDa

2. Tissue/cell: human gastric carcinoma; 4% Paraformaldehyde-fixed and paraffin-embedded; Antigen retrieval: citrate buffer (0.01M, pH6.0), Boiling bathing for 15 min; Block endogenous peroxidase by 3% Hydrogen peroxide for 30 min; Blocking buffer (normal goat serum) at 37°C for 20 min;

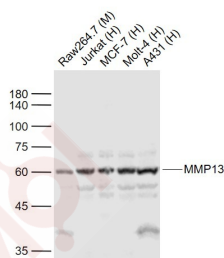
Verified Activity:

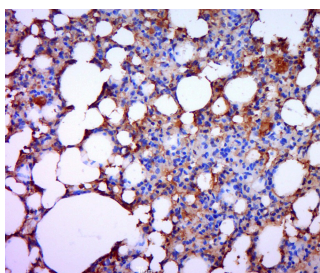
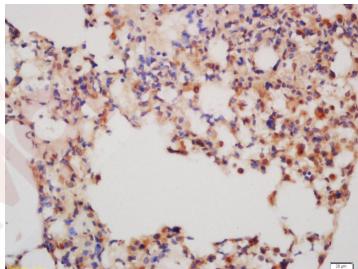
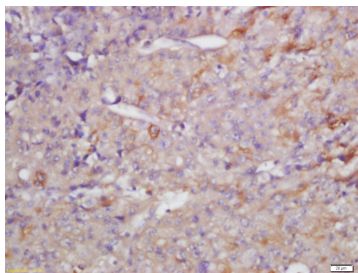
Incubation: Anti-MMP-13 Polyclonal Antibody, Unconjugated (TMAB-01153) 1:200, overnight at 4°C, followed by conjugation to the secondary antibody and DAb staining.

3. Tissue/cell: mouse lung tissue; 4% Paraformaldehyde-fixed and paraffin-embedded; Antigen retrieval: citrate buffer (0.01M, pH6.0), Boiling bathing for 15 min; Block endogenous peroxidase by 3% Hydrogen peroxide for 30 min; Blocking buffer (normal goat serum) at 37°C for 20 min;

Incubation: Anti-MMP-13 Polyclonal Antibody, Unconjugated (TMAB-01153) 1:200, overnight at 4°C, followed by conjugation to the secondary antibody and DAb staining.

4. Paraformaldehyde-fixed, paraffin embedded (rat lung tissue); Antigen retrieval by boiling in sodium citrate buffer (pH6.0) for 15 min; Block endogenous peroxidase by 3% hydrogen peroxide for 20 min; Blocking buffer (normal goat serum) at 37°C for 30 min; Antibody incubation with (MMP13) Polyclonal Antibody, Unconjugated (TMAB-01153) at 1:400 overnight at 4°C, followed by a conjugated secondary for 20 min and DAB staining.





Application: IF,IHC-Fr,IHC-P,WB

Recommended WB: 1:500-2000; IHC-P: 1:100-500; IHC-Fr: 1:100-500; IF: 1:100-500

Properties

Stability & Storage: Store at -20°C or -80°C for 12 months. Avoid repeated freeze-thaw cycles.

Shipping: Shipping with blue ice.

Antigen Details

Immunogen: KLH conjugated synthetic peptide: human MMP13

Antigen Species: Human

Gene ID: 4322

Uniprot ID: P45452

Synonyms: Collagenase 3;MMP13;Matrix metalloproteinase-13 (MMP-13)

Biology Area: MMPs,MMPs,MMPs,MMP,MMPs,Tumor biomarkers ELISA kits,MMP

Research Background

Proteins of the matrix metalloproteinase (MMP) family are involved in the breakdown of extracellular matrix in normal physiological processes, such as embryonic development, reproduction, and tissue remodeling, as well as in disease processes, such as arthritis and metastasis. Most MMP's are secreted as inactive proproteins which are activated when cleaved by extracellular proteinases. The protein encoded by this gene cleaves type II collagen more efficiently than types I and III. It may be involved in articular cartilage turnover and cartilage pathophysiology associated with osteoarthritis. The gene is part of a cluster of MMP genes which localize to chromosome 11q22.3. [provided by RefSeq, Jul 2008].

Inhibitor · Natural Compounds · Compound Libraries · Recombinant Proteins

This product is for Research Use Only · Not for Human or Veterinary or Therapeutic Use

Tel:781-999-4286 E_mail:info@targetmol.com Address:34 Washington Street,Wellesley Hills,MA 02481