

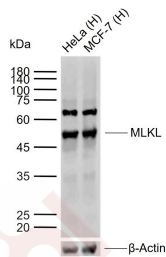
Anti-MLKL Polyclonal Antibody

Product Details

Ig Type: IgG
Reactivity: Human (predicted:Mouse,Rat)
Molecular Weight: Theoretical: 54 kDa. Actual: 50 kDa.
Purification: Protein A purified

Applications

Sample:
 Lane 1: Human HeLa cell lysates
 Lane 2: Human MCF-7 cell lysates
Verified Activity: Primary: Anti-MLKL (TMAB-01149) at 1/1000 dilution
 Secondary: IRDye800CW Goat Anti-Rabbit IgG at 1/20000 dilution
 Predicted band size: 54 kDa
 Observed band size: 50 kDa



Application: IF,IHC-Fr,IHC-P,WB
Recommended: WB: 1:500-2000; IHC-P: 1:100-500; IHC-Fr: 1:400-800; IF: 1:100-500

Properties

Stability & Storage: Store at -20°C or -80°C for 12 months. Avoid repeated freeze-thaw cycles.
Shipping: Shipping with blue ice.

Antigen Details

Immunogen: Recombinant Protein: protein of mouse MLKL
Antigen Species: Mouse
Gene ID: 74568
Uniprot ID: Q9D2Y4
Synonyms: Mixed lineage kinase domain-like protein;Mlkl
Biology Area: Necroptosis,SARS Coronavirus,Other Kinases

Research Background

This gene belongs to the protein kinase superfamily. The encoded protein contains a protein kinase-like domain; however, is thought to be inactive because it lacks several residues required for activity. This protein plays a critical

A DRUG SCREENING EXPERT

role in tumor necrosis factor (TNF)-induced necroptosis, a programmed cell death process, via interaction with receptor-interacting protein 3 (RIP3), which is a key signaling molecule in necroptosis pathway. Inhibitor studies and knockdown of this gene inhibited TNF-induced necrosis. High levels of this protein and RIP3 are associated with inflammatory bowel disease in children. Alternatively spliced transcript variants have been described for this gene. [provided by RefSeq, Sep 2015].

Inhibitor · Natural Compounds · Compound Libraries · Recombinant Proteins

This product is for Research Use Only · Not for Human or Veterinary or Therapeutic Use

Tel:781-999-4286 E_mail:info@targetmol.com Address:34 Washington Street,Wellesley Hills,MA 02481