

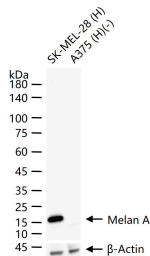
## Anti-MLANA Polyclonal Antibody

### Product Details

Ig Type:	IgG
Reactivity:	Human
Molecular Weight:	Theoretical: 13 kDa. Actual: 17 kDa.
Purification:	Protein A purified

### Applications

Verified Activity: 25 µg total protein per Lane of various lysates probed with Melan A polyclonal antibody, unconjugated (TMAB-01148) at 1:1000 dilution and 4°C overnight incubation. Followed by conjugated secondary antibody incubation at RT for 60 min.



Application:	WB
Recommended	WB: 1:500-2000

### Properties

Stability & Storage: Store at -20°C or -80°C for 12 months. Avoid repeated freeze-thaw cycles.  
Shipping: Shipping with blue ice.

### Antigen Details

Immunogen:	KLH conjugated synthetic peptide: human Melan A
Antigen Species:	Human
Gene ID:	2315
Uniprot ID:	Q16655
Synonyms:	Antigen SK29-AA;Melanoma antigen recognized by T-cells 1;MART-1;MART1;Protein Melan-A; Antigen LB39-AA;MLANA
Biology Area:	Tumor-associated antigens,Tumor Associated

### Research Background

Melan A, a product of the MART-1 gene, is a melanocyte differentiation marker recognized by autologous cytotoxic T lymphocytes. Other melanoma-associated markers recognized by autologous cytotoxic T cells are reported to include MAGE-1, MAGE-3, tyrosinase, gp100, gp75, BAGE-1 and GAGE-1. The analysis of these different molecules and their expression in individual melanomas may be of help in the study of their particular molecular roles in melanocyte differentiation and tumorigenesis.

**Inhibitor · Natural Compounds · Compound Libraries · Recombinant Proteins**

This product is for Research Use Only · Not for Human or Veterinary or Therapeutic Use

Tel:781-999-4286 E\_mail:info@targetmol.com Address:34 Washington Street,Wellesley Hills,MA 02481