

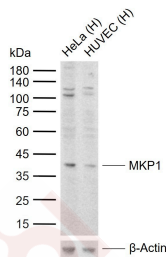
Anti-MKP1 Polyclonal Antibody

Product Details

Ig Type: IgG
 Reactivity: Human (predicted:Mouse,Rat,Dog,Cow,Horse,Rabbit,Sheep)
 Molecular Weight: Theoretical: 39 kDa. Actual: 39 kDa.
 Purification: Protein A purified

Applications

Sample:
 Lane 1: Human HeLa cell lysates
 Lane 2: Human HUVEC cell lysates
 Verified Activity: Primary: Anti-MKP1 (TMAB-01146) at 1/1000 dilution
 Secondary: IRDye800CW Goat Anti-Rabbit IgG at 1/20000 dilution
 Predicted band size: 39 kDa
 Observed band size: 39 kDa



Application: WB
 Recommended WB: 1:500-2000

Properties

Stability & Storage: Store at -20°C or -80°C for 12 months. Avoid repeated freeze-thaw cycles.
 Shipping: Shipping with blue ice.

Antigen Details

Immunogen: KLH conjugated synthetic peptide: human DUSP1
 Antigen Species: Human
 Gene ID: 1843
 Uniprot ID: P28562
 Synonyms: HVH1;VH 1;VH1;CL 100;Dual specificity protein phosphatase 1;DUSP1;Mkp1;MAP kinase phosphatase 1;EC 3.1.3.48;HVH 1;Dual specificity protein phosphatase hVH1;EC 3.1.3.16;3ch134;CL100;DUSP-1;Mitogen activated protein kinase phosphatase 1;PTPN 10;Serine/threonine specific protein phosphatase;Ptpn16;Dual Specificity Phosphatase 1;Protein tyrosine phosphatase CL100;MKP 1;PTPN10
 Biology Area: Ser / Thr Phosphatases,Tyrosine Phosphatases

Research Background

The expression of DUSP1 gene is induced in human skin fibroblasts by oxidative/heat stress and growth factors. It specifies a protein with structural features similar to members of the non-receptor-type protein-tyrosine phosphatase family, and which has significant amino-acid sequence similarity to a Tyr/Ser-protein phosphatase encoded by the late gene H1 of vaccinia virus. The bacterially expressed and purified DUSP1 protein has intrinsic phosphatase activity, and specifically inactivates mitogen-activated protein (MAP) kinase in vitro by the concomitant dephosphorylation of both its phosphothreonine and phosphotyrosine residues.

Inhibitor · Natural Compounds · Compound Libraries · Recombinant Proteins

This product is for Research Use Only · Not for Human or Veterinary or Therapeutic Use

Tel:781-999-4286 E_mail:info@targetmol.com Address:34 Washington Street,Wellesley Hills,MA 02481