

## Anti-MKI67 Polyclonal Antibody

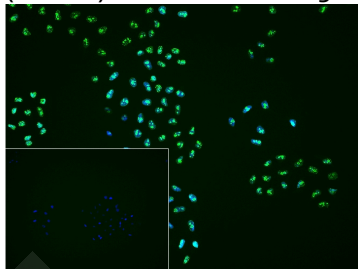
### Product Details

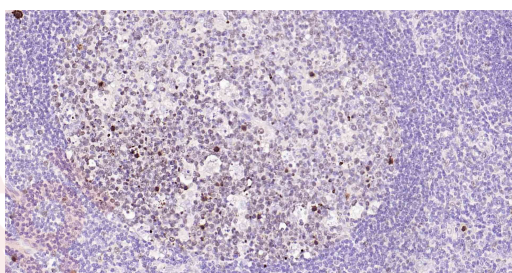
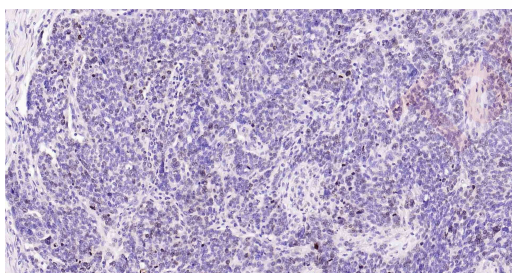
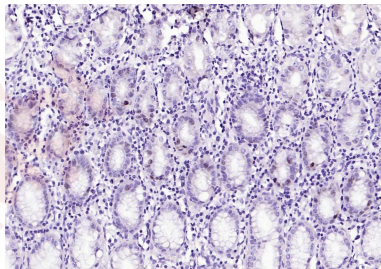
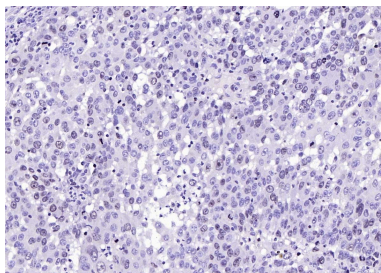
Ig Type:	IgG
Reactivity:	Human,Mouse,Rat
Molecular Weight:	Theoretical: 358 kDa. Actual: 320/359? kDa.
Purification:	Protein A purified

### Applications

#### Verified Activity:

1. 4% Paraformaldehyde-fixed Hela (H) cell; Triton X-100 at RT for 20 min; Antibody incubation with (Ki-67) polyclonal Antibody, unconjugated (TMAB-01144) 1:100, 90 min at 37°C; followed by conjugated Goat Anti-Rabbit IgG antibody (green) at 37°C for 90 min, DAPI (blue) was used to stain the cell nucleus. PBS instead of the primary antibody was used as the blank control.
2. Paraformaldehyde-fixed, paraffin embedded (human lung carcinoma); Antigen retrieval by boiling in sodium citrate buffer (pH6.0) for 15 min; Block endogenous peroxidase by 3% hydrogen peroxide for 20 min; Blocking buffer (normal goat serum) at 37°C for 30 min; Antibody incubation with (Ki-67) Polyclonal Antibody, Unconjugated (TMAB-01144) at 1:200 overnight at 4°C, followed by operating according to SP Kit (Rabbit) instructions and DAB staining.
3. Paraformaldehyde-fixed, paraffin embedded (Human stomach); Antigen retrieval by boiling in sodium citrate buffer (pH6.0) for 15 min; Block endogenous peroxidase by 3% hydrogen peroxide for 20 min; Blocking buffer (normal goat serum) at 37°C for 30 min; Antibody incubation with (Ki-67) Polyclonal Antibody, Unconjugated (TMAB-01144) at 1:200 overnight at 4°C, followed by operating according to SP Kit (Rabbit) instructions and DAB staining.
4. Paraformaldehyde-fixed, paraffin embedded Human ovarian serous carcinoma; Antigen retrieval by boiling in sodium citrate buffer (pH6.0) for 15 min; Antibody incubation with Ki-67 Polyclonal Antibody, Unconjugated (TMAB-01144) at 1:200 overnight at 4°C, followed by conjugation to the SP Kit (Rabbit) and DAB staining.
5. Paraformaldehyde-fixed, paraffin embedded Human Tonsil; Antigen retrieval by boiling in sodium citrate buffer (pH6.0) for 15 min; Antibody incubation with Ki-67 Polyclonal Antibody, Unconjugated (TMAB-01144) at 1:200 overnight at 4°C, followed by conjugation to the SP Kit (Rabbit) and DAB staining.





Application: FCM,ICC/IF,IF,IHC-Fr,IHC-P,WB

Recommended FCM=1 µg/Test; ICC/IF=1:100-500; IF=1:200-800; IHC-Fr=1:200-800; IHC-P=1:200-800; WB=1:500-2000

### Properties

Stability & Storage: Store at -20°C or -80°C for 12 months. Avoid repeated freeze-thaw cycles.

Shipping: Shipping with blue ice.

### Antigen Details

Immunogen: KLH conjugated synthetic peptide: human Ki67

Antigen Species: Human

Gene ID: 4288

Uniprot ID: P46013

Synonyms: MKI67;Proliferation marker protein Ki-67;Antigen identified by monoclonal antibody Ki-67 (Antigen KI-67;Antigen Ki67)

Biology Area: Cell division,Tumor biomarkers,Markers,Soma marker,Neurogenesis,Replication

### Research Background

Ki67 antigen is the prototypic cell cycle related nuclear protein, expressed by proliferating cells in all phases of the active cell cycle (G1, S, G2 and M phase). It is absent in resting (G0) cells. Ki67 antibodies are useful in establishing the cell growing fraction in neoplasms (immunohistochemically quantified by determining the number of Ki67 positive cells among the total number of resting cells = Ki67 index). In neoplastic tissues the prognostic value is comparable to the tritiated thymidine labelling index. The correlation between low Ki67 index and histologically low grade tumours is strong. Ki67 is routinely used as a neuronal marker of cell cycling and proliferation.

**Inhibitor · Natural Compounds · Compound Libraries · Recombinant Proteins**

This product is for Research Use Only· Not for Human or Veterinary or Therapeutic Use

Tel:781-999-4286 E\_mail:info@targetmol.com Address:34 Washington Street,Wellesley Hills,MA 02481