

Anti-MKI67 Antibody (3H14)

Product Details

Ig Type:	IgG
Reactivity:	Human,Mouse,Rat
Molecular Weight:	Theoretical: 358 kDa.
Clone:	3H14
Purification:	Protein A purified

Applications

1. Paraformaldehyde-fixed, paraffin embedded (rat spleen); Antigen retrieval by boiling in sodium EDTA buffer (Ph9.0) for 15 min; Block endogenous peroxidase by 3% hydrogen peroxide for 20 min; Blocking buffer (normal goat serum) at 37°C for 30 min; Incubation with (Ki67) Monoclonal Antibody, Unconjugated (TMAB-01142) at 1:200 overnight at 4°C, followed by operating according to SP Kit (Rabbit) instructions and DAB staining.

2. Paraformaldehyde-fixed, paraffin embedded (mouse thymus); Antigen retrieval by boiling in sodium EDTA buffer (Ph9.0) for 15 min; Block endogenous peroxidase by 3% hydrogen peroxide for 20 min; Blocking buffer (normal goat serum) at 37°C for 30 min; Incubation with (Ki67) Monoclonal Antibody, Unconjugated (TMAB-01142) at 1:200 overnight at 4°C, followed by operating according to SP Kit (Rabbit) instructions and DAB staining.

3. Blank control (black line): Hela.

Primary Antibody (green line): Rabbit Anti-Ki67 antibody (TMAB-01142)

Dilution: 0.5 µg/Test;

Secondary Antibody (white blue line): Goat anti-rabbit IgG-FITC

Dilution: 0.5 µg/Test.

Isotype control (orange line): Normal Rabbit IgG Protocol

Verified Activity:

The cells were fixed with 4% PFA (10 min at room temperature) and then permeabilized with 90% ice-cold methanol for 20 min at -20°C, The cells were then incubated in 5% BSA to block non-specific protein-protein interactions for 30 min at room temperature. Cells stained with Primary Antibody for 30 min at room temperature. The secondary antibody used for 40 min at room temperature.

4. 4% Paraformaldehyde-fixed Hela (H) cell; Triton X-100 at RT for 20 min; Antibody incubation with (Ki-67) monoclonal Antibody, unconjugated (TMAB-01142) 1:200, 90 min at 37°C; followed by conjugated Goat Anti-Rabbit IgG antibody (green) at 37°C for 90 min, DAPI (blue) was used to stain the cell nucleus. PBS instead of the primary antibody was used as the blank control.

5. (Negative control) Paraformaldehyde-fixed, paraffin embedded Mouse Heart; Antigen retrieval by boiling in sodium citrate buffer (pH6.0) for 15 min; Antibody incubation with Ki67 Monoclonal Antibody, Unconjugated (TMAB-01142) at 1:500 overnight at 4°C, followed by conjugation to the SP Kit (Rabbit) and DAB staining.

6. (Negative control) Paraformaldehyde-fixed, paraffin embedded Rat Heart; Antigen retrieval by boiling in sodium citrate buffer (pH6.0) for 15 min; Antibody incubation with Ki67 Monoclonal Antibody, Unconjugated (TMAB-01142) at 1:500 overnight at 4°C, followed by conjugation to the SP Kit (Rabbit) and DAB staining.

7. (Negative control) Paraformaldehyde-fixed, paraffin embedded Human Heart; Antigen retrieval by boiling in sodium citrate buffer (pH6.0) for 15 min; Antibody incubation with Ki67

Monoclonal Antibody, Unconjugated (TMAB-01142) at 1:500 overnight at 4°C, followed by conjugation to the SP Kit (Rabbit) and DAB staining.

8. Paraformaldehyde-fixed, paraffin embedded Rat Spleen; Antigen retrieval by boiling in sodium citrate buffer (pH6.0) for 15 min; Antibody incubation with Ki67 Monoclonal Antibody, Unconjugated (TMAB-01142) at 1:500 overnight at 4°C, followed by conjugation to the SP Kit (Rabbit) and DAB staining.

9. Paraformaldehyde-fixed, paraffin embedded Human Colon Cancer; Antigen retrieval by boiling in sodium citrate buffer (pH6.0) for 15 min; Antibody incubation with Ki67 Monoclonal Antibody, Unconjugated (TMAB-01142) at 1:500 overnight at 4°C, followed by conjugation to the SP Kit (Rabbit) and DAB staining.

10. Paraformaldehyde-fixed, paraffin embedded Human Ovarian Cancer; Antigen retrieval by boiling in sodium citrate buffer (pH6.0) for 15 min; Antibody incubation with Ki67 Monoclonal Antibody, Unconjugated (TMAB-01142) at 1:500 overnight at 4°C, followed by conjugation to the SP Kit (Rabbit) and DAB staining.

11. Paraformaldehyde-fixed, paraffin embedded Human Tonsil; Antigen retrieval by boiling in sodium citrate buffer (pH6.0) for 15 min; Antibody incubation with Ki67 Monoclonal Antibody, Unconjugated (TMAB-01142) at 1:500 overnight at 4°C, followed by conjugation to the SP Kit (Rabbit) and DAB staining.

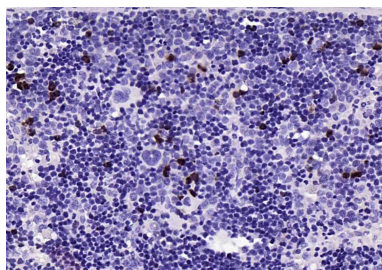
12. Paraformaldehyde-fixed, paraffin embedded Human Colon; Antigen retrieval by boiling in sodium citrate buffer (pH6.0) for 15 min; Antibody incubation with Ki67 Monoclonal Antibody, Unconjugated (TMAB-01142) at 1:500 overnight at 4°C, followed by conjugation to the SP Kit (Rabbit) and DAB staining.

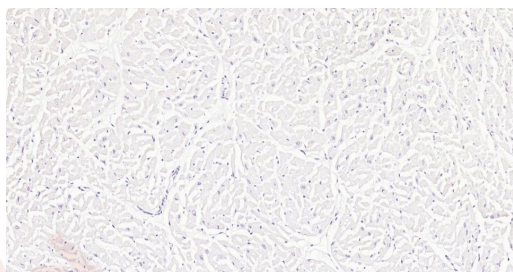
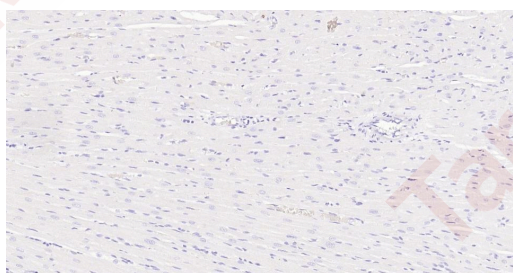
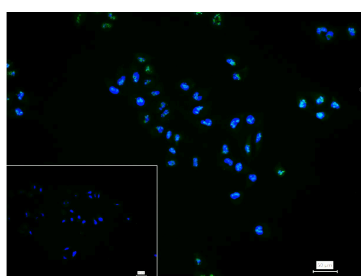
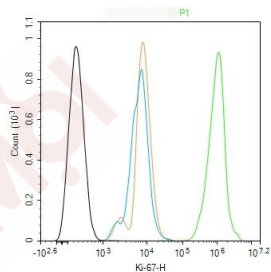
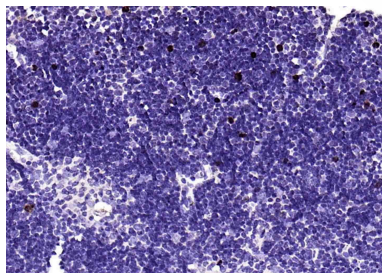
13. Paraformaldehyde-fixed, paraffin embedded Human Gastric Cancer; Antigen retrieval by boiling in sodium citrate buffer (pH6.0) for 15 min; Antibody incubation with Ki67 Monoclonal Antibody, Unconjugated (TMAB-01142) at 1:500 overnight at 4°C, followed by conjugation to the SP Kit (Rabbit) and DAB staining.

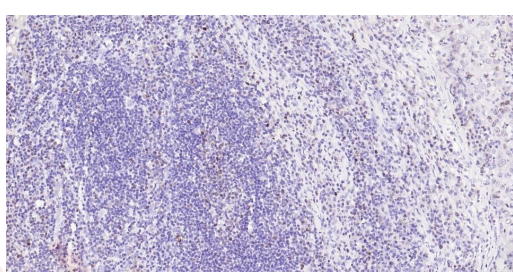
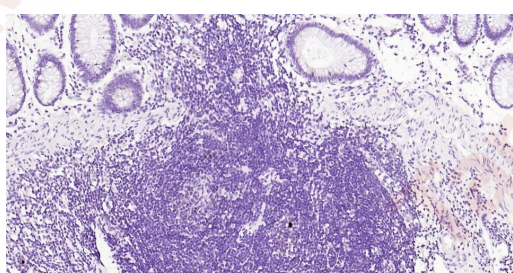
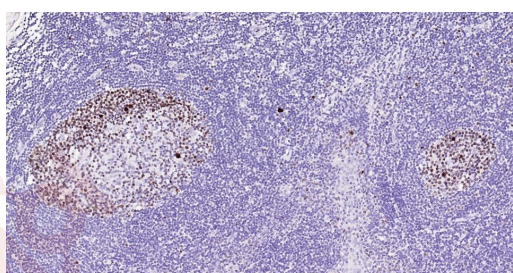
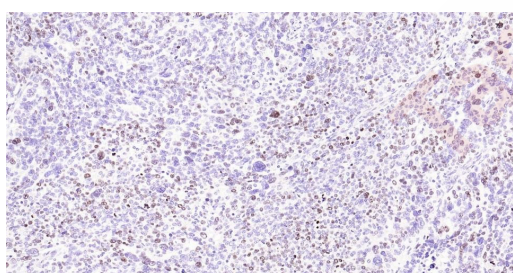
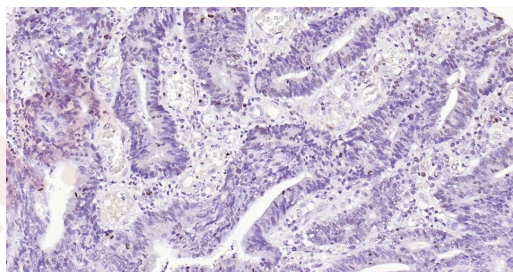
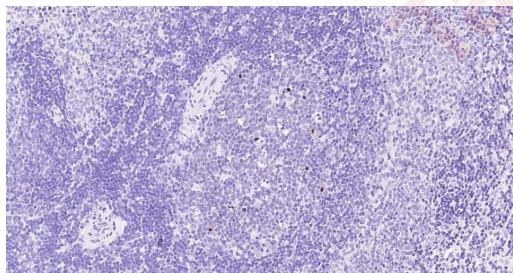
14. Paraformaldehyde-fixed, paraffin embedded Rat Colon; Antigen retrieval by boiling in sodium citrate buffer (pH6.0) for 15 min; Antibody incubation with Ki67 Monoclonal Antibody, Unconjugated (TMAB-01142) at 1:200 overnight at 4°C. Followed by conjugated Goat Anti-Rabbit IgG antibody (green), DAPI (blue) was used to stain the cell nucleus.

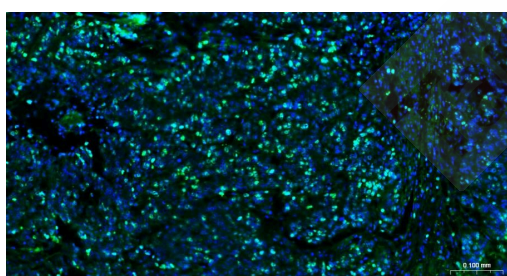
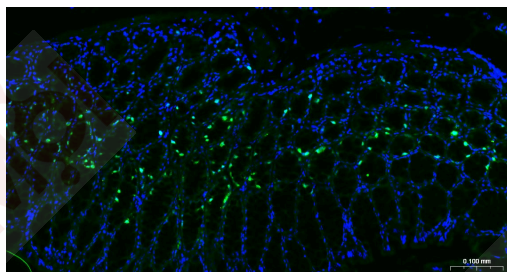
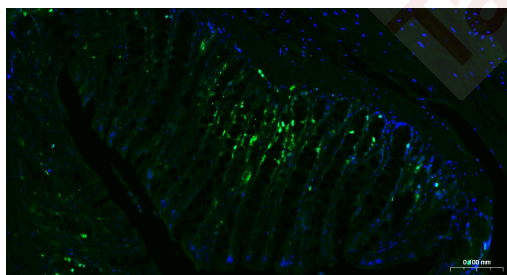
15. Paraformaldehyde-fixed, paraffin embedded Mouse Colon; Antigen retrieval by boiling in sodium citrate buffer (pH6.0) for 15 min; Antibody incubation with Ki67 Monoclonal Antibody, Unconjugated (TMAB-01142) at 1:200 overnight at 4°C. Followed by conjugated Goat Anti-Rabbit IgG antibody (green), DAPI (blue) was used to stain the cell nucleus.

16. Paraformaldehyde-fixed, paraffin embedded Human Esophageal Cancer; Antigen retrieval by boiling in sodium citrate buffer (pH6.0) for 15 min; Antibody incubation with Ki67 Monoclonal Antibody, Unconjugated (TMAB-01142) at 1:200 overnight at 4°C. Followed by conjugated Goat Anti-Rabbit IgG antibody (green), DAPI (blue) was used to stain the cell nucleus.









Application: FCM,ICC/IF,IF,IHC-Fr,IHC-P

Recommended FCM=1 µg/Test; ICC/IF=1:100-500; IF=1:100-500; IHC-Fr=1:100-500; IHC-P=1:100-500

Properties

Stability & Storage: Store at -20°C or -80°C for 12 months. Avoid repeated freeze-thaw cycles.

Shipping: Shipping with blue ice.

Antigen Details

Immunogen: KLH conjugated synthetic peptide: human Ki67

Antigen Species: Human

Gene ID: 4288

Uniprot ID: P46013

Synonyms: MKI67;Proliferation marker protein Ki-67;Antigen identified by monoclonal antibody Ki-67 (Antigen KI-67;Antigen Ki67)

Biology Area: Cell division,Tumor biomarkers,Markers,Soma marker,Neurogenesis,Replication

Research Background

Ki67 antigen is the prototypic cell cycle related nuclear protein, expressed by proliferating cells in all phases of the active cell cycle (G1, S, G2 and M phase). It is absent in resting (G0) cells. Ki67 antibodies are useful in establishing the cell growing fraction in neoplasms (immunohistochemically quantified by determining the number of Ki67 positive cells among the total number of resting cells = Ki67 index). In neoplastic tissues the prognostic value is comparable to the tritiated thymidine labelling index. The correlation between low Ki67 index and histologically low grade tumours is strong. Ki67 is routinely used as a neuronal marker of cell cycling and proliferation.

Inhibitor · Natural Compounds · Compound Libraries · Recombinant Proteins

This product is for Research Use Only · Not for Human or Veterinary or Therapeutic Use

Tel:781-999-4286 E_mail:info@targetmol.com Address:34 Washington Street,Wellesley Hills,MA 02481