

## Anti-MKI67 Antibody (3A821)

### Product Details

Ig Type:	IgG
Reactivity:	Human,Mouse,Rat
Molecular Weight:	Theoretical: 358 kDa. Actual: Multiple kDa.
Clone:	3A821
Purification:	Protein A purified

### Applications

1. Paraformaldehyde-fixed, paraffin embedded Mouse Spleen; Antigen retrieval by boiling in sodium citrate buffer (pH6.0) for 15 min; Antibody incubation with Ki67Monoclonal Antibody, Unconjugated (TMAB-01141) at 1:500 overnight at 4°C, followed by conjugation to the SP Kit (Rabbit) and DAB staining.

PBS instead of the primary antibody was used as the blank control.

2. Paraformaldehyde-fixed, paraffin embedded Mouse Colon; Antigen retrieval by boiling in sodium citrate buffer (pH6.0) for 15 min; Antibody incubation with Ki67Monoclonal Antibody, Unconjugated (TMAB-01141) at 1:500 overnight at 4°C, followed by conjugation to the SP Kit (Rabbit) and DAB staining.

3. Paraformaldehyde-fixed, paraffin embedded Rat Liver; Antigen retrieval by boiling in sodium citrate buffer (pH6.0) for 15 min; Antibody incubation with Ki67Monoclonal Antibody, Unconjugated (TMAB-01141) at 1:500 overnight at 4°C, followed by conjugation to the SP Kit (Rabbit) and DAB staining.

4. Paraformaldehyde-fixed, paraffin embedded Rat Colon; Antigen retrieval by boiling in sodium citrate buffer (pH6.0) for 15 min; Antibody incubation with Ki67Monoclonal Antibody, Unconjugated (TMAB-01141) at 1:500 overnight at 4°C, followed by conjugation to the SP Kit (Rabbit) and DAB staining.

#### Verified Activity:

5. Paraformaldehyde-fixed, paraffin embedded Rat Skin; Antigen retrieval by boiling in sodium citrate buffer (pH6.0) for 15 min; Antibody incubation with Ki67Monoclonal Antibody, Unconjugated (TMAB-01141) at 1:500 overnight at 4°C, followed by conjugation to the SP Kit (Rabbit) and DAB staining.

6. Paraformaldehyde-fixed, paraffin embedded Rat Spleen; Antigen retrieval by boiling in sodium citrate buffer (pH6.0) for 15 min; Antibody incubation with Ki67Monoclonal Antibody, Unconjugated (TMAB-01141) at 1:500 overnight at 4°C, followed by conjugation to the SP Kit (Rabbit) and DAB staining.

7. Paraformaldehyde-fixed, paraffin embedded Human Colon; Antigen retrieval by boiling in sodium citrate buffer (pH6.0) for 15 min; Antibody incubation with Ki67Monoclonal Antibody, Unconjugated (TMAB-01141) at 1:500 overnight at 4°C, followed by conjugation to the SP Kit (Rabbit) and DAB staining.

8. Paraformaldehyde-fixed, paraffin embedded Human Spleen; Antigen retrieval by boiling in sodium citrate buffer (pH6.0) for 15 min; Antibody incubation with Ki67Monoclonal Antibody, Unconjugated (TMAB-01141) at 1:500 overnight at 4°C, followed by conjugation to the SP Kit (Rabbit) and DAB staining.

9. Paraformaldehyde-fixed, paraffin embedded Human Colon Cancer; Antigen retrieval by boiling in sodium citrate buffer (pH6.0) for 15 min; Antibody incubation with Ki67Monoclonal Antibody, Unconjugated (TMAB-01141) at 1:500 overnight at 4°C, followed by conjugation to

the SP Kit (Rabbit) and DAB staining.

10. Paraformaldehyde-fixed, paraffin embedded Human Ovarian Cancer; Antigen retrieval by boiling in sodium citrate buffer (pH6.0) for 15 min; Antibody incubation with Ki67 Monoclonal Antibody, Unconjugated (TMAB-01141) at 1:500 overnight at 4°C, followed by conjugation to the SP Kit (Rabbit) and DAB staining.

11. Paraformaldehyde-fixed, paraffin embedded Human Tonsil; Antigen retrieval by boiling in sodium citrate buffer (pH6.0) for 15 min; Antibody incubation with Ki67 Monoclonal Antibody, Unconjugated (TMAB-01141) at 1:500 overnight at 4°C, followed by conjugation to the SP Kit (Rabbit) and DAB staining.

12. Paraformaldehyde-fixed, paraffin embedded Human Gastric Cancer; Antigen retrieval by boiling in sodium citrate buffer (pH6.0) for 15 min; Antibody incubation with Ki67 Monoclonal Antibody, Unconjugated (TMAB-01141) at 1:500 overnight at 4°C, followed by conjugation to the SP Kit (Rabbit) and DAB staining.

13. (Negative control) Paraformaldehyde-fixed, paraffin embedded Rat Heart; Antigen retrieval by boiling in sodium citrate buffer (pH6.0) for 15 min; Antibody incubation with Ki67 Monoclonal Antibody, Unconjugated (TMAB-01141) at 1:500 overnight at 4°C, followed by conjugation to the SP Kit (Rabbit) and DAB staining.

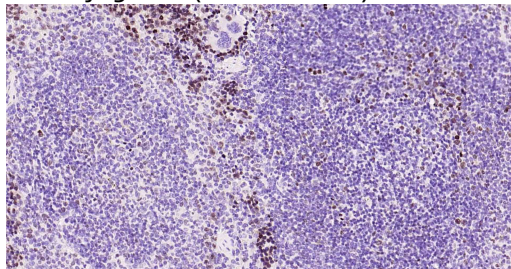
14. (Negative control) Paraformaldehyde-fixed, paraffin embedded Mouse Heart; Antigen retrieval by boiling in sodium citrate buffer (pH6.0) for 15 min; Antibody incubation with Ki67 Monoclonal Antibody, Unconjugated (TMAB-01141) at 1:500 overnight at 4°C, followed by conjugation to the SP Kit (Rabbit) and DAB staining.

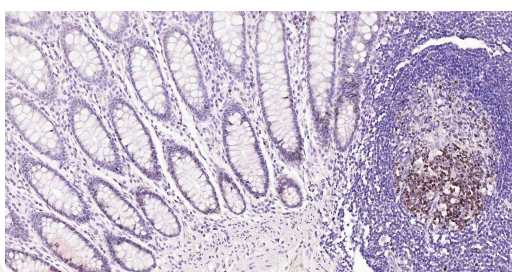
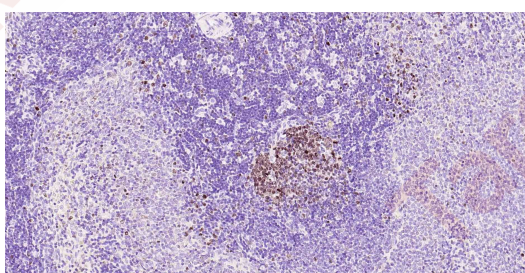
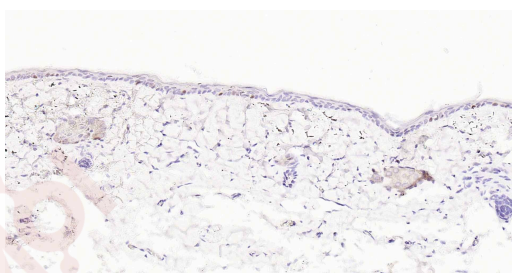
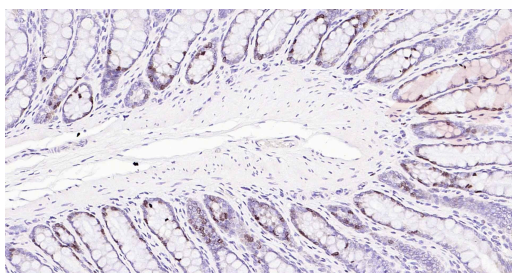
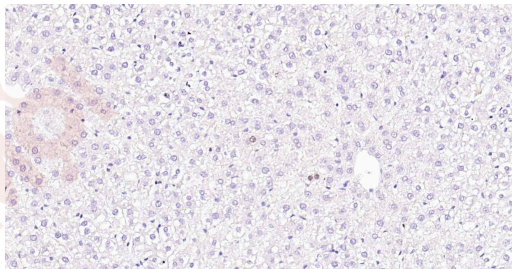
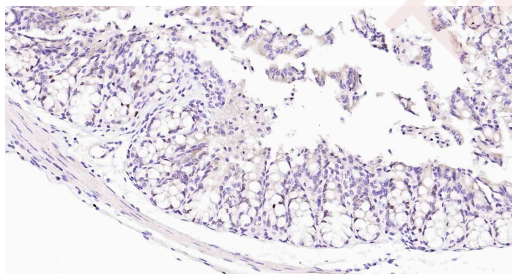
15. 4% Paraformaldehyde-fixed Hela (H) cell; Triton X-100 at RT for 20 min; Antibody incubation with (Ki-67) monoclonal Antibody, unconjugated (TMAB-01141) 1:200, 90 min at 37°C; followed by conjugated Goat Anti-Rabbit IgG antibody (green) at 37°C for 90 min, DAPI (blue) was used to stain the cell nucleus. PBS instead of the primary antibody was used as the blank control.

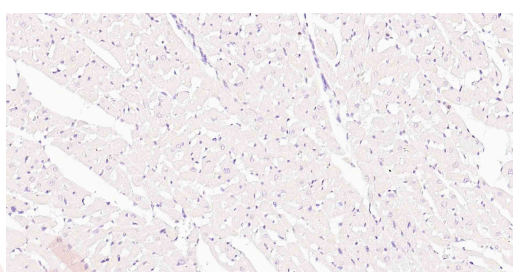
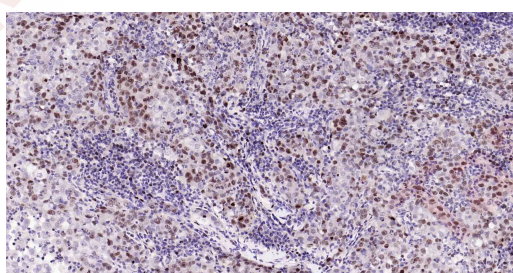
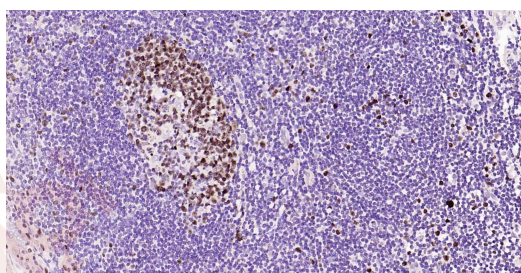
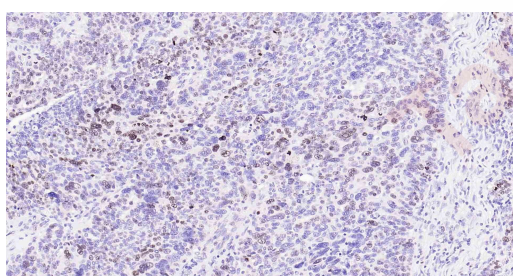
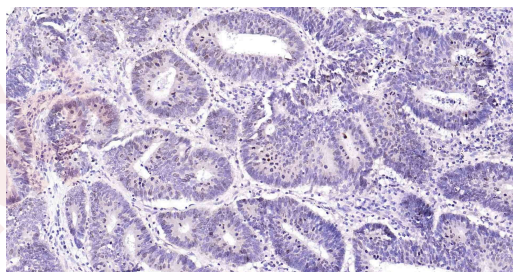
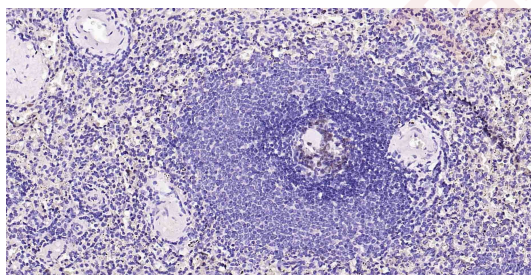
16. Paraformaldehyde-fixed, paraffin embedded Rat Colon; Antigen retrieval by boiling in sodium citrate buffer (pH6.0) for 15 min; Antibody incubation with Ki67 Monoclonal Antibody, Unconjugated (TMAB-01141) at 1:200 overnight at 4°C. Followed by conjugated Goat Anti-Rabbit IgG antibody (green), DAPI (blue) was used to stain the cell nucleus.

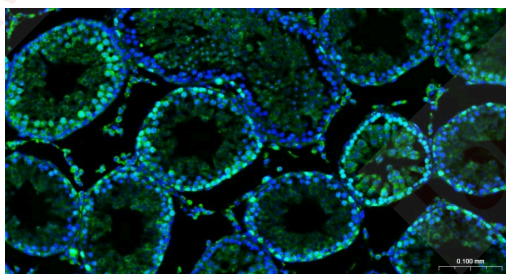
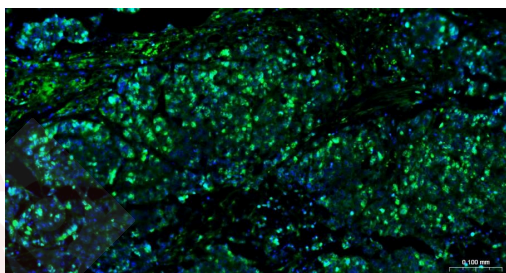
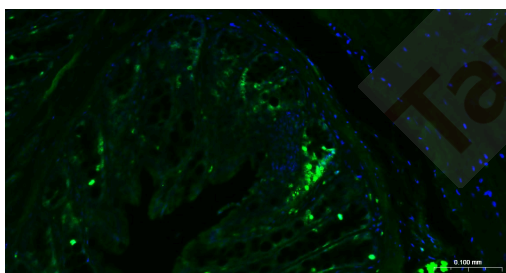
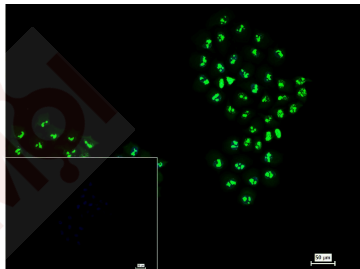
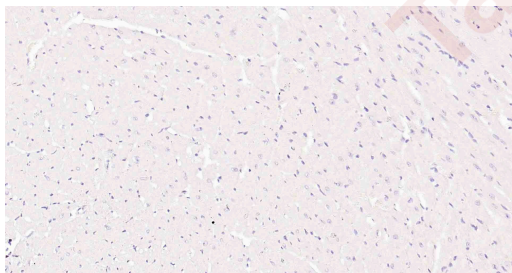
17. Paraformaldehyde-fixed, paraffin embedded Human Esophageal Cancer; Antigen retrieval by boiling in sodium citrate buffer (pH6.0) for 15 min; Antibody incubation with Ki67 Monoclonal Antibody, Unconjugated (TMAB-01141) at 1:200 overnight at 4°C. Followed by conjugated Goat Anti-Rabbit IgG antibody (green), DAPI (blue) was used to stain the cell nucleus.

18. Paraformaldehyde-fixed, paraffin embedded Rat Testicles; Antigen retrieval by boiling in sodium citrate buffer (pH6.0) for 15 min; Antibody incubation with Ki67 Polyclonal Antibody, Unconjugated (TMAB-01141) at 1:200 overnight at 4°C. Followed by conjugated Goat Anti-









Application: FCM, ICC/IF, IF, IHC-Fr, IHC-P, WB

Recommended IHC-P=1:200-1000, IHC-F=1:200-1000, ICC/IF=1:200-1000, IF=1:200-1000, WB=1:1000-5000, Flow-Cyt=1:50-100

### Properties

Stability & Storage: Store at -20°C or -80°C for 12 months. Avoid repeated freeze-thaw cycles.

Shipping: Shipping with blue ice.

### Antigen Details

Immunogen:	KLH conjugated synthetic peptide: human Ki67
Antigen Species:	Human
Gene ID:	4288
Uniprot ID:	P46013
Synonyms:	Antigen identified by monoclonal antibody Ki-67 (Antigen KI-67;Antigen Ki67);MKI67; Proliferation marker protein Ki-67
Biology Area:	Cell division,Tumor biomarkers,Markers,Soma marker,Neurogenesis,Replication

---

### Research Background

Ki67 antigen is the prototypic cell cycle related nuclear protein, expressed by proliferating cells in all phases of the active cell cycle (G1, S, G2 and M phase). It is absent in resting (G0) cells. Ki67 antibodies are useful in establishing the cell growing fraction in neoplasms (immunohistochemically quantified by determining the number of Ki67 positive cells among the total number of resting cells = Ki67 index). In neoplastic tissues the prognostic value is comparable to the tritiated thymidine labelling index. The correlation between low Ki67 index and histologically low grade tumours is strong. Ki67 is routinely used as a neuronal marker of cell cycling and proliferation.

**Inhibitor · Natural Compounds · Compound Libraries · Recombinant Proteins**

This product is for Research Use Only· Not for Human or Veterinary or Therapeutic Use

Tel:781-999-4286 E\_mail:info@targetmol.com Address:34 Washington Street,Wellesley Hills,MA 02481