

## Anti-Mitoferrin 2/SLC25A28 Polyclonal Antibody

### Product Details

Ig Type:	IgG
Reactivity:	Mouse,Rat (predicted:Human,Dog,Pig,Cow,Sheep)
Molecular Weight:	Theoretical: 39 kDa. Actual: 37 kDa.
Purification:	Protein A purified

### Applications

#### Sample:

Lane 1: Liver (Mouse) Lysate at 40  $\mu$ g

Lane 2: Liver (Rat) Lysate at 40  $\mu$ g

Lane 3: Heart (Rat) Lysate at 40  $\mu$ g

#### Verified Activity:

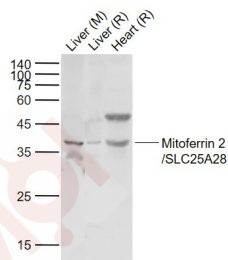
##### Primary:

Anti-Mitoferrin 2/SLC25A28 (TMAB-01140) at 1/1000 dilution

Secondary: IRDye800CW Goat Anti-Rabbit IgG at 1/20000 dilution

Predicted band size: 39 kDa

Observed band size: 37 kDa



Application: WB

Recommended WB: 1:500-2000

### Properties

Stability & Storage: Store at -20°C or -80°C for 12 months. Avoid repeated freeze-thaw cycles.

Shipping: Shipping with blue ice.

### Antigen Details

Immunogen: KLH conjugated synthetic peptide: human Mitoferrin 2

Antigen Species: Human

Gene ID: 81894

Uniprot ID: Q96A46

Synonyms: MRS4L;Mitoferrin 2;MFRN2;Mitochondrial RNA splicing protein 3/4;Putative mitochondrial solute carrier;MRS3/4;Mitochondrial iron transporter 2;Mitoferrin2;NPD016

### Research Background

Mitoferrin 2, also known as MRS3/4 (mitochondrial RNA-splicing protein 3/4 homolog), mitochondrial iron

## A DRUG SCREENING EXPERT

---

transporter 2, NPD016, MRS4L or SLC25A28 (solute carrier family 25 member 28), is a 364 amino acid multi-pass membrane protein of the mitochondrial inner membrane that mediates iron uptake. Mitoferrin 2 is thought to play a role in heme synthesis of hemoproteins and iron-sulfur cluster assembly. Ubiquitously expressed, Mitoferrin 2 is found at high levels in skeletal muscle, heart, placenta, kidney, lung, liver, brain and pancreas. Mitoferrin 2 is a member of the mitochondrial carrier family and undergoes alternative splicing events to produce four isoforms. Mitoferrin 2 contains three solcar repeats and is encoded by a gene that maps to human chromosome 10q24.2.

**Inhibitor · Natural Compounds · Compound Libraries · Recombinant Proteins**

This product is for Research Use Only · Not for Human or Veterinary or Therapeutic Use

Tel:781-999-4286 E\_mail:info@targetmol.com Address:34 Washington Street,Wellesley Hills,MA 02481