

Anti-MITF Polyclonal Antibody

Product Details

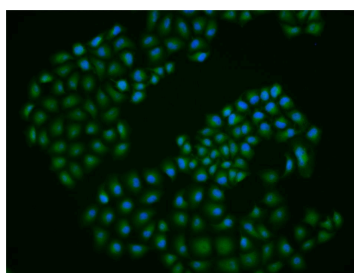
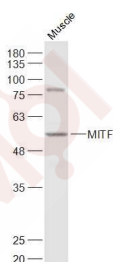
Ig Type:	IgG
Reactivity:	Human,Mouse (predicted:Rat,Chicken,Dog,Cow,Horse,Rabbit)
Molecular Weight:	Theoretical: 59 kDa. Actual: 57 kDa.
Purification:	Protein A purified

Applications

1. Sample:
Muscle (Mouse) Lysate at 40 µg
Primary: Anti-MITF (TMAB-01139) at 1/1000 dilution
Secondary: IRDye800CW Goat Anti-Rabbit IgG at 1/20000 dilution
Predicted band size: 59 kDa

Verified Activity: Observed band size: 57 kDa

2. Hela cell; 4% Paraformaldehyde-fixed; Triton X-100 at room temperature for 20 min; Blocking buffer (normal goat serum) at 37°C for 20 min; Antibody incubation with (MITF) polyclonal Antibody, Unconjugated (TMAB-01139) 1:25, 90 minutes at 37°C; followed by a conjugated Goat Anti-Rabbit IgG antibody at 37°C for 90 minutes, DAPI (blue) was used to stain the cell nucleus.



Application:	ICC/IF,WB
Recommended	WB: 1:500-2000; ICC/IF: 1:50-200

Properties

Stability & Storage: Store at -20°C or -80°C for 12 months. Avoid repeated freeze-thaw cycles.

Shipping: Shipping with blue ice.

Antigen Details

Immunogen: KLH conjugated synthetic peptide: human MITF

Antigen Species: Human

Gene ID: 4286

Uniprot ID: O75030

Synonyms: BHLHE32;COMMAD;Class E basic helix-loop-helix protein 32(bHLHe32);MITF-A;WS2A;MI;CMM8; Microphthalmia-associated transcription factor;WS2

Biology Area: HLH / Leucine Zipper,HLH,HLH / Leucine Zipper,Mast Cells

Research Background

The protein encoded by this gene is a transcription factor that contains both basic helix-loop-helix and leucine zipper structural features. The encoded protein regulates melanocyte development and is responsible for pigment cell-specific transcription of the melanogenesis enzyme genes. Heterozygous mutations in the this gene cause auditory-pigmentary syndromes, such as Waardenburg syndrome type 2 and Tietz syndrome. [provided by RefSeq, Aug 2017]

Inhibitor · Natural Compounds · Compound Libraries · Recombinant Proteins

This product is for Research Use Only · Not for Human or Veterinary or Therapeutic Use

Tel:781-999-4286 E_mail:info@targetmol.com Address:34 Washington Street,Wellesley Hills,MA 02481