

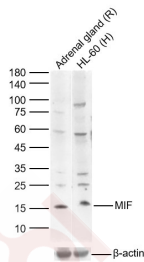
## Anti-MIF Polyclonal Antibody

### Product Details

Ig Type: IgG  
Reactivity: Human,Rat (predicted:Mouse,Dog,Pig,Cow)  
Molecular Weight: Theoretical: 12 kDa. Actual: 12 kDa.  
Purification: Protein A purified

### Applications

Sample:  
Lane 1: Rat Adrenal gland Lysates  
Lane 2: Human HL-60 cell Lysates  
Verified Activity: Primary: Anti-MIF at 1/1000 dilution  
Secondary: IRDye800CW Goat Anti-Rabbit IgG at 1/20000 dilution  
Predicted band size: 12 kDa  
Observed band size: 12 kDa



Application: IF,IHC-Fr,WB  
Recommended WB: 1:500-2000; IHC-Fr: 1:100-500; IF: 1:100-500

### Properties

Stability & Storage: Store at -20°C or -80°C for 12 months. Avoid repeated freeze-thaw cycles.  
Shipping: Shipping with blue ice.

### Antigen Details

Immunogen: KLH conjugated synthetic peptide: human MIPF  
Antigen Species: Human  
Gene ID: 4282  
Uniprot ID: P14174  
Synonyms: macrophage migration inhibitory factor (glycosylation-inhibiting factor);MMIF;GIF;GLIF  
Biology Area: Macrophage / Inflamm.

### Research Background

This gene encodes a lymphokine involved in cell-mediated immunity, immunoregulation, and inflammation. It plays a role in the regulation of macrophage function in host defense through the suppression of anti-inflammatory

## A DRUG SCREENING EXPERT

---

effects of glucocorticoids. This lymphokine and the JAB1 protein form a complex in the cytosol near the peripheral plasma membrane, which may indicate an additional role in integrin signaling pathways. [provided by RefSeq, Jul 2008]

**Inhibitor · Natural Compounds · Compound Libraries · Recombinant Proteins**

This product is for Research Use Only · Not for Human or Veterinary or Therapeutic Use

Tel:781-999-4286 E\_mail:info@targetmol.com Address:34 Washington Street,Wellesley Hills,MA 02481