

## Anti-MICA Polyclonal Antibody

## Product Details

Ig Type:	IgG
Reactivity:	Human,Mouse
Molecular Weight:	Theoretical: 43 kDa. Actual: 60 kDa.
Purification:	Protein A purified

## Applications

1. Tissue/cell: human lung carcinoma; 4% Paraformaldehyde-fixed and paraffin-embedded; Antigen retrieval: citrate buffer (0.01M, pH6.0), Boiling bathing for 15 min; Block endogenous peroxidase by 3% Hydrogen peroxide for 30 min; Blocking buffer (normal goat serum) at 37°C for 20 min;

Incubation: Anti-MICA/MHC I a Polyclonal Antibody, Unconjugated (TMAB-01136) 1:200, overnight at 4°C, followed by conjugation to the secondary antibody and DAb staining.

2. Tissue/cell: mouse intestine tissue; 4% Paraformaldehyde-fixed and paraffin-embedded; Antigen retrieval: citrate buffer (0.01M, pH6.0), Boiling bathing for 15 min; Block endogenous peroxidase by 3% Hydrogen peroxide for 30 min; Blocking buffer (normal goat serum) at 37°C for 20 min;

Incubation: Anti-MICA/MHC I a Polyclonal Antibody, Unconjugated (TMAB-01136) 1:200, overnight at 4°C, followed by conjugation to the secondary antibody and DAb staining.

3. Tissue/cell: mouse lung tissue; 4% Paraformaldehyde-fixed and paraffin-embedded; Antigen retrieval: citrate buffer (0.01M, pH6.0), Boiling bathing for 15 min; Block endogenous peroxidase by 3% Hydrogen peroxide for 30 min; Blocking buffer (normal goat serum) at 37°C for 20 min;

Incubation: Anti-MICA/MHC I a Polyclonal Antibody, Unconjugated (TMAB-01136) 1:200, overnight at 4°C, followed by conjugation to the secondary antibody and DAb staining.

## Verified Activity:

4. Blank control (blue line): A431 (blue).

Primary Antibody (green line): Rabbit Anti-MICA antibody (TMAB-01136)

Dilution: 1 µg/10<sup>6</sup> cells;

Isotype Control Antibody (orange line): Rabbit IgG.

Secondary Antibody (white blue line): Goat anti-rabbit IgG-FITC

Dilution: 1 µg/test.

## Protocol

The cells were fixed with 2% paraformaldehyde (10 min), then permeabilized with 90% ice-cold methanol for 30 min on ice. Cells stained with Primary Antibody for 30 min at room temperature. The cells were then incubated in 1 X PBS/2% BSA/10% goat serum to block non-specific protein-protein interactions followed by the antibody for 15 min at room temperature. The secondary antibody used for 40 min at room temperature.

## 5. Sample:

Lane 1: Mouse Large intestine tissue lysates

Lane 2: Mouse Lung tissue lysates

Lane 3: Mouse Kidney tissue lysates

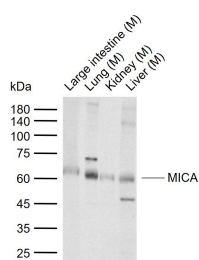
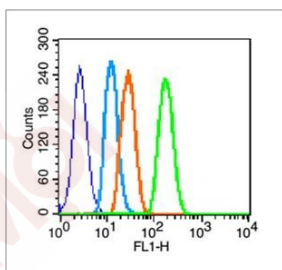
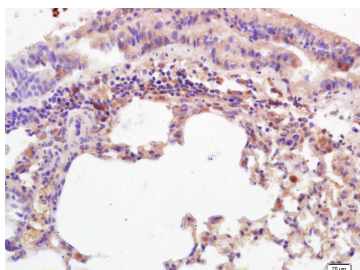
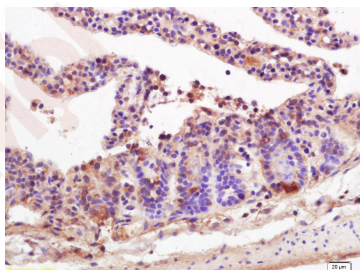
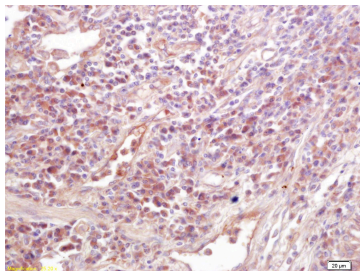
Lane 4: Mouse Liver tissue lysates

Primary: Anti-MICA (TMAB-01136) at 1/1000 dilution

Secondary: IRDye800CW Goat Anti-Rabbit IgG at 1/20000 dilution

Predicted band size: 43 kDa

Observed band size: 60 kDa



Application: FCM,IF,IHC-Fr,IHC-P,WB

Recommended WB: 1:500-2000; IHC-P: 1:100-500; IHC-Fr: 1:100-500; IF: 1:100-500; FCM: 1μg/Test

### Properties

Stability & Storage: Store at -20°C or -80°C for 12 months. Avoid repeated freeze-thaw cycles.

Shipping: Shipping with blue ice.

### Antigen Details

Immunogen:	KLH conjugated synthetic peptide: human MICA
Antigen Species:	Human
Gene ID:	100507436
Uniprot ID:	Q29983
Synonyms:	FLJ36918;MGC111087;MGC21250;DAMA-345G11.2;PERB11.1;MIC-A;MHC class I polypeptide-related sequence A;FLJ60820
Biology Area:	Class I,NK Cells

---

### Research Background

The MHC class I chain-related (MIC) proteins are related to the Major histocompatibility complex (MHC) class I proteins which are ubiquitously expressed and mediate the recognition of intracellular antigens by cytotoxic T cells. The MHC class I chain-related (MIC) proteins are recognized by NKG2D, a receptor on NK and T cells, and promote anti-tumor activity. MICA, a member of the MIC family, is widely expressed on many tumors, and it is the MICA/NKG2D interaction that is thought to stimulate the anti-tumor reactivity by T lymphocytes. MICA is present in virtually every tissue except the nervous system, suggesting that MIC protein expression may only be one component of the anti-tumor activity of the immune system.

**Inhibitor · Natural Compounds · Compound Libraries · Recombinant Proteins**

This product is for Research Use Only · Not for Human or Veterinary or Therapeutic Use

Tel:781-999-4286 E\_mail:info@targetmol.com Address:34 Washington Street,Wellesley Hills,MA 02481