

## Anti-MHC Class II Polyclonal Antibody 2

### Product Details

Ig Type:	IgG
Reactivity:	Human,Mouse (predicted:Rat)
Molecular Weight:	Theoretical: 27 kDa. Actual: 50 kDa.
Purification:	Protein A purified

### Applications

1. Protein: mouse lung lysates at 30 µg;  
Primary: Anti-MHC Class II (TMAB-01135) at 1:200;  
Secondary: HRP conjugated Goat Anti-Rabbit IgG (secondary antibody) at 1: 3000;  
ECL excited the fluorescence;  
Predicted band size: 27 kDa  
Observed band size: 30 kDa

2. Tissue/cell: human lung carcinoma; 4% Paraformaldehyde-fixed and paraffin-embedded;  
Antigen retrieval: citrate buffer (0.01M, pH6.0), Boiling bathing for 15 min; Block endogenous peroxidase by 3% Hydrogen peroxide for 30 min; Blocking buffer (normal goat serum) at 37°C for 20 min;

Verified Activity: Incubation: Anti-MHC Class II Polyclonal Antibody, Unconjugated (TMAB-01135) 1:200, overnight at 4°C, followed by conjugation to the secondary antibody and DAb staining.

3. Sample:

Lane 1: Lung (Mouse) Lysate at 40 µg

Lane 2: Cerebrum (Mouse) Lysate at 40 µg

Lane 3: LymphNode (Mouse) Lysate at 40 µg

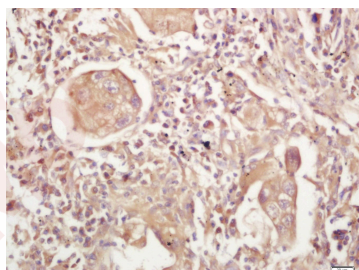
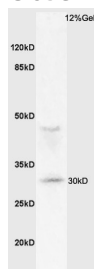
Lane 4: Spleen (Mouse) Lysate at 40 µg

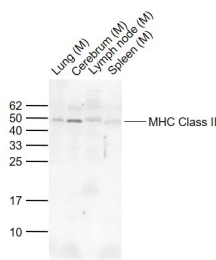
Primary: Anti-MHC Class II (TMAB-01135) at 1/1000 dilution

Secondary: IRDye800CW Goat Anti-Rabbit IgG at 1/20000 dilution

Predicted band size: 29/50 kDa

Observed band size: 50 kDa





Application: IF,IHC-Fr,IHC-P,WB

Recommended WB: 1:500-2000; IHC-P: 1:100-500; IHC-Fr: 1:100-500; IF: 1:100-500

## Properties

Stability & Storage: Store at -20°C or -80°C for 12 months. Avoid repeated freeze-thaw cycles.

Shipping: Shipping with blue ice.

## Antigen Details

Immunogen: KLH conjugated synthetic peptide: human HLA class II histocompatibility antigen DM beta chain

Antigen Species: Human

Gene ID: 3109

Uniprot ID: P28068

Synonyms: HLA DMB;DPB1;HLA class II histocompatibility antigen, DM beta chain;HLA-DMβ;HLADM;Major histocompatibility complex class II DP beta 1;HLA class II histocompatibility antigen DM beta chain;HLA-DMB;MHC class II antigen DMB;DRB;RING6;HLADP1B;DMA;HLA DPB1;MHC2;MHC DPB1;RING7;DPB 1;DP beta 1;DMB;Major histocompatibility complex class II

Biology Area: Class II

## Research Background

HLA-DMB belongs to the HLA class II beta chain paralogues. This class II molecule is a heterodimer consisting of an alpha (DMA) and a beta (DMB) chain, both anchored in the membrane. It is located in intracellular vesicles. DM plays a central role in the peptide loading of MHC class II molecules by helping to release the CLIP (class II-associated invariant chain peptide) molecule from the peptide binding site. Class II molecules are expressed in antigen presenting cells (APC: B lymphocytes, dendritic cells, macrophages). The beta chain is approximately 26-28 kDa and its gene contains 6 exons. Exon one encodes the leader peptide, exons 2 and 3 encode the two extracellular domains, exon 4 encodes the transmembrane domain and exon 5 encodes the cytoplasmic tail. [provided by RefSeq, Jul 2008]

**Inhibitor · Natural Compounds · Compound Libraries · Recombinant Proteins**

This product is for Research Use Only · Not for Human or Veterinary or Therapeutic Use

Tel:781-999-4286 E\_mail:info@targetmol.com Address:34 Washington Street,Wellesley Hills,MA 02481