

Anti-MFSD2A Polyclonal Antibody

Product Details

Ig Type: IgG
Reactivity: Human, Mouse, Rat (predicted: Chicken, Dog, Pig, Cow, Horse, Rabbit)
Molecular Weight: Theoretical: 60 kDa. Actual: 58 kDa.
Purification: Protein A purified

Applications

1. Tissue/cell: rat brain tissue; 4% Paraformaldehyde-fixed and paraffin-embedded; Antigen retrieval: citrate buffer (0.01M, pH6.0), Boiling bathing for 15 min; Block endogenous peroxidase by 3% Hydrogen peroxide for 30 min; Blocking buffer (normal goat serum) at 37°C for 20 min; Incubation: Anti-MFSD2A Polyclonal Antibody, Unconjugated (TMAB-01133) 1:200, overnight at 4°C, followed by conjugation to the secondary antibody and DAB staining.

2. Blank control: Molt-4. Primary Antibody (green line): Rabbit Anti-MFSD2A antibody
Dilution: 0.2 µg/10⁶ cells;
Isotype Control Antibody (orange line): Rabbit IgG.

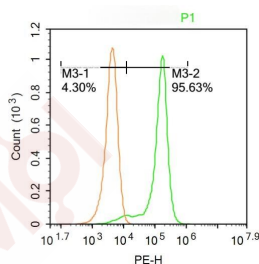
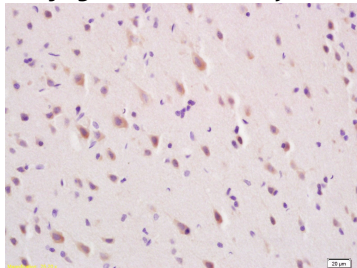
Verified Activity:

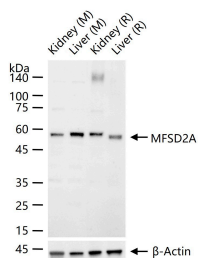
Secondary Antibody: Goat anti-rabbit IgG-PE
Dilution: 0.2 µg/test.

Protocol

The cells were fixed with 4% PFA (10 min at room temperature) and then permeabilized with 20% PBST for 20 min at -20°C. The cells were then incubated in 5% BSA to block non-specific protein-protein interactions for 30 min at room temperature. Cells stained with Primary Antibody for 30 min at room temperature. The secondary antibody used for 40 min at room temperature.

3. 25 µg total protein per Lane of various lysates probed with MFSD2A polyclonal antibody, unconjugated (TMAB-01133) at 1:1000 dilution and 4°C overnight incubation. Followed by conjugated secondary antibody incubation at RT for 60 min.





Application: FCM,IF,IHC-Fr,IHC-P,WB

Recommended WB: 1:500-2000; IHC-P: 1:100-500; IHC-Fr: 1:100-500; IF: 1:100-500; FCM: 0.2ug/test

Properties

Stability & Storage: Store at -20°C or -80°C for 12 months. Avoid repeated freeze-thaw cycles.

Shipping: Shipping with blue ice.

Antigen Details

Immunogen: KLH conjugated synthetic peptide: human MFSD2A

Antigen Species: Human

Gene ID: 84879

Uniprot ID: Q8NA29

Synonyms: MFSD2A;MFS2A;Major facilitator superfamily domain containing 2;MFSD2;Major facilitator superfamily domain-containing protein 2A

Research Background

MFSD2 is a 543 amino acid multi-pass membrane protein of the endoplasmic reticulum that is involved in beta-adrenergic signaling during thermogenesis. Existing as three alternatively spliced isoforms, MFSD2 plays a role in G1 regulation and is encoded by a gene that maps to human chromosome 1p34.2. Human chromosome 1 spans 260 million base pairs, contains over 3,000 genes, comprises nearly 8% of the human genome and houses a large number of disease-associated genes, including those that are involved in familial adenomatous polyposis, Stickler syndrome, Parkinson's disease, Gaucher disease, schizophrenia and Usher syndrome.

Inhibitor · Natural Compounds · Compound Libraries · Recombinant Proteins

This product is for Research Use Only · Not for Human or Veterinary or Therapeutic Use

Tel:781-999-4286 E_mail:info@targetmol.com Address:34 Washington Street,Wellesley Hills,MA 02481