

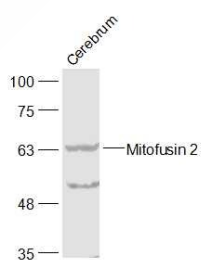
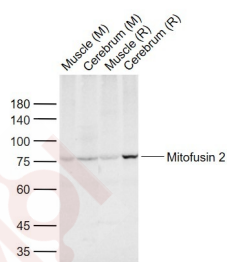
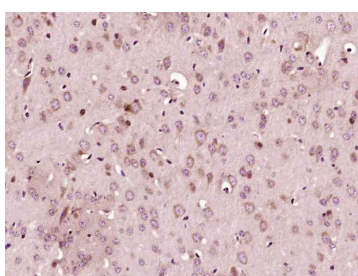
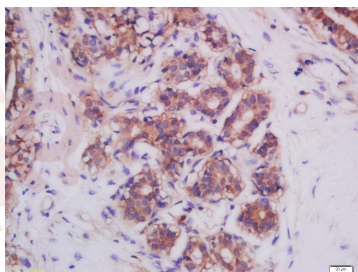
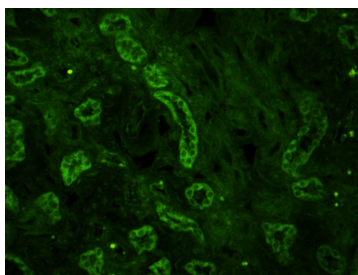
Anti-MFN2 Polyclonal Antibody

Product Details

Ig Type:	IgG
Reactivity:	Human,Mouse,Rat
Molecular Weight:	Theoretical: 83 kDa. Actual: 77 kDa.
Purification:	Protein A purified

Applications

1. Tissue/cell: human kidney tissue; 4% Paraformaldehyde-fixed and paraffin-embedded; Antigen retrieval: citrate buffer (0.01M, pH6.0), Boiling bathing for 15 min; Blocking buffer (normal goat serum) at 37°C for 20 min; Incubation: Anti-Mitofusin-2 Polyclonal Antibody, Unconjugated (TMAB-01132) 1:200, overnight at 4°C; The secondary antibody was Goat Anti-Rabbit IgG, FITC conjugated used at 1:200 dilution for 40 minutes at 37°C.
2. Tissue/cell: human breast cancer; 4% Paraformaldehyde-fixed and paraffin-embedded; Antigen retrieval: citrate buffer (0.01M, pH6.0), Boiling bathing for 15 min; Block endogenous peroxidase by 3% Hydrogen peroxide for 30 min; Blocking buffer (normal goat serum) at 37°C for 20 min; Incubation: Anti-Mitofusin 2 Polyclonal Antibody, Unconjugated (TMAB-01132) 1:200, overnight at 4°C, followed by conjugation to the secondary antibody and DAB staining.
3. Paraformaldehyde-fixed, paraffin embedded (Mouse brain); Antigen retrieval by boiling in sodium citrate buffer (pH6.0) for 15 min; Block endogenous peroxidase by 3% hydrogen peroxide for 20 min; Blocking buffer (normal goat serum) at 37°C for 30 min; Antibody incubation with (Mitofusin 2) Polyclonal Antibody, Unconjugated (TMAB-01132) at 1:400 overnight at 4°C, followed by operating according to SP Kit (Rabbit) instructions and DAB staining.
- Verified Activity:
4. Sample:
 Lane 1: Mouse Muscle tissue lysates
 Lane 2: Mouse Cerebrum tissue lysates
 Lane 3: Rat Muscle tissue lysates
 Lane 4: Rat Cerebrum tissue lysates
 Primary: Anti-Mitofusin 2 (TMAB-01132) at 1/1000 dilution
 Secondary: IRDye800CW Goat Anti-Rabbit IgG at 1/20000 dilution
 Predicted band size: 83 kDa
 Observed band size: 77 kDa
5. Sample:
 Cerebrum (Mouse) Lysate at 40 µg
 Primary: Anti-Mitofusin 2 (TMAB-01132) at 1/1000 dilution
 Secondary: IRDye800CW Goat Anti-Rabbit IgG at 1/20000 dilution
 Predicted band size: 83 kDa
 Observed band size: 68 kDa



Application: ELISA, ICC/IF, WB

Recommended ELISA=1:5000-10000; ICC/IF=1:50-200; WB=1:500-2000

Properties

Stability & Storage: Store at -20°C or -80°C for 12 months. Avoid repeated freeze-thaw cycles.

Shipping: Shipping with blue ice.

Antigen Details

Immunogen:	KLH conjugated synthetic peptide: human Mitofusin 2
Antigen Species:	Human
Gene ID:	9927
Uniprot ID:	O95140
Biology Area:	Mitochondria,Mitochondrial,Neurodegenerative disease,Mitophagy fission and fusion, Mitochondrial markers,Apoptosis,Mitochondrial,Mitochondrial,Metabolism

Research Background

This gene encodes a mitochondrial membrane protein that participates in mitochondrial fusion and contributes to the maintenance and operation of the mitochondrial network. This protein is involved in the regulation of vascular smooth muscle cell proliferation, and it may play a role in the pathophysiology of obesity. Mutations in this gene cause Charcot-Marie-Tooth disease type 2A2, and hereditary motor and sensory neuropathy VI, which are both disorders of the peripheral nervous system. Defects in this gene have also been associated with early-onset stroke. Two transcript variants encoding the same protein have been identified. [provided by RefSeq, Jul 2008].

Inhibitor · Natural Compounds · Compound Libraries · Recombinant Proteins

This product is for Research Use Only · Not for Human or Veterinary or Therapeutic Use

Tel:781-999-4286 E_mail:info@targetmol.com Address:34 Washington Street,Wellesley Hills,MA 02481