

Anti-METTL3 Polyclonal Antibody

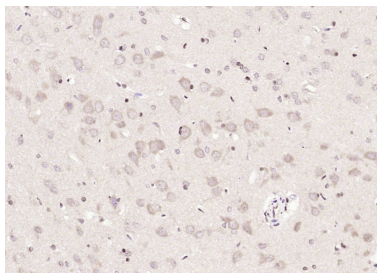
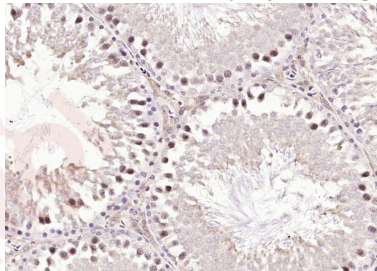
Product Details

Ig Type:	IgG
Reactivity:	Rat (predicted:Human,Mouse,Pig,Cow,Rabbit,Sheep)
Molecular Weight:	Theoretical: 64 kDa.
Purification:	Protein A purified

Applications

Verified Activity:

1. Paraformaldehyde-fixed, paraffin embedded (rat testis); Antigen retrieval by boiling in sodium citrate buffer (pH6.0) for 15 min; Block endogenous peroxidase by 3% hydrogen peroxide for 20 min; Blocking buffer (normal goat serum) at 37°C for 30 min; Antibody incubation with (METTL3) Polyclonal Antibody, Unconjugated (TMAB-01127) at 1:200 overnight at 4°C, followed by operating according to SP Kit (Rabbit) instructions and DAB staining.
2. Paraformaldehyde-fixed, paraffin embedded (rat brain); Antigen retrieval by boiling in sodium citrate buffer (pH6.0) for 15 min; Block endogenous peroxidase by 3% hydrogen peroxide for 20 min; Blocking buffer (normal goat serum) at 37°C for 30 min; Antibody incubation with (METTL3) Polyclonal Antibody, Unconjugated (TMAB-01127) at 1:200 overnight at 4°C, followed by operating according to SP Kit (Rabbit) instructions and DAB staining.



Application:	IF,IHC-Fr,IHC-P
Recommended	IHC-P: 1:100-500; IHC-Fr: 1:100-500; IF: 1:100-500

Properties

Stability & Storage:	Store at -20°C or -80°C for 12 months. Avoid repeated freeze-thaw cycles.
Shipping:	Shipping with blue ice.

Antigen Details

Immunogen: KLH conjugated synthetic peptide: human METTL3
Antigen Species: Human
Gene ID: 56339
Uniprot ID: Q86U44
Synonyms: N(6)-adenosine-methyltransferase 70 kDa subunit (MT-A70);MTA70;Methyltransferase-like protein 3 (hMETTL3);N(6)-adenosine-methyltransferase catalytic subunit METTL3;METTL3
Biology Area: DNA / Nucleotides,RNA Processing

Research Background

This gene encodes the 70 kDa subunit of MT-A which is part of N6-adenosine-methyltransferase. This enzyme is involved in the posttranscriptional methylation of internal adenosine residues in eukaryotic mRNAs, forming N6-methyladenosine. [provided by RefSeq, Jul 2008]

Inhibitor · Natural Compounds · Compound Libraries · Recombinant Proteins

This product is for Research Use Only· Not for Human or Veterinary or Therapeutic Use

Tel:781-999-4286 E_mail:info@targetmol.com Address:34 Washington Street,Wellesley Hills,MA 02481