

Anti-METTL14 Polyclonal Antibody

Product Details

Ig Type:	IgG
Reactivity:	Human,Mouse,Rat(predicted:Pig,Cow,Horse,Rabbit)
Molecular Weight:	Theoretical: 52 kDa. Actual: 65 kDa.
Purification:	Protein A purified

Applications

1. Tissue/cell: human laryngocarcinoma; 4% Paraformaldehyde-fixed and paraffin-embedded; Antigen retrieval: citrate buffer (0.01M, pH6.0), Boiling bathing for 15 min; Block endogenous peroxidase by 3% Hydrogen peroxide for 30 min; Blocking buffer (normal goat serum) at 37°C for 20 min;

Incubation: Anti-METTL14 Polyclonal Antibody, Unconjugated (TMAB-01126) 1:200, overnight at 4°C, followed by conjugation to the secondary antibody and DAb staining.

2. Tissue/cell: human colon cancer; 4% Paraformaldehyde-fixed and paraffin-embedded; Antigen retrieval: citrate buffer (0.01M, pH6.0), Boiling bathing for 15 min; Block endogenous peroxidase by 3% Hydrogen peroxide for 30 min; Blocking buffer (normal goat serum) at 37°C for 20 min;

Incubation: Anti-METTL14 Polyclonal Antibody, Unconjugated (TMAB-01126) 1:200, overnight at 4°C, followed by conjugation to the secondary antibody and DAb staining.

3. Sample:

Lane 1: Mouse Testis tissue lysates

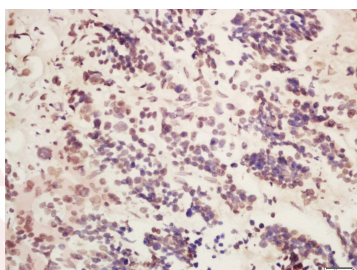
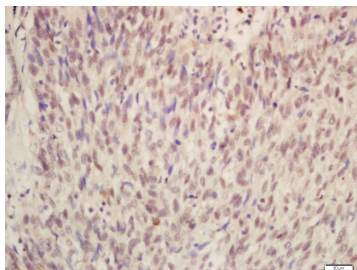
Lane 2: Rat Testis tissue lysates

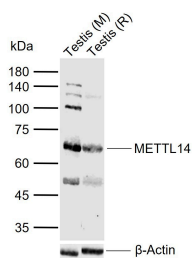
Primary: Anti-METTL14 (TMAB-01126) at 1/200 dilution

Secondary: IRDye800CW Goat Anti-Rabbit IgG at 1/20000 dilution

Predicted band size: 52 kDa

Observed band size: 65 kDa





Application: IF,IHC-Fr,IHC-P,WB

Recommended WB: 1:500-2000; IHC-P: 1:100-500; IHC-Fr: 1:100-500; IF: 1:100-500

Properties

Stability & Storage: Store at -20°C or -80°C for 12 months. Avoid repeated freeze-thaw cycles.

Shipping: Shipping with blue ice.

Antigen Details

Immunogen: KLH conjugated synthetic peptide: human METTL14

Antigen Species: Human

Gene ID: 57721

Uniprot ID: Q9HCE5

Synonyms: METTL14;KIAA1627;OTTHUMP00000219837;Methyltransferase-like protein 14;MET14

Biology Area: Other Antibodies

Inhibitor · Natural Compounds · Compound Libraries · Recombinant Proteins

This product is for Research Use Only · Not for Human or Veterinary or Therapeutic Use

Tel:781-999-4286 E_mail:info@targetmol.com Address:34 Washington Street,Wellesley Hills,MA 02481