

## Anti-MD2/LY96 Polyclonal Antibody

### Product Details

Ig Type:	IgG
Reactivity:	Human (predicted:Mouse)
Molecular Weight:	Theoretical: 16 kDa. Actual: 16 kDa.
Purification:	Protein A purified

### Applications

#### Sample:

Lane 1: Human U87MG cell lysates

Lane 2: Human HUVEC cell lysates

Lane 3: Human U251 cell lysates

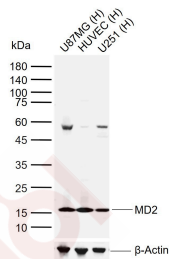
#### Verified Activity:

Primary: Anti-MD2 (TMAB-01122) at 1/1000 dilution

Secondary: IRDye800CW Goat Anti-Rabbit IgG at 1/20000 dilution

Predicted band size: 16 kDa

Observed band size: 16 kDa



Application:	ELISA,WB
Recommended	ELISA=1:5000-10000; WB=1:500-2000

### Properties

Stability & Storage:	Store at -20°C or -80°C for 12 months. Avoid repeated freeze-thaw cycles.
Shipping:	Shipping with blue ice.

### Antigen Details

Immunogen:	KLH conjugated synthetic peptide: human LY-96
Antigen Species:	Human
Gene ID:	23643
Uniprot ID:	Q9Y6Y9
Synonyms:	MD-2;LY96;Ly-96;ESOP1;ESOP-1;Lymphocyte antigen 96

### Research Background

MD2 cooperates with TLR4 in the innate immune response to bacterial lipopolysaccharide (LPS), and with TLR2 in the response to cell wall components from Gram-positive and Gram-negative bacteria. Enhances TLR4-dependent

activation of NF-kappa-B. Cells expressing both MD2 and TLR4, but not TLR4 alone, respond to LPS.

**Inhibitor · Natural Compounds · Compound Libraries · Recombinant Proteins**

This product is for Research Use Only · Not for Human or Veterinary or Therapeutic Use

Tel:781-999-4286 E\_mail:info@targetmol.com Address:34 Washington Street,Wellesley Hills,MA 02481