

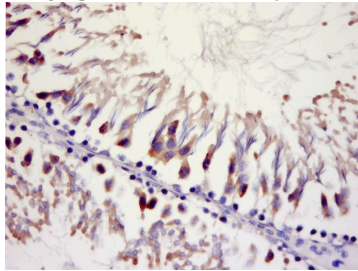
Anti-MCU Polyclonal Antibody

Product Details

Ig Type:	IgG
Reactivity:	Mouse,Rat (predicted:Human,Dog,Pig,Cow,Horse,Rabbit,Sheep)
Molecular Weight:	Theoretical: 40 kDa. Actual: 42 kDa.
Purification:	Protein A purified

Applications

Verified Activity: Paraformaldehyde-fixed, paraffin embedded (rat testis); Antigen retrieval by boiling in sodium citrate buffer (pH6.0) for 15 min; Block endogenous peroxidase by 3% hydrogen peroxide for 20 min; Blocking buffer (normal goat serum) at 37°C for 30 min; Antibody incubation with (MCU) Polyclonal Antibody, Unconjugated (TMAB-01121) at 1:500 overnight at 4°C, followed by a conjugated secondary for 20 min and DAB staining.



Application:	ELISA,ICC/IF,IF,IHC-Fr,IHC-P,WB
Recommended	WB: 1:500-2000; IHC-P: 1:100-500; IHC-Fr: 1:100-500; ICC/IF: 1:100-500; IF: 1:100-500; ELISA: 1:5000-10000

Properties

Stability & Storage:	Store at -20°C or -80°C for 12 months. Avoid repeated freeze-thaw cycles.
Shipping:	Shipping with blue ice.

Antigen Details

Immunogen:	KLH conjugated synthetic peptide: human MCU
Antigen Species:	Human
Gene ID:	90550
Uniprot ID:	Q8NE86
Synonyms:	Coiled-coil domain-containing protein 109A;Mitochondrial Calcium Uniporter;Ccdc109a; C10orf42
Biology Area:	Cardiac metabolism,Mitochondrial markers

Research Background

This gene encodes a calcium transporter that localizes to the mitochondrial inner membrane. The encoded protein interacts with mitochondrial calcium uptake 1. Alternative splicing results in multiple transcript variants. [provided by RefSeq, Jul 2012]

Inhibitor · Natural Compounds · Compound Libraries · Recombinant Proteins

This product is for Research Use Only · Not for Human or Veterinary or Therapeutic Use

Tel:781-999-4286 E_mail:info@targetmol.com Address:34 Washington Street,Wellesley Hills,MA 02481