

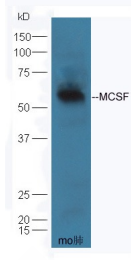
Anti-M-CSF/CSF1 Polyclonal Antibody

Product Details

Ig Type:	IgG
Reactivity:	Mouse (predicted:Human,Rat,Dog,Pig,Cow,Rabbit)
Molecular Weight:	Theoretical: 57 kDa. Actual: 57 kDa.
Purification:	Protein A purified

Applications

Verified Activity:	Sample: Lung (Mouse) Lysate at 40 µg
	Primary: Anti-MCSF (TMAB-01120) at 1/300 dilution
	Secondary: HRP conjugated Goat-Anti-rabbit IgG (secondary antibody) at 1/5000 dilution
	Predicted band size: 57 kDa Observed band size: 57 kDa



Application:	WB
Recommended	WB: 1:500-2000

Properties

Stability & Storage:	Store at -20°C or -80°C for 12 months. Avoid repeated freeze-thaw cycles.
Shipping:	Shipping with blue ice.

Antigen Details

Immunogen:	KLH conjugated synthetic peptide: human MCSF/M-CSF
Antigen Species:	Human
Gene ID:	1435
Uniprot ID:	P09603
Synonyms:	MGC31930;CSF1;M-CSF;MCSF;CSF-1;Lanimostim
Biology Area:	Inflammatory mediators,CSFs,Cytokines and cytokine receptors ELISA kits

Research Background

Four distinct colony-stimulating factors (CSFs) that promote survival, proliferation and differentiation of bone marrow precursor cells have been well characterized: granulocyte macrophage CSF (GMCSF), granulocyte CSF (GCSF), macrophage CSF (MCSF), and Interleukin-3 (IL-3, Multi CSF). Both GMCSF and IL-3 are multipotential growth factors, stimulating proliferation of progenitor cells from more than one hematopoietic lineage. In contrast, GCSF

and MCSF are lineage restricted hematopoietic growth factors, stimulating final mitotic divisions and the terminal cellular maturation of the partially differentiated hematopoietic progenitors.

Macrophage CSF, also known as CSF1, is produced by monocytes, fibroblasts and endothelial cells. It stimulates the formation of macrophage colonies, enhances antibody-dependent, cell-mediated cytotoxicity by monocytes and macrophages, and inhibits bone resorption by osteoclasts. Natural human MCSF is a dimeric glycoprotein of 70-90 kD molecular weight, existing in multiple glycosylation forms. It binds to a 165 kD glycoprotein of the receptor tyrosine kinase subclass III, a family that includes the receptors for platelet derived growth factor (PDGF) and stem cell factor (SCF).

Inhibitor · Natural Compounds · Compound Libraries · Recombinant Proteins

This product is for Research Use Only · Not for Human or Veterinary or Therapeutic Use

Tel:781-999-4286 E_mail:info@targetmol.com Address:34 Washington Street,Wellesley Hills,MA 02481