

Anti-MCP-1/CCL2 Polyclonal Antibody 2

Product Details

Ig Type: IgG
Reactivity: Mouse,Rat (predicted:Human)
Molecular Weight: Theoretical: 11 kDa. Actual: 11 kDa.
Purification: Protein A purified

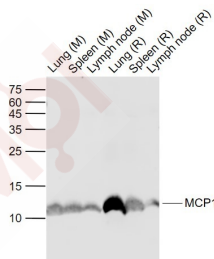
Applications

Sample:

Lane 1: Lung (Mouse) Lysate at 40 μ g
Lane 2: Spleen (Mouse) Lysate at 40 μ g
Lane 3: LymphNode (Mouse) Lysate at 40 μ g
Lane 4: Lung (Rat) Lysate at 40 μ g

Verified Activity:

Lane 5: Spleen (Rat) Lysate at 40 μ g
Lane 6: LymphNode (Rat) Lysate at 40 μ g
Primary: Anti-MCP1 (TMAB-01116) at 1/1000 dilution
Secondary: IRDye800CW Goat Anti-Rabbit IgG at 1/20000 dilution
Predicted band size: 11 kDa
Observed band size: 11 kDa



Application: ELISA,WB
Recommended WB: 1:500-2000; ELISA: 1:5000-10000

Properties

Stability & Storage: Store at -20°C or -80°C for 12 months. Avoid repeated freeze-thaw cycles.
Shipping: Shipping with blue ice.

Antigen Details

Immunogen:	KLH conjugated synthetic peptide: human MCP-1
Antigen Species:	Human
Gene ID:	6347
Uniprot ID:	P13500
Synonyms:	GDCF-2;CCL2;MCP-1;HC11;SMC-CF;MCAF;C-C motif chemokine 2;MCP1;HSMCR30;SCYA2
Biology Area:	Response to hypoxia,Chemokines,Alpha Chemokines (CXC),Hypoxia,Heart disease

Research Background

Chemotactic factor that attracts monocytes and basophils but not neutrophils or eosinophils. Augments monocyte anti-tumor activity. Has been implicated in the pathogenesis of diseases characterized by monocytic infiltrates, like psoriasis, rheumatoid arthritis or atherosclerosis. May be involved in the recruitment of monocytes into the arterial wall during the disease process of atherosclerosis. Monomer or homodimer; in equilibrium. Binds to CCR2 and CCR4. Is tethered on endothelial cells by glycosaminoglycan (GAG) side chains of proteoglycans. Processing at the N-terminus can regulate receptor and targetcell selectivity. Deletion of the N-terminal residue converts it from an activator of basophil to an eosinophil chemoattractant. Genetic variations in CCL2 determine Mycobacterium tuberculosis susceptibility Belongs to the intercrine beta (chemokine CC) family. The MCP-1(the monocyte chemotactic protein1) has many pits that regulates the function toward sex to turn to record the factor, it can induce to have relation with inflammation with the immunity various genes turn to record.The immunity MCP-1 set turns the male signal to mainly locate the afterbirth syrup inside.

Inhibitor · Natural Compounds · Compound Libraries · Recombinant Proteins

This product is for Research Use Only · Not for Human or Veterinary or Therapeutic Use

Tel:781-999-4286 E_mail:info@targetmol.com Address:34 Washington Street,Wellesley Hills,MA 02481