

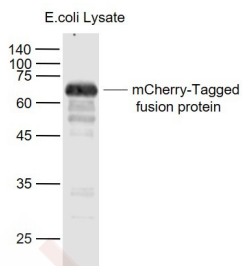
## Anti-mCherry Polyclonal Antibody

## Product Details

Ig Type:	IgG
Reactivity:	Species independent
Molecular Weight:	Actual: 70 kDa.
Purification:	Protein A purified

## Applications

Verified Activity:	Sample:
	Lane 1: mCherry-tagged fusion protein Overexpression E.coli Lysate at 4 µg
	Primary: Anti-mCherry-Tag (TMAB-01114) at 1/1000 dilution
	Secondary: IRDye800CW Goat Anti-Rabbit IgG at 1/20000 dilution
	Predicted band size: 70 kDa
	Observed band size: 70 kDa



Application:	ELISA,FCM,ICC/IF,IF,IHC-Fr,IHC-P,WB
Recommended	ELISA=1:1000-5000; FCM=1 µg/Test; ICC/IF=1:100-500; IF=1:200-1000; IHC-Fr=1:200-1000; IHC-P=1:200-1000; WB=1:1000-5000

## Properties

Stability & Storage:	Store at -20°C or -80°C for 12 months. Avoid repeated freeze-thaw cycles.
Shipping:	Shipping with blue ice.

## Antigen Details

Immunogen:	Recombinant Protein: mCherry protein
Synonyms:	monomeric cherry red fluorescent protein
Biology Area:	Fluorescent ligands

## Research Background

Fluorescent proteins have become a useful and ubiquitous tool for making chimeric proteins, where they function as a fluorescent protein tag. Typically they tolerate N- and C-terminal fusion to a broad variety of proteins. They have been expressed in most known cell types and are used as a noninvasive fluorescent marker in living cells and organisms. They enable a wide range of applications where they have functioned as a cell lineage tracer, reporter of gene expression, or as a measure of protein-protein interactions. Red Fluorescent Protein (RFP) is a versatile biological marker for monitoring physiological processes, visualizing protein localization, and detecting transgenic expression in vivo. RFP can be excited by the 488 nm or 532 nm laser line and is optimally detected at 588 nm.

**Inhibitor · Natural Compounds · Compound Libraries · Recombinant Proteins**

This product is for Research Use Only · Not for Human or Veterinary or Therapeutic Use

Tel:781-999-4286 E\_mail:info@targetmol.com Address:34 Washington Street,Wellesley Hills,MA 02481