

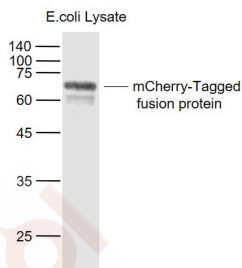
Anti-mCherry Antibody (5I534)

Product Details

Ig Type:	IgG1
Reactivity:	Species independent
Molecular Weight:	Actual: 70 kDa.
Clone:	5I534
Purification:	Protein G purified

Applications

Verified Activity:	Sample:
	Lane 1: mCherry-tagged fusion protein Overexpression E.coli Lysate at 4 μ g
	Primary: Anti-mCherry-Tag (TMAB-01113) at 1/1000 dilution
	Secondary: IRDye800CW Goat Anti-Mouse IgG at 1/20000 dilution
	Predicted band size: 70 kDa
	Observed band size: 70 kDa



Application:	WB,ELISA,IHC-P,IHC-F,IF,ICC/IF,FCM,IP
Recommended	WB=1:1000-5000,ELISA=1:1000-5000,IHC-P=1:200-1000,IHC-F=1:200-1000,IF=1:200-1000,ICC/IF=1:100-500,FCM=1ug/Test,IP=1:50-200

Properties

Stability & Storage:	Store at -20°C or -80°C for 12 months. Avoid repeated freeze-thaw cycles.
Shipping:	Shipping with blue ice.

Antigen Details

Immunogen:	Recombinant Protein: Protein mCherry
Synonyms:	monomeric cherry red fluorescent protein
Biology Area:	Fluorescent ligands

Research Background

Fluorescent proteins have become a useful and ubiquitous tool for making chimeric proteins, where they function as a fluorescent protein tag. Typically they tolerate N- and C-terminal fusion to a broad variety of proteins. They have been expressed in most known cell types and are used as a noninvasive fluorescent marker in living cells and organisms. They enable a wide range of applications where they have functioned as a cell lineage tracer, reporter of gene expression, or as a measure of protein-protein interactions. Red Fluorescent Protein (RFP) is a versatile

A DRUG SCREENING EXPERT

biological marker for monitoring physiological processes, visualizing protein localization, and detecting transgenic expression in vivo. RFP can be excited by the 488 nm or 532 nm laser line and is optimally detected at 588 nm.

Inhibitor · Natural Compounds · Compound Libraries · Recombinant Proteins

This product is for Research Use Only · Not for Human or Veterinary or Therapeutic Use

Tel:781-999-4286 E_mail:info@targetmol.com Address:34 Washington Street,Wellesley Hills,MA 02481