

## Anti-MC1R Polyclonal Antibody

### Product Details

Ig Type:	IgG
Reactivity:	Human (predicted:Mouse,Rat)
Molecular Weight:	Theoretical: 35 kDa. Actual: 35 kDa.
Purification:	Protein A purified

### Applications

1. Tissue/cell: human melanoma; 4% Paraformaldehyde-fixed and paraffin-embedded; Antigen retrieval: citrate buffer (0.01M, pH6.0), Boiling bathing for 15 min; Block endogenous peroxidase by 3% Hydrogen peroxide for 30 min; Blocking buffer (normal goat serum) at 37°C for 20 min; Incubation: Anti-MSHR Polyclonal Antibody, Unconjugated (TMAB-01112) 1:200, overnight at 4° C, followed by conjugation to the secondary antibody and DAb staining.
2. Tissue/cell: human melanoma; 4% Paraformaldehyde-fixed and paraffin-embedded; Antigen retrieval: citrate buffer (0.01M, pH6.0), Boiling bathing for 15 min; Block endogenous peroxidase by 3% Hydrogen peroxide for 30 min; Blocking buffer (normal goat serum) at 37°C for 20 min; Incubation: Anti-MSHR Polyclonal Antibody, Unconjugated (TMAB-01112) 1:200, overnight at 4° C, followed by conjugation to the secondary antibody and DAb staining.
3. Blank control: 293t (blue). Primary Antibody: Rabbit Anti-MC1 Receptor/AF488 Conjugated antibody (TMAB-01112-AF488), Dilution: 1 µg in 100 µL 1X PBS containing 0.5% BSA; Isotype Control Antibody: Rabbit IgG/AF488 (orange), used under the same conditions.

#### Protocol

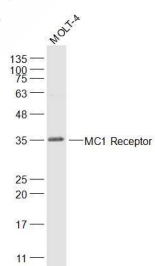
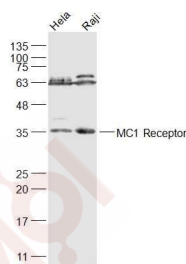
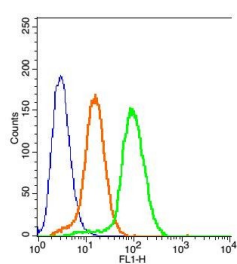
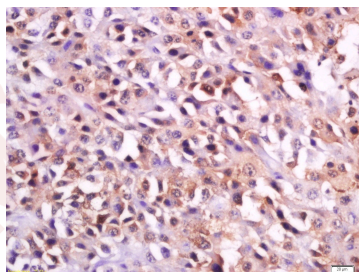
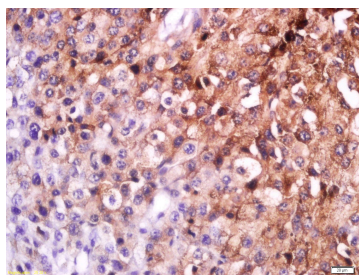
Verified Activity: The cells were fixed with 2% paraformaldehyde (10 min) and then permeabilized with ice-cold 90% methanol for 30 min on ice. The cells were washed twice with 1 X PBS. The cells were incubated in 1 X PBS containing 0.5% BSA + 10% goat serum (15 min) to block non-specific protein-protein interactions followed by the incubated with antibody (TMAB-01112-AF488, 1 µg/1x10<sup>6</sup> cells) for 30 min on ice.

#### 4. Sample:

Hela (Human) Cell Lysate at 30 µg  
 Raji (Human) Cell Lysate at 30 µg  
 Primary: Anti-MC1 Receptor (TMAB-01112) at 1/1000 dilution  
 Secondary: IRDye800CW Goat Anti-Rabbit IgG at 1/20000 dilution  
 Predicted band size: 35 kDa  
 Observed band size: 35 kDa

#### 5. Sample:

MOLT-4 (Human) Cell Lysate at 30 µg  
 Primary: Anti-MC1 Receptor (TMAB-01112) at 1/1000 dilution  
 Secondary: IRDye800CW Goat Anti-Rabbit IgG at 1/20000 dilution  
 Predicted band size: 35 kDa  
 Observed band size: 35 kDa



Application: FCM,IF,IHC-Fr,IHC-P,WB

Recommended WB: 1:500-2000; IHC-P: 1:100-500; IHC-Fr: 1:100-500; IF: 1:100-500; FCM: 1µg/Test

### Properties

Stability & Storage: Store at -20°C or -80°C for 12 months. Avoid repeated freeze-thaw cycles.

Shipping: Shipping with blue ice.

### Antigen Details

Immunogen:	KLH conjugated synthetic peptide: mouse MC1R
Antigen Species:	Mouse
Gene ID:	17199
Synonyms:	MSH-R;Melanocyte-stimulating hormone receptor;MSHR;MC1R;Melanocortin receptor 1 (MC1-R)
Biology Area:	Hormone biosynthesis,More GPCR

---

### Research Background

Enables melanocyte-stimulating hormone receptor activity. Involved in intracellular signal transduction; positive regulation of intracellular signal transduction; and positive regulation of transcription by RNA polymerase II. Acts upstream of or within melanin biosynthetic process; pigmentation; and sensory perception of pain. Predicted to be located in membrane. Predicted to be integral component of membrane. Predicted to be active in cytoplasm and plasma membrane. Is expressed in ductus deferens; epididymis; esophagus; and skin. Human ortholog(s) of this gene implicated in familial melanoma; major depressive disorder; melanoma; oculocutaneous albinism type II; and pigmentation disease. Orthologous to human MC1R (melanocortin 1 receptor). [provided by Alliance of Genome Resources, Nov 2021]

**Inhibitor · Natural Compounds · Compound Libraries · Recombinant Proteins**

This product is for Research Use Only · Not for Human or Veterinary or Therapeutic Use

Tel:781-999-4286 E\_mail:info@targetmol.com Address:34 Washington Street,Wellesley Hills,MA 02481