

Anti-MBP tag Antibody (8B845)

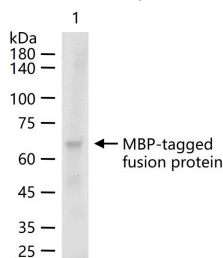
Product Details

Ig Type:	IgG
Reactivity:	Species independent
Molecular Weight:	Theoretical: 44 kDa. Actual: 70 kDa.
Clone:	8B845
Purification:	Protein A purified

Applications

Verified Activity:

100 ng rhC-jun-His-MBP protein per Lane probed with MBP tag monoclonal antibody respectively, unconjugated (TMAB-01111) at 1:10000 dilution and 4°C overnight incubation. Followed by corresponding conjugated secondary antibody incubation at RT for 60 min.



Application:	WB,ELISA,IHC-P,IHC-F,IF,ICC/IF,FCM,IP
Recommended	WB=1:1000-10000,ELISA=1:1000-5000,IHC-P=1:200-1000,IHC-F=1:200-1000,IF=1:200-1000,ICC/IF=1:100-500,FCM=1 ug/Test,IP=1:50-200

Properties

Stability & Storage:	Store at -20°C or -80°C for 12 months. Avoid repeated freeze-thaw cycles.
Shipping:	Shipping with blue ice.

Antigen Details

Immunogen:	Recombinant Protein: MBP Protein of Escherichia coli (strain K12)
Synonyms:	MBP;MMBP;MALE_ECOLI;Maltodextrin binding protein;Mal E;MalE;ECK4026;Maltose Binding Protein;Maltose ABC transporter periplasmic protein;JW3994;Periplasmic maltose binding protein;malJ;Maltose binding periplasmic protein;Maltose binding protein tag

Research Background

Protein tags are protein or peptide sequences located either on the C- or N- terminal of the target protein, which facilitates one or several of the following characteristics: solubility, detection, purification, localization and expression. Maltose binding protein(MBP) is the 370 amino acid product of the E.coli mal E gene. MBP is a useful affinity tag that can increase the expression level and solubility of the resulting tagged protein. The MBP tag also promotes proper folding of the attached protein. Plasmid vectors have been constructed utilizing the MBP domain that allow the synthesis of high levels of MBP-fusion proteins that can be purified in a one step procedure by affinity chromatography cross linked amylose resin. Once bound to amylose, the MBP protein can then be separated from the target protein by cleavage by coagulation Factor Xa at a specific four residue site. Alternatively, the intact fusion

A DRUG SCREENING EXPERT

protein can be specifically eluted from the resin by the addition of excess free maltose. Subsequent to elution, MBP fusion protein can be visualized either by Western blot analysis or immunoprecipitation using antibodies specific for the MBP-tag. An antibody to MBP can also be used to isolate or detect expression of the protein.

Inhibitor · Natural Compounds · Compound Libraries · Recombinant Proteins

This product is for Research Use Only · Not for Human or Veterinary or Therapeutic Use

Tel:781-999-4286 E_mail:info@targetmol.com Address:34 Washington Street,Wellesley Hills,MA 02481